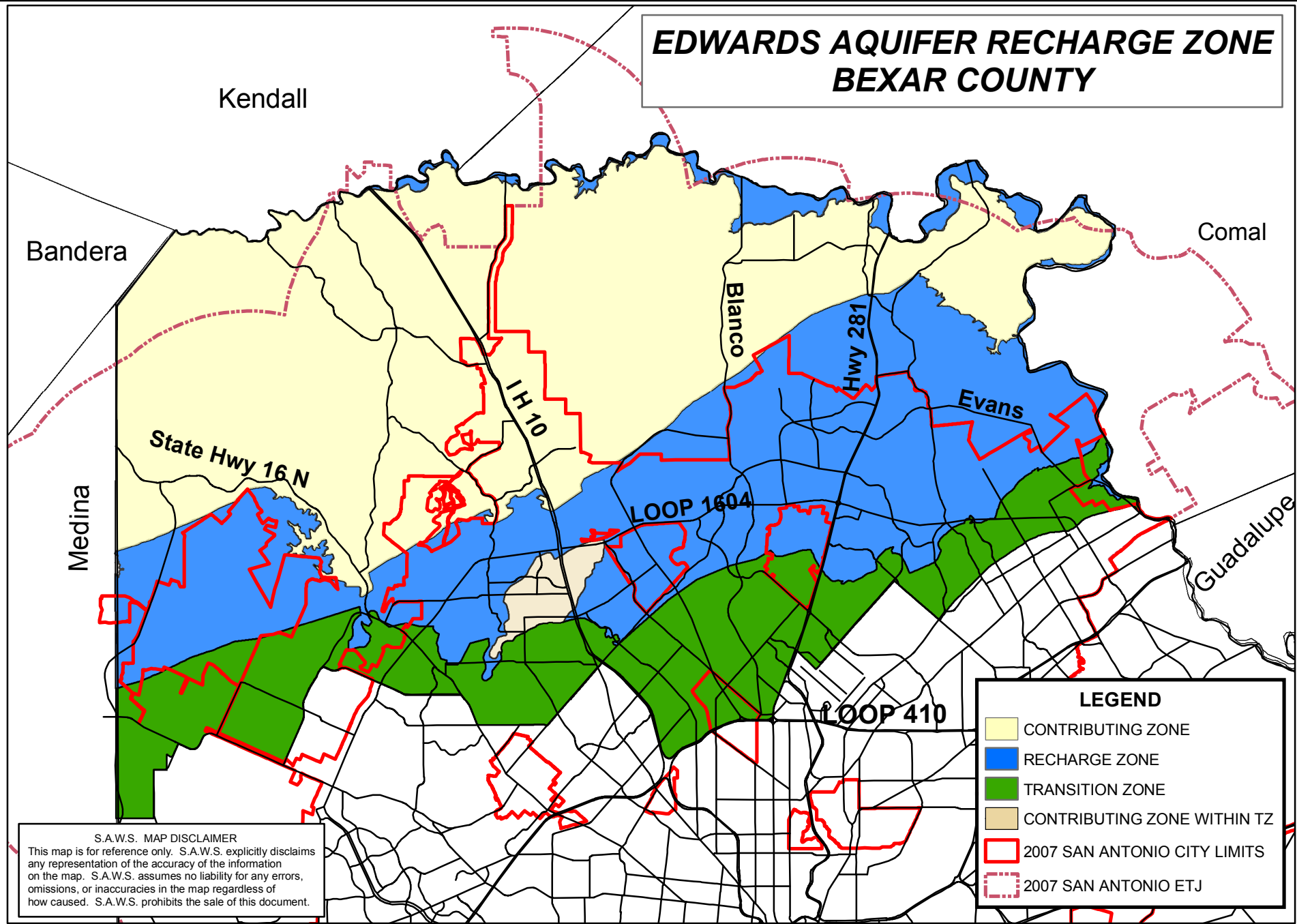


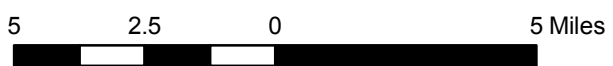
# EDWARDS AQUIFER RECHARGE ZONE BEXAR COUNTY



**S.A.W.S. MAP DISCLAIMER**  
 This map is for reference only. S.A.W.S. explicitly disclaims any representation of the accuracy of the information on the map. S.A.W.S. assumes no liability for any errors, omissions, or inaccuracies in the map regardless of how caused. S.A.W.S. prohibits the sale of this document.

**LEGEND**

- CONTRIBUTING ZONE
- RECHARGE ZONE
- TRANSITION ZONE
- CONTRIBUTING ZONE WITHIN TZ
- 2007 SAN ANTONIO CITY LIMITS
- 2007 SAN ANTONIO ETJ



**NOTE:** Texas Commission on Environmental Quality (TCEQ) is the official authority for the Edwards Aquifer Recharge Zone Boundary

Resource Protection & Compliance Dept.  
 Aquifer Protection & Evaluation Section  
 May, 2007  
 KES