

Production & Treatment Operations

# Wastewater Services

Robert Yrle

Director, Production & Treatment Operations



Rates Advisory Committee

January 8, 2008



Our water. Our future.

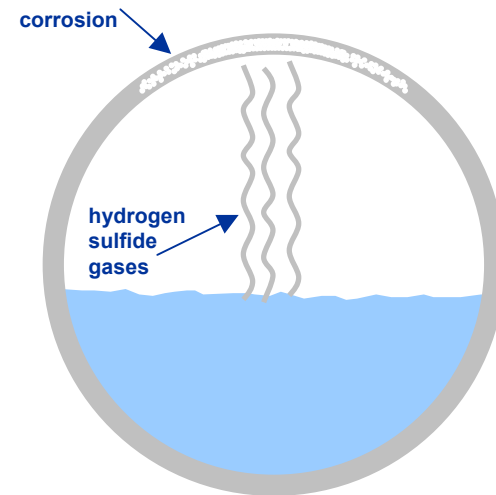
# SAWS' Wastewater Operations

- 387,616 customers
- 4,973 miles of wastewater mains
- 165 lift stations
- Three major water recycling centers
- Nation's largest direct recycled water distribution system



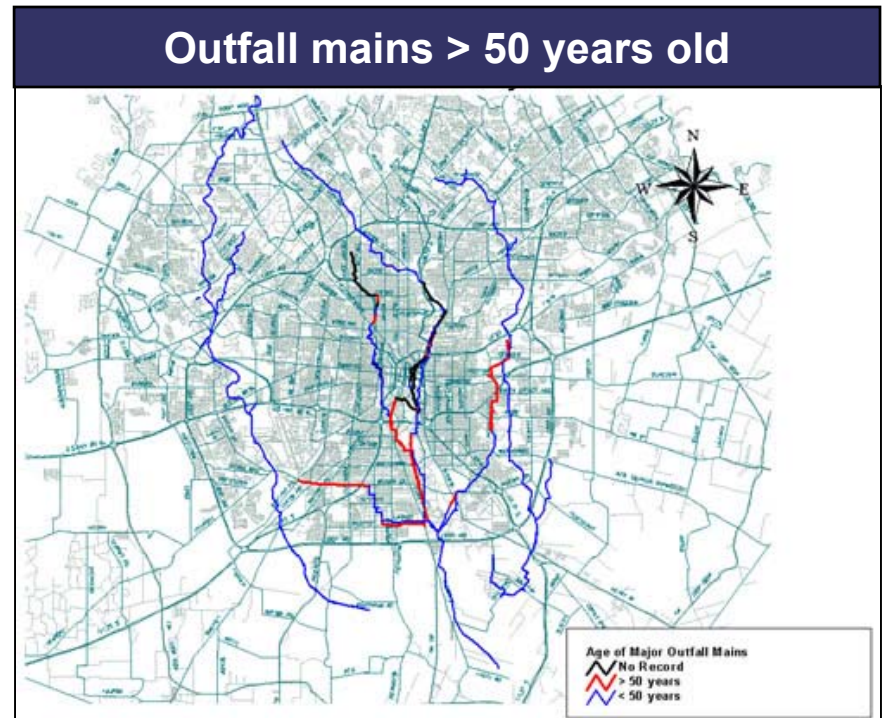
# Collection System

- San Antonio's soils and climate increase failures and increase design and operational challenges.
- Deteriorated sewer mains:
  - are environmental and safety hazards
  - are costly to repair
  - increase the volume of flow at the WRCs



# Collection System

- 23% of outfall mains have been assessed as being in either poor or critical structural condition
- In 2009, an additional \$2.5 million to additional line cleaning



# Current Treatment Facilities

- 187.5 mgd capacity
- 46 mgd reserve permit capacity



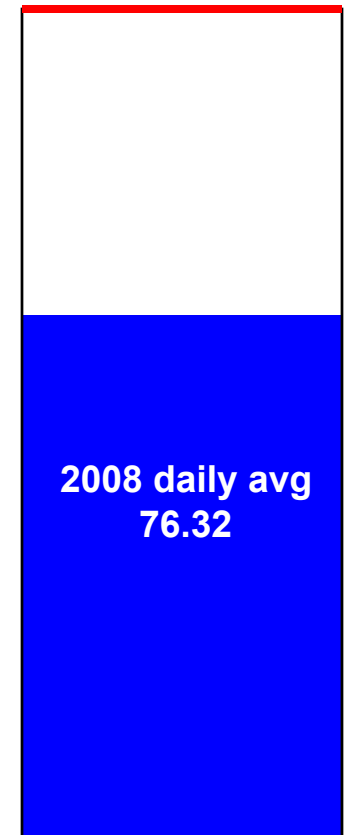
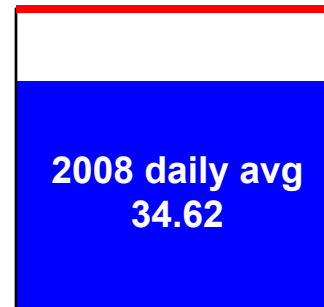
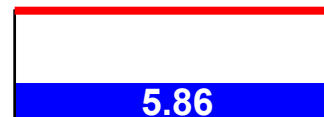
**Dos Rios**  
Permit capacity  
**125 mgd**



**Medio Creek**  
Permit capacity  
**16.5 mgd**



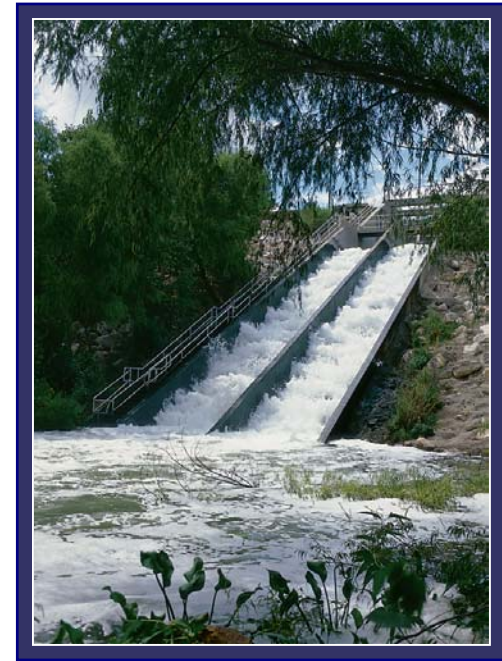
**Leon Creek**  
Permit capacity  
**46 mgd**



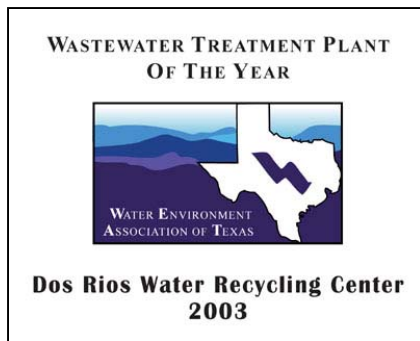
# Dos Rios

## Water Recycling Center

- SAWS' flagship 125 mgd facility
- New water quality laboratory
- Full fleet maintenance facility
- Sensitive receiving stream rated highly on environmental indexes



### "Best in Texas"



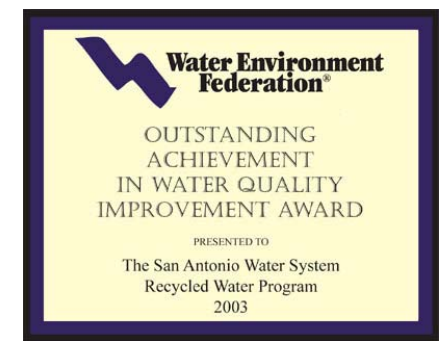
### "Best in Nation"



### Permit Compliance



### Environmental Stewardship



# Wastewater Operations

## Recent Highlights

- Eliminated Salado Creek WRC
- Completing expansion of Medio Creek WRC
- Expanded beneficial reuse programs
  - composting
  - gas to energy
- Acquired Castle Hills and Terrell Hills wastewater collection systems
- NACWA Operations Award for Biosolids Management
- International media coverage of gas-to-energy project



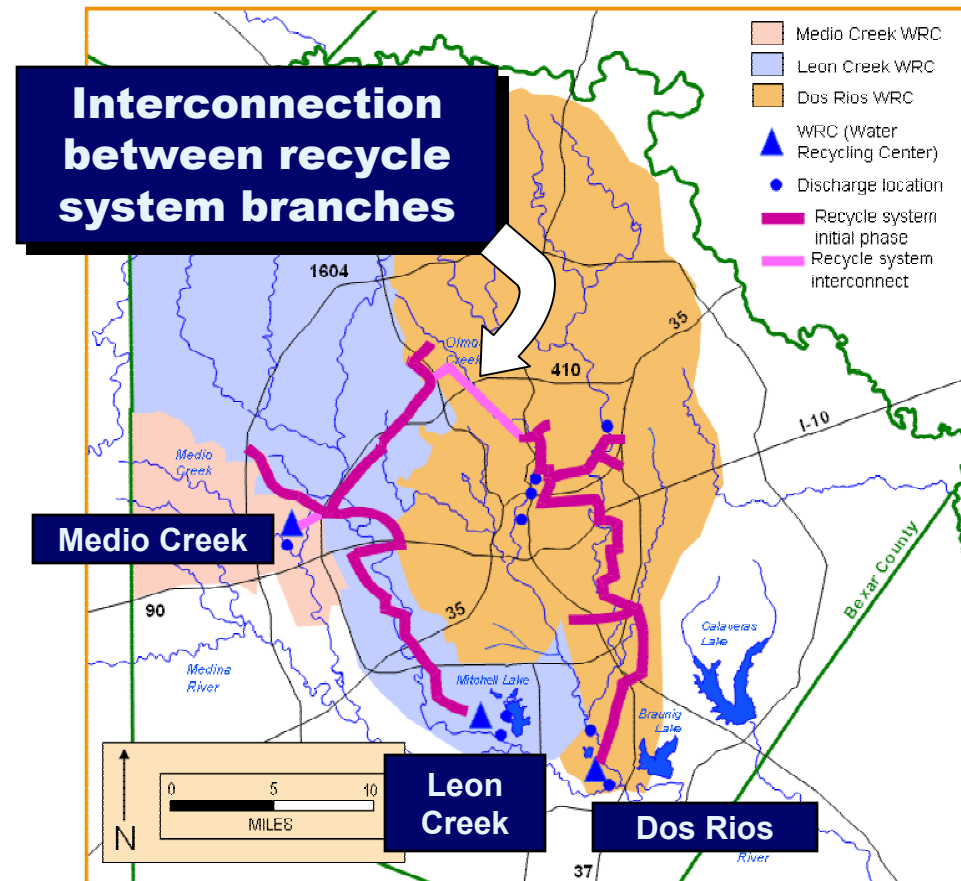
# Recycled Water / San Antonio River

- Nation's largest direct distribution system
- Improvements to San Antonio River Walk water quality
- Support of City South development initiatives
- Protective of downstream environment



# Other Issues and Challenges

- Leon Creek Improvements
- Dos Rios Improvements and Re-rating
- Medina Outfall
- Integrated Permit



Production & Treatment Operations

# Wastewater Services

Robert Yrle

Director, Production & Treatment Operations



Rates Advisory Committee

January 8, 2008



Our water. Our future.