

PLAN

Bolt Down Mechanism
See DD-808-10 Sheet 1 of 1

Cover latch is to be located on the opposite side of where the ladder is positioned.

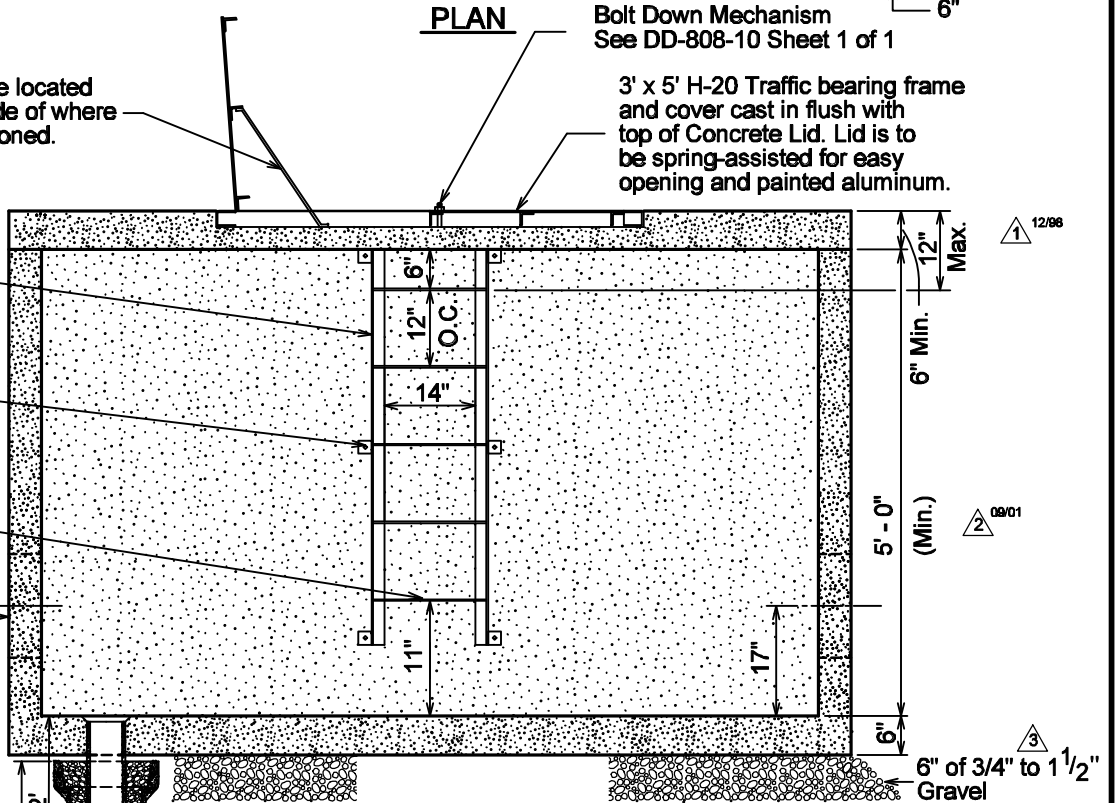
3' x 5' H-20 Traffic bearing frame and cover cast in flush with top of Concrete Lid. Lid is to be spring-assisted for easy opening and painted aluminum.

Ladder made of 2" x 2" x 1/4" Angle Steel

2" x 1/4" Steel ladder supports with 3/8" wedge anchor bolts

3" x 1/4" Steel Steps welded to ladder coated with skid resistant material

16" x 16" Opening at each end

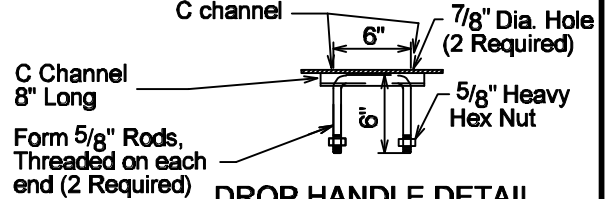


SECTION A-A

OPTION FOR DRAIN

- 1) Install 6" of 3/4" to 1 1/2" gravel under vault
- 2) Provide 6" PVC Sleeve through vault floor

Cut groove in Lid for Drop Handle to fit down into C channel



DROP HANDLE DETAIL

PROPERTY OF
SAN ANTONIO WATER SYSTEM
SAN ANTONIO, TEXAS

**CONCRETE VAULT FOR
10" DOUBLE DETECTOR
CHECK INSTALLATION**

APPROVED
AUGUST 1998

REVISED
3 DECEMBER 2001

DD-808-04

SHEET
1 OF 1