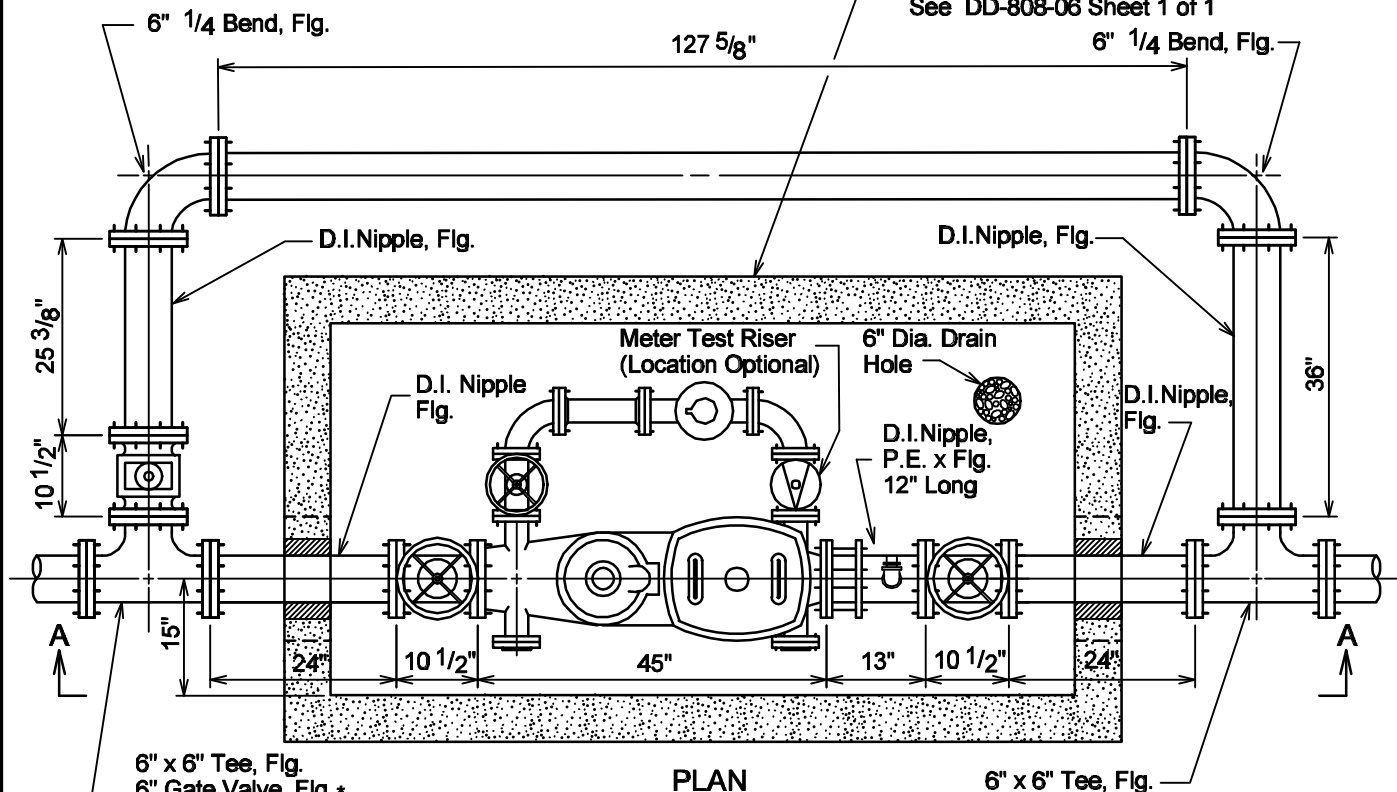


4' x 8' x 4' Rectangular Concrete Vault  
(Dalworth Quickset No. 4C8-2  
Series or approved equal)  
See DD-808-06 Sheet 1 of 1

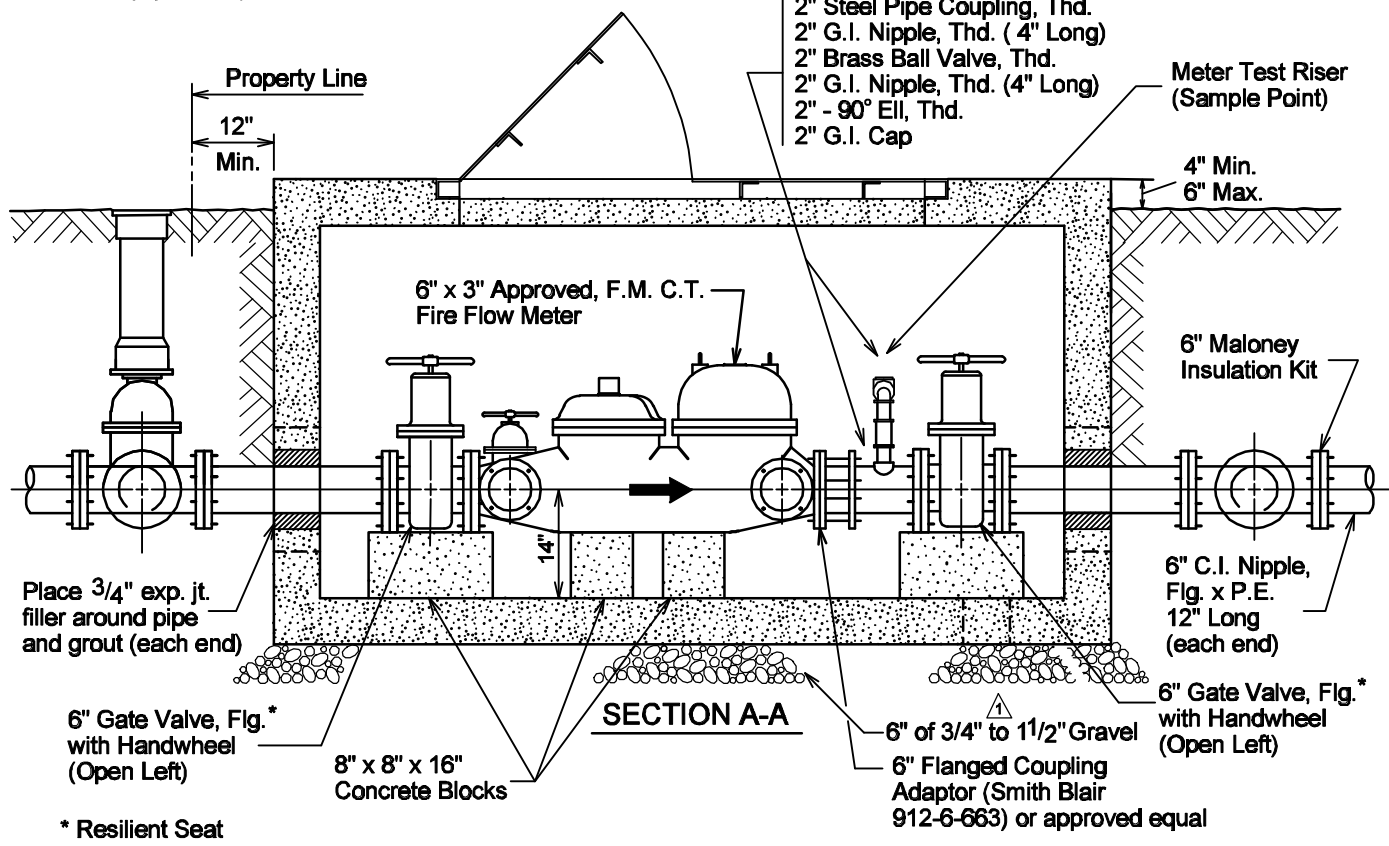


**PLAN**

6" x 6" Tee, Fig.  
6" Gate Valve, Fig.\*  
6" Valve Box, Complete  
(Open Left)

**CONTRACTOR FURNISHED**

- 2" Steel Pipe Coupling, Thd.
- 2" G.I. Nipple, Thd. (4" Long)
- 2" Brass Ball Valve, Thd.
- 2" G.I. Nipple, Thd. (4" Long)
- 2" - 90° Ell, Thd.
- 2" G.I. Cap



**SECTION A-A**

Place 3/4" exp. jt. filler around pipe and grout (each end)

6" Gate Valve, Fig.\*  
with Handwheel  
(Open Left)

\* Resilient Seat

8" x 8" x 16"  
Concrete Blocks

6" of 3/4" to 1 1/2" Gravel  
6" Flanged Coupling  
Adaptor (Smith Blair  
912-6-663) or approved equal

Meter Test Riser  
(Sample Point)

4" Min.  
6" Max.

6" Maloney  
Insulation Kit

6" C.I. Nipple,  
Fig. x P.E.  
12" Long  
(each end)

6" Gate Valve, Fig.\*  
with Handwheel  
(Open Left)

PROPERTY OF  
**SAN ANTONIO WATER SYSTEM**  
SAN ANTONIO, TEXAS

**6" FIRE FLOW  
METER INSTALLATION**

APPROVED  
AUGUST 2000

REVISED  
REVISION 1  
DECEMBER 2001

**DD-824-10**

SHEET  
1 OF 1