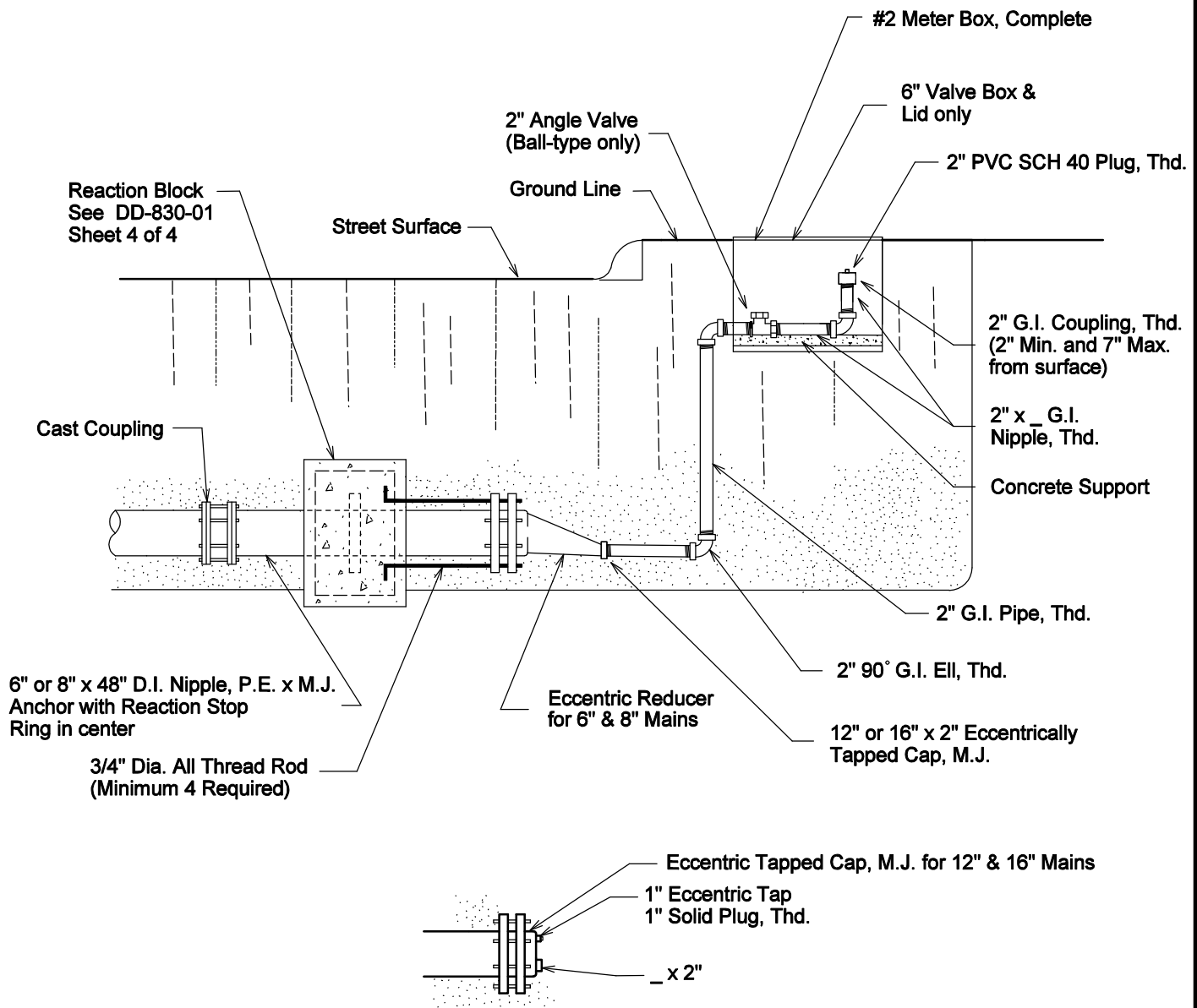


Notes:

1. All ferrous metal surfaces in accordance with 814.3 SAWS Water Specifications.



ELEVATION

PROPERTY OF SAN ANTONIO WATER SYSTEM SAN ANTONIO, TEXAS	2" PERMANENT BLOW-OFF ASSEMBLY ON 6" & 8" MAINS	APPROVED	REVISED
		AUGUST 1998	
		DD-844-02	SHEET 3 OF 3