

San Antonio Water System Standard Specifications for Construction

ITEM NO. 846
AIR RELEASE ASSEMBLIES

846.1 **DESCRIPTION:** This item shall consist of air release assemblies installed in accordance with these specifications and as directed by the Engineer/Owner.

846.2 **MATERIALS:** The materials for air release assemblies installation and adjustment shall conform to the specifications contained within the latest revision of SAWS' Material Specification 29-01, "Air Release, Vacuum and Combination Air Valves."

846.3 **CONSTRUCTION:** Air release assemblies shall be installed at the location shown on the plans or as directed by the Engineer.

Air release assemblies in an open trench water main installation shall be installed in accordance with Standard Drawing DD846 Series and shall include the valve, valve boxes, tapping saddle, pipe, fittings, accessories and appurtenances. It shall also include the service line and tap to the main line. Air release assemblies installed in parkways or easements and on side of street pavements shall be installed in accordance with Standard Drawing DD 846-01, sheet 2 of 2, regardless of size.

Air release assemblies installed on steel pipe attached to a bridge structure shall include the outlet on the steel pipe, the valve, valve box, pipe, fittings, security enclosure, accessories and appurtenances.

846.4 **MEASUREMENT:** Air release assemblies will be measured by the unit of each such assembly of the various sizes of air release assemblies installed.

846.5 **PAYMENT:** Payment for air release assemblies will be made at the unit price bid for each such assembly of the various sizes installed in accordance with the details shown in the Standard Drawing DD-846 Series. Such payment shall also include; excavation, selected embedment material, anti-corrosion embedment when specified, hauling and disposition of surplus excavated materials, blocking, and various types and sizes of meter boxes.

1" x 6" G.I. Nipple

No. 2 C.I. Rectangular Meter Box Lid with bracing & Drop Handle in Lid

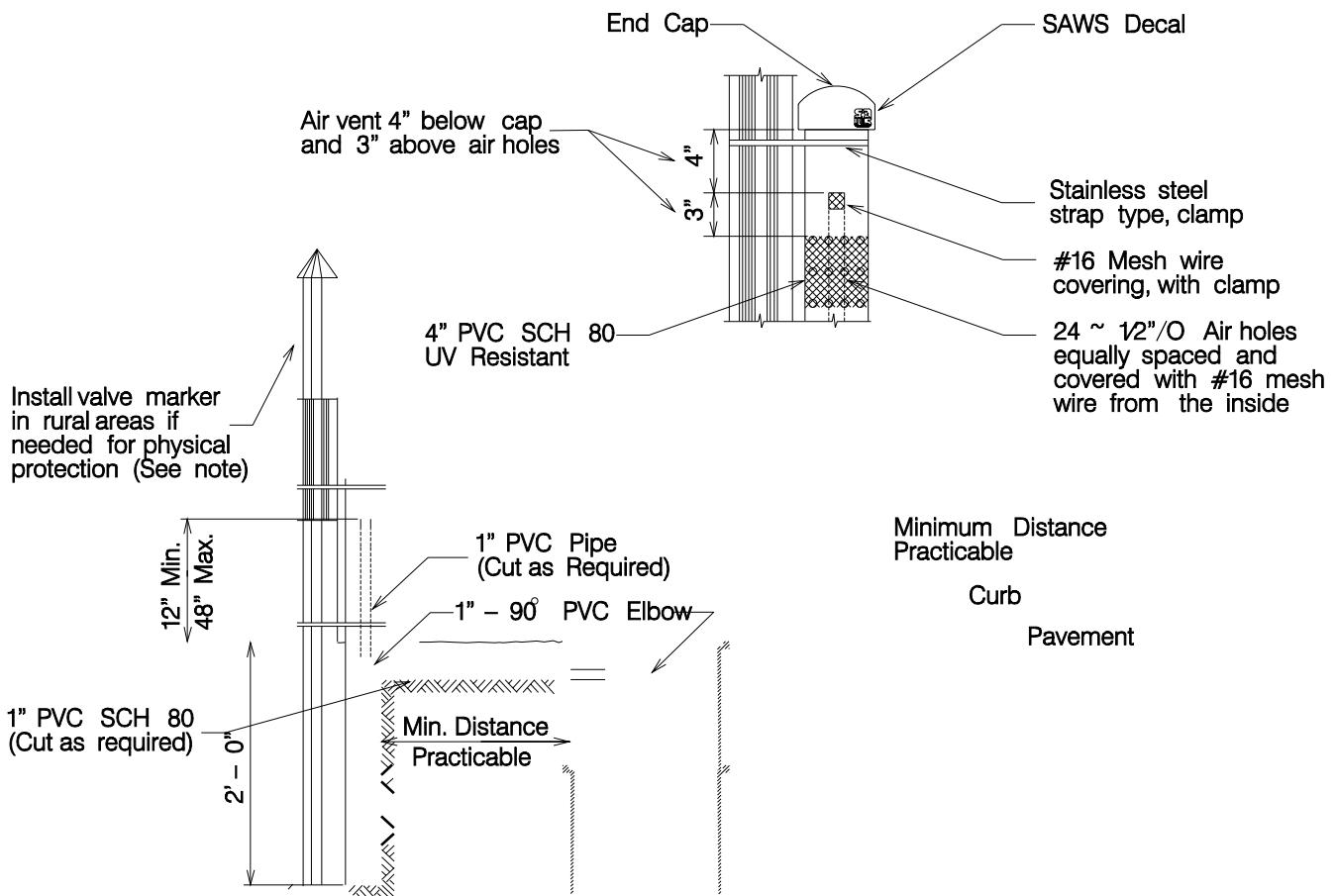
1" Air Angle Valve, C.U. x I.P.

1" Combination Vacuum & Air Release Valve APCO No. 143C or approved equal

1" 90° G.I. Steel Elbow

3" x 8" x 2" Thick brick support (Approx. 6 bricks required)

3" x 8" x 2" Thick brick support for Meter Box (Approx. 11 bricks required)



Install valve marker in rural areas if needed for physical protection (See note)

1" PVC SCH 80 (Cut as required)

12" Min.
48" Max.

1" PVC Pipe (Cut as Required)

1" - 90° PVC Elbow

Min. Distance Practicable

2' - 0"

No. 2 Rectangular Meter Boxes set parallel to and flush with top of curb (2 Required)

1" Copper Tubing (Continuous upgrade to Curb Stop)

Minimum Distance Practicable

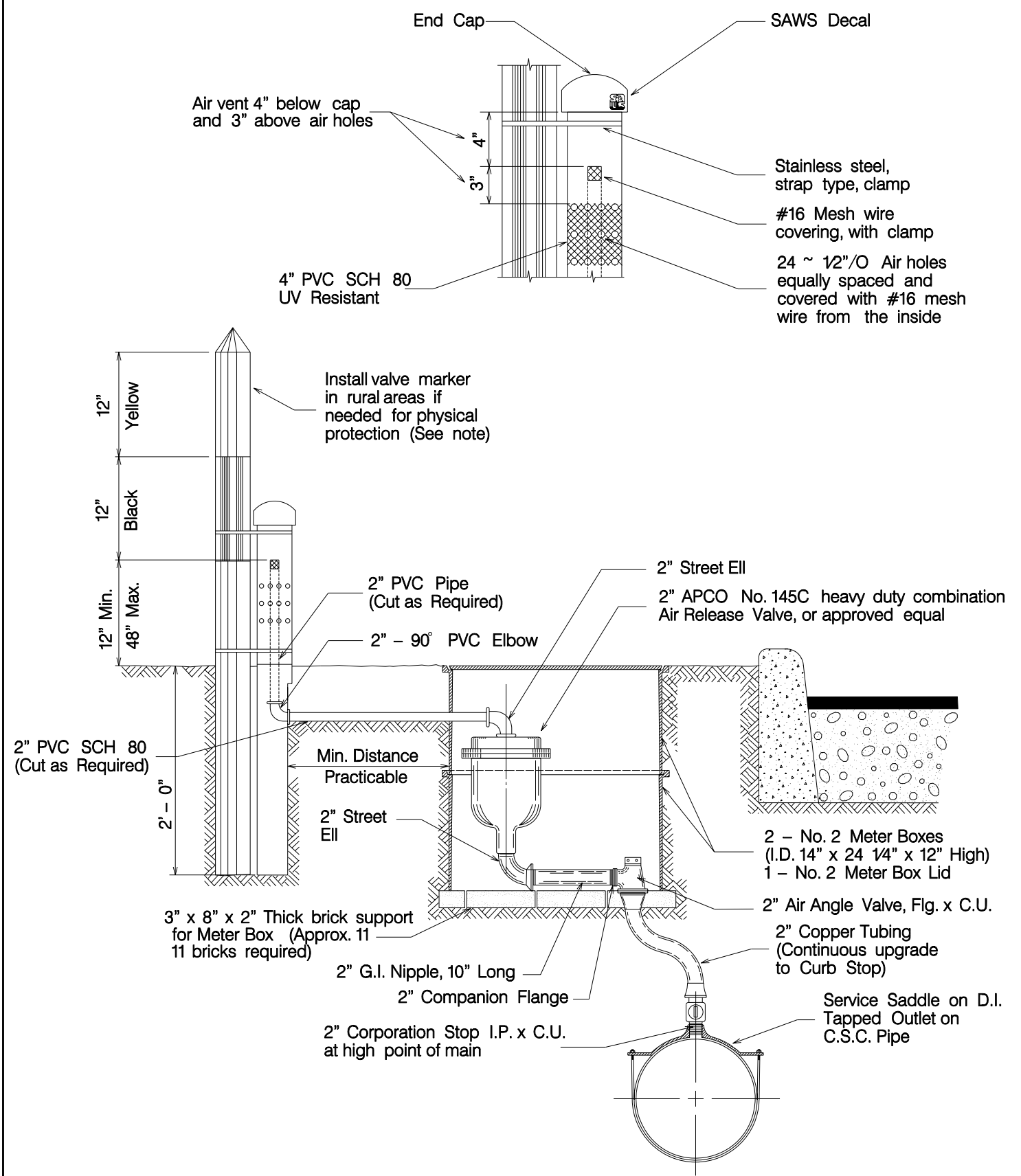
Curb

Pavement

1" Corporation Stop, I.P. x C.U., to be installed at high point of main

Note:

In rural areas, riser should be at Property Line and at maximum height.



Note:
 In rural areas, riser should be at Property Line and at maximum height.

PROPERTY OF SAN ANTONIO WATER SYSTEM SAN ANTONIO, TEXAS	INSTALLATION OF 2" AIR RELEASE VALVE	APPROVED	REVISED
		March 2008	
		DD-846-02	
		SHEET 1 OF 1	