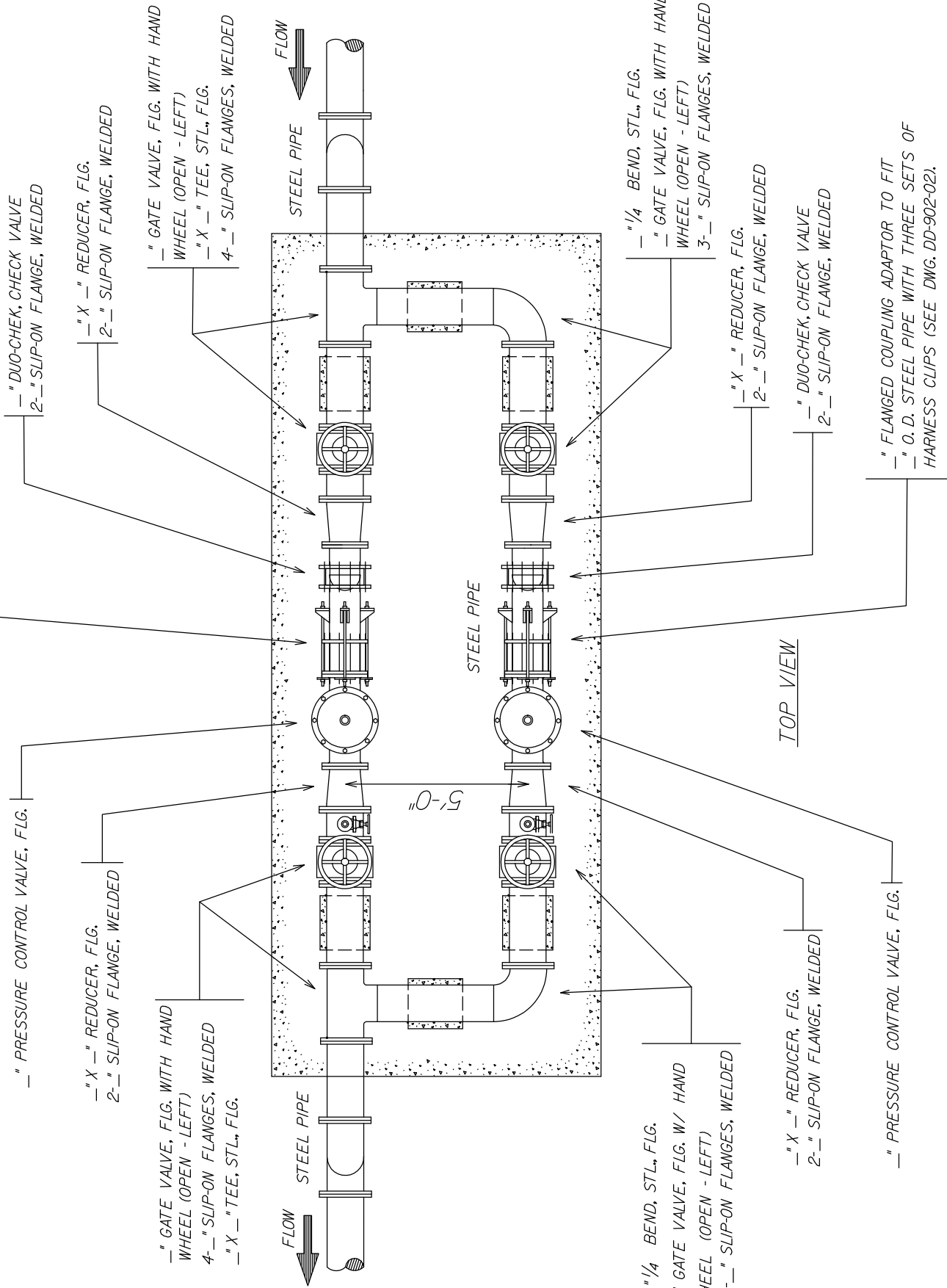


**NOTE:**

FITTINGS AND PIPE SIZE TO BE DETERMINED BY ENGINEER.



TOP VIEW

— " DUO-CHEK, CHECK VALVE  
2- " SLIP-ON FLANGE, WELDED

— " X — " REDUCER, FLG.  
2- " SLIP-ON FLANGE, WELDED

— " GATE VALVE, FLG. WITH HAND  
WHEEL (OPEN - LEFT)  
— " X — " TEE, STL., FLG.  
4- " SLIP-ON FLANGES, WELDED

— " PRESSURE CONTROL VALVE, FLG.

— " X — " REDUCER, FLG.  
2- " SLIP-ON FLANGE, WELDED

— " GATE VALVE, FLG. WITH HAND  
WHEEL (OPEN - LEFT)  
4- " SLIP-ON FLANGES, WELDED  
— " X — " TEE, STL., FLG.

— 1/4 BEND, STL., FLG.  
— " GATE VALVE, FLG. W/ HAND  
WHEEL (OPEN - LEFT)  
3- " SLIP-ON FLANGES, WELDED

— 1/4 BEND, STL., FLG.  
— " GATE VALVE, FLG. WITH HAND  
WHEEL (OPEN - LEFT)  
3- " SLIP-ON FLANGES, WELDED

— " X — " REDUCER, FLG.  
2- " SLIP-ON FLANGE, WELDED

— " DUO-CHEK, CHECK VALVE  
2- " SLIP-ON FLANGE, WELDED

— " PRESSURE CONTROL VALVE, FLG.

— " FLANGED COUPLING ADAPTOR TO FIT  
— " O. D. STEEL PIPE WITH THREE SETS OF  
HARNESSE CLIPS (SEE DWG. DD-902-02).

PROPERTY OF  
SAN ANTONIO WATER SYSTEM  
SAN ANTONIO, TEXAS

PRESSURE  
REDUCER VALVE  
ASSEMBLY

APPROVED  
7-14-00

REVISED

DD-901-05

SHEET  
2 OF 3