

2" STEEL PIPE COUPLING, THD. WELDED TO THE SIDE OF PIPE (2" TAP) (3000 LB.)
 2" G.I. NIPPLE, THD. (3" LONG)
 2" BRASS GATE VALVE, THD.
 2" G.I. 90 DEG. ELBOW, THD.
 2-2" G.I. NIPPLE, THD. (4" LONG)
 2" G.I. PIPE, CUT AS REQ'D.
 2" CHECK VALVE
 FLOW IS TOWARD WELL PUMP

2" STEEL PIPE COUPLING, THD. WELDED TO THE SIDE OF PIPE (2" TAP) (3000 LB.)
 2" G.I. NIPPLE, THD. (3" LONG)
 2" BRASS GATE VALVE, THD.
 2" G.I. 90 DEG. ELBOW, THD.
 2-2" G.I. NIPPLE, THD. (4" LONG)
 2" G.I. PIPE, THD. (12" LONG)

PIPE SIZE VARIES

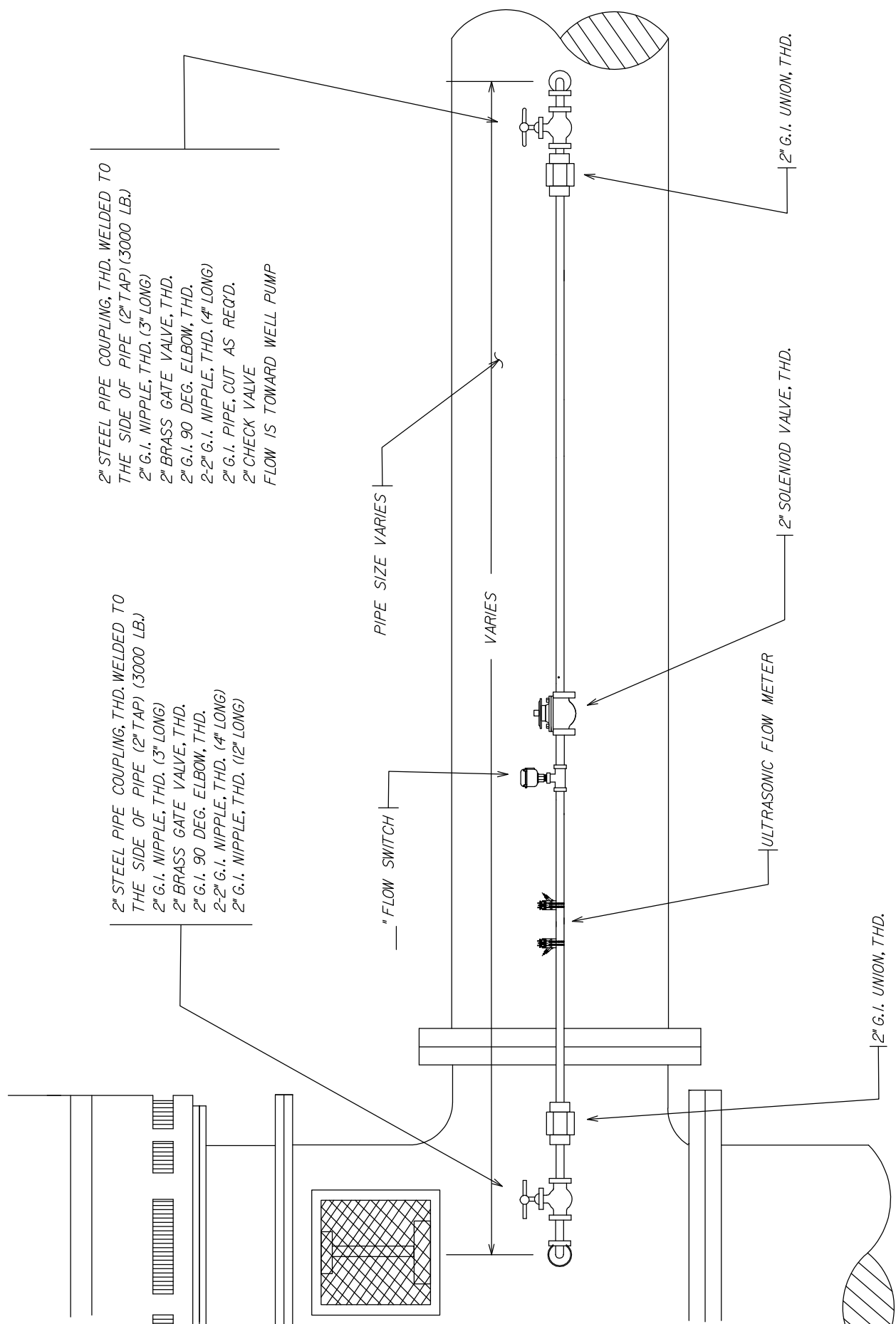
VARIES

2" SOLENOID VALVE, THD.

ULTRASONIC FLOW METER

2" G.I. UNION, THD.

2" G.I. UNION, THD.



NOTE:
 1. FREEZE PROTECTION PIPE WRAP ON 2" G.I. PIPE CUT AS REQ'D.
 2. FLOW SWITCH TO BE SIZED BY ENGINEER.

PROPERTY OF
 SAN ANTONIO WATER SYSTEM
 SAN ANTONIO, TEXAS

PREBEARING PRELUBE
 WATER LINE ASSEMBLY

APPROVED
 7-14-00

REVISED

DD-902-01

SHEET
 3 OF 3