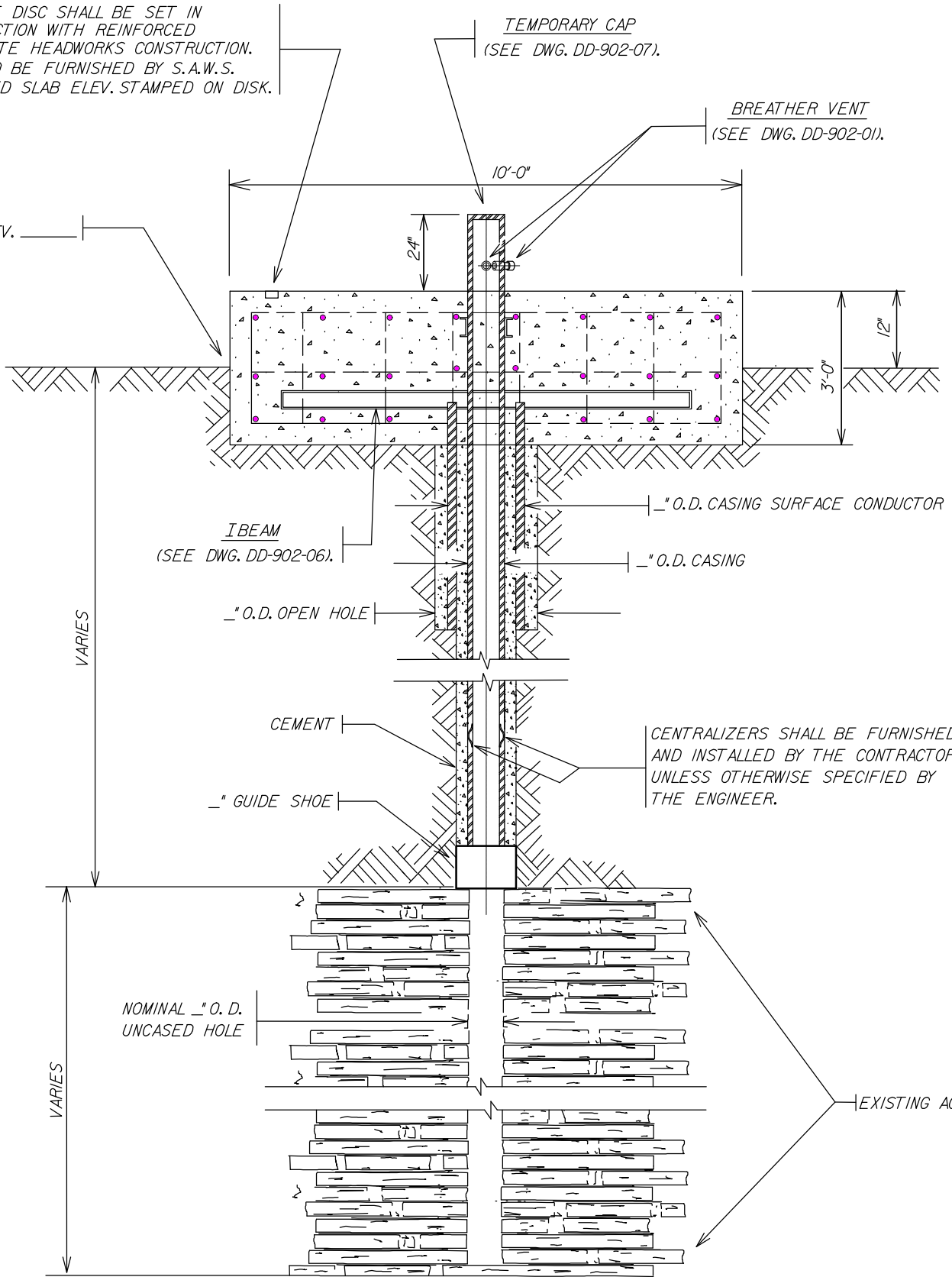


BRONZE DISC SHALL BE SET IN CONJUNCTION WITH REINFORCED CONCRETE HEADWORKS CONSTRUCTION. DISC TO BE FURNISHED BY S.A.W.S. FINISHED SLAB ELEV. STAMPED ON DISK.

TEMPORARY CAP
(SEE DWG. DD-902-07).

BREATHER VENT
(SEE DWG. DD-902-01).

ELEV.



CENTRALIZERS SHALL BE FURNISHED AND INSTALLED BY THE CONTRACTOR UNLESS OTHERWISE SPECIFIED BY THE ENGINEER.

NOMINAL 12" O.D. UNCASSED HOLE

EXISTING AQUIFER

PROPERTY OF SAN ANTONIO WATER SYSTEM SAN ANTONIO, TEXAS	WELL CASING	APPROVED	REVISED
		7-14-00	
		DD-902-06	
		SHEET 1 OF 2	