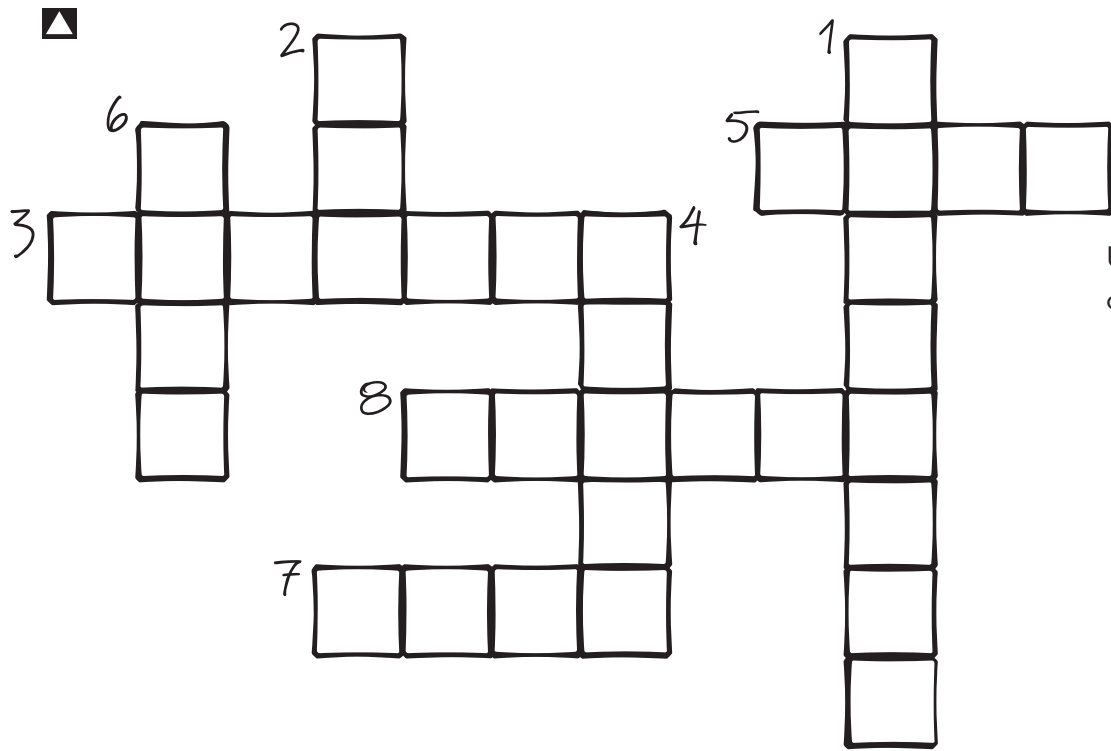


As more and more people need water to use, it's time to realize that this is something we can't abuse. "Why should we save water?" Willie asks with a shout. "Well listen up closely," replies Wendy Weather, "because you're about to find out."

It's Time to Conserve



Use these words to complete the puzzle.

- OFF
- WATER
- FOUR
- NATIVE
- LONG
- CONSERVE
- LOW FLOW
- HOSE

DOWN

1. To _____ means using only the amount of water we need.
2. Turn _____ the water while brushing your teeth.
4. _____ is the most important substance for life on Earth.
6. Do not take _____ showers.

ACROSS

3. You can conserve water by having _____ shower heads installed.
5. Do not use a water _____ to sweep the driveway.
7. Toilets use _____ to seven gallons of water with each flush.
8. _____ plants do not need as much water to grow.

Help Willie and Callie Decode the Water Secrets

▲ Use the code below to fill in the message.



★	✓	😊	☹️	✉️	✳️	🕒	◆	■	●	+	👁️	✂️	💾	🚗	🎵	✍️	✦	💧	☎️	🖱️	👋	⚙️	🕶️	♥️	
A	B	C	D	E	F	G	H	I	J	K	L	M	N	O	P	Q	R	S	T	U	V	W	X	Y	Z


◆	✉️	👁️	🎵	😊	★	👁️	👁️	■	✉️			
✦	★	🖱️	✉️	👋	★	💧	✉️	✍️	✓	🕶️		
💧	☎️	✍️	💾	■	💾	🕒	🚗	✳️	✳️	💧	◆	✉️
✳️	★	☎️	😊	✉️	💧	👋	◆	■	👁️	✉️		
✓	✍️	☎️	✦	◆	■	💾	🕒	🕶️	🚗	☎️	✍️	
💧	✉️	✉️	💧	◆								

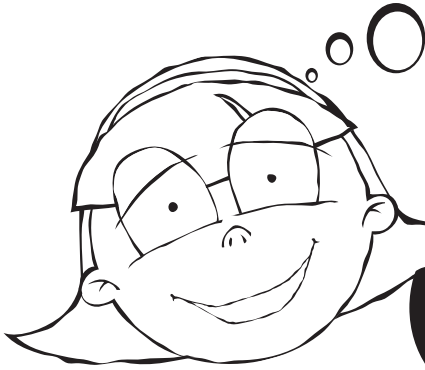


Can you decode this message?

✓ 2 "C" that

y +  

does  drip



“Why should we save water? There’s another reason too. Water is more important than to just me and you. There are certain plants and animals that are in short supply and if we use up all their water, they probably will die. We call them endangered species and they live in a nearby stream so if you listen to me closely, you will learn what endangered means.”

Endangered Species

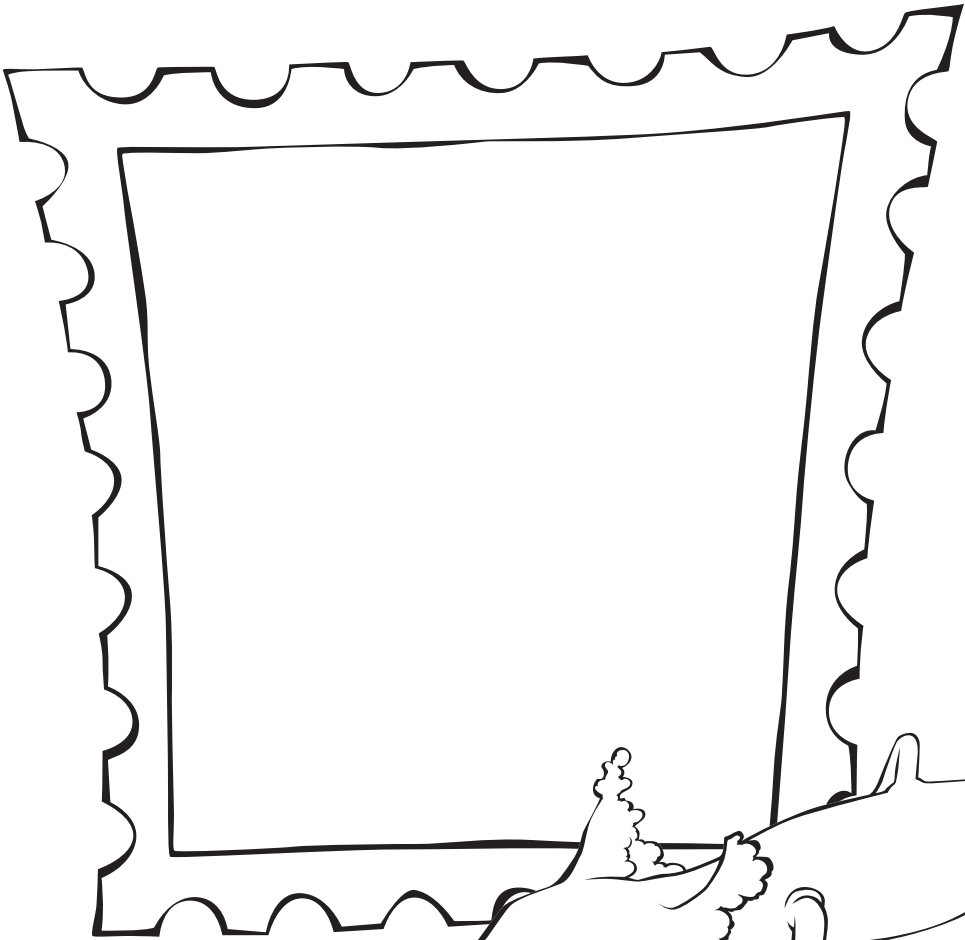
A plant or animal that may not survive because of human activities or environmental conditions.

Hold the page to a mirror to find out what endangered means.

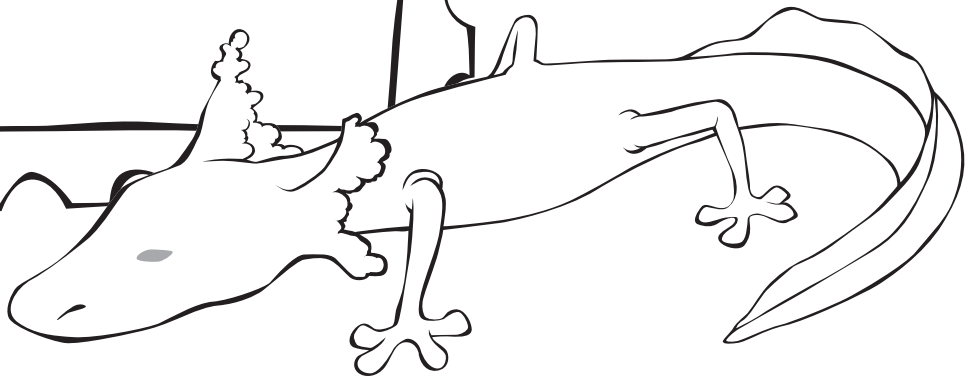
- ◻ Use the internet to research the endangered
- ◻ species in our area. Two good sites are:

- www.edwardsaquifer.net
- www.endangered.fws.gov/wildlife.html

WENDY'S FAST FACT
There are seven
endangered species in our
area that rely
on water to survive.



The Texas Blind Salamander, like the one below, is an endangered species that lives in our area. It grows about four inches long and is pink in color.



- ◻ Design a stamp that would bring awareness to
- ◻ endangered species like this one.

