

June 24, 2025

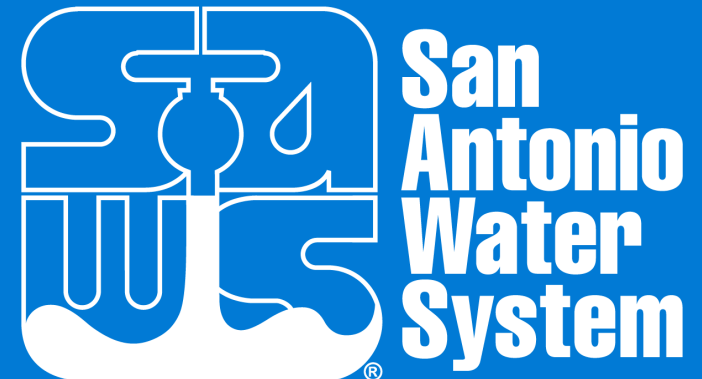
HOT WELLS MISSION REACH- WATER MAIN REPLACEMENT

Mark Medina, P.E.

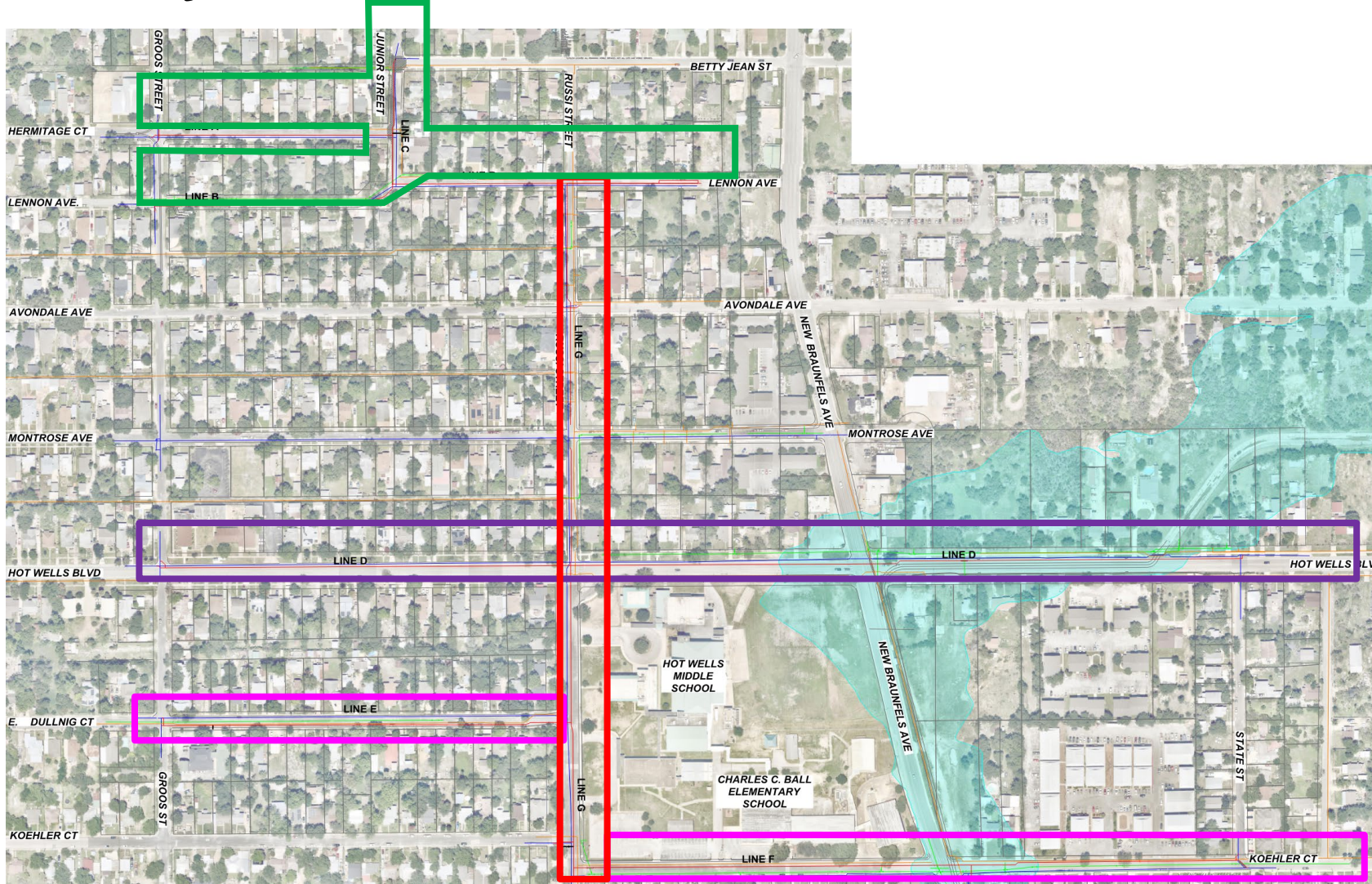
Project Engineer, CFM, MCI President

Alexander H. Manjarres, P.E.

Project Engineer I, SAWWS Sewer & Water Pipeline



Project Limits



- The project spans several roadways in southeast San Antonio, including:
 - E Hermitage Ct from Groos Ave to Junior St
 - Lennon Ave from Groos Ave to dead end
 - Junior St from Betty Jean St to Lennon Ave
 - Hot Wells Blvd from Groos Ave to State St
 - E Dulling Ct from Groos Ave to Koehler Ct
 - Koehler Ct from Russi to State St

Project Purpose



The San Antonio Water System (SAWS) identified Hot Wells Mission Reach Project to enhance the reliability, capacity, and efficiency of the water distributions system within a densely developed area of San Antonio, TX.

The project involves the replacement of aging and undersized water main with new mains. Reasons for water main upgrades

- Replace aged water lines
- Prevent water main breaks within project limits
- Provide better fire coverage (additional fire hydrants are being installed)

Project Scope



The project involves replacing approximately 10,969 linear feet. Including:

- Approximately 10,726 LF of open cut trench excavations
- Approximately 243 LF of trenchless excavations
- Approximately 19 fire hydrants replacements
- Approximately 21 water tie-ins

What to Expect



Construction Impacts

- Street, curb, and sidewalk trenching for new 8-in water main installation
- Contractor will ensure project site is clean
- Contractor will cover trenches at the end of each working day
- No impacts to other utilities
- Temporary disruption to water during construction

What to Expect



Traffic Impacts

- Full and partial street closures (street closure typically done block to block)
- Contractor will set up detours, barricades, and traffic control
- Contractor will allow some through traffic
- Residents will always have access to their properties

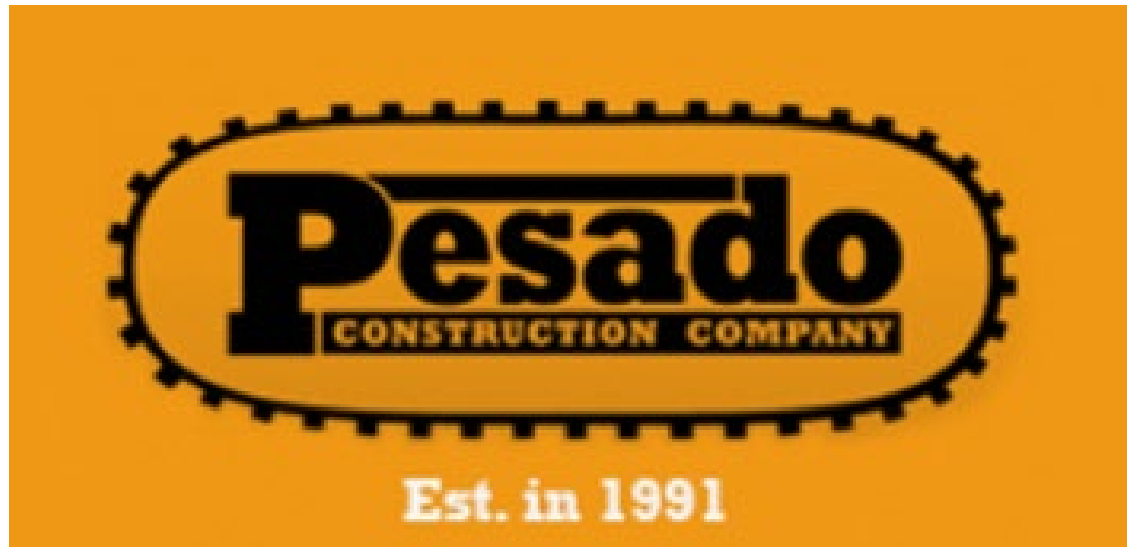
What to Expect



Water Service Impacts

- Residents will have continuous service during construction
- Expect temporary water outages during water main tie-ins and service reconnections
- SAWS and Contractor to provide notices before of any water shutdowns

Contractor's Background



Pesado Construction Company was established in 1991 with headquarters in San Antonio

Pesado Construction Company is experienced in open-cut construction and has been awarded over \$55M of SAWWS work over the past 5 years.

Pesado construction has completed over 1000 successful projects throughout their company's history.

Project Timeline

SAWS to provide project information brochures prior to starting construction

Approximate construction duration

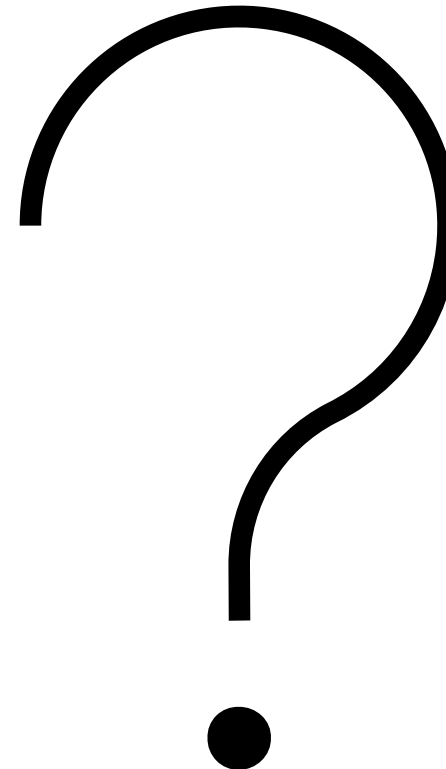
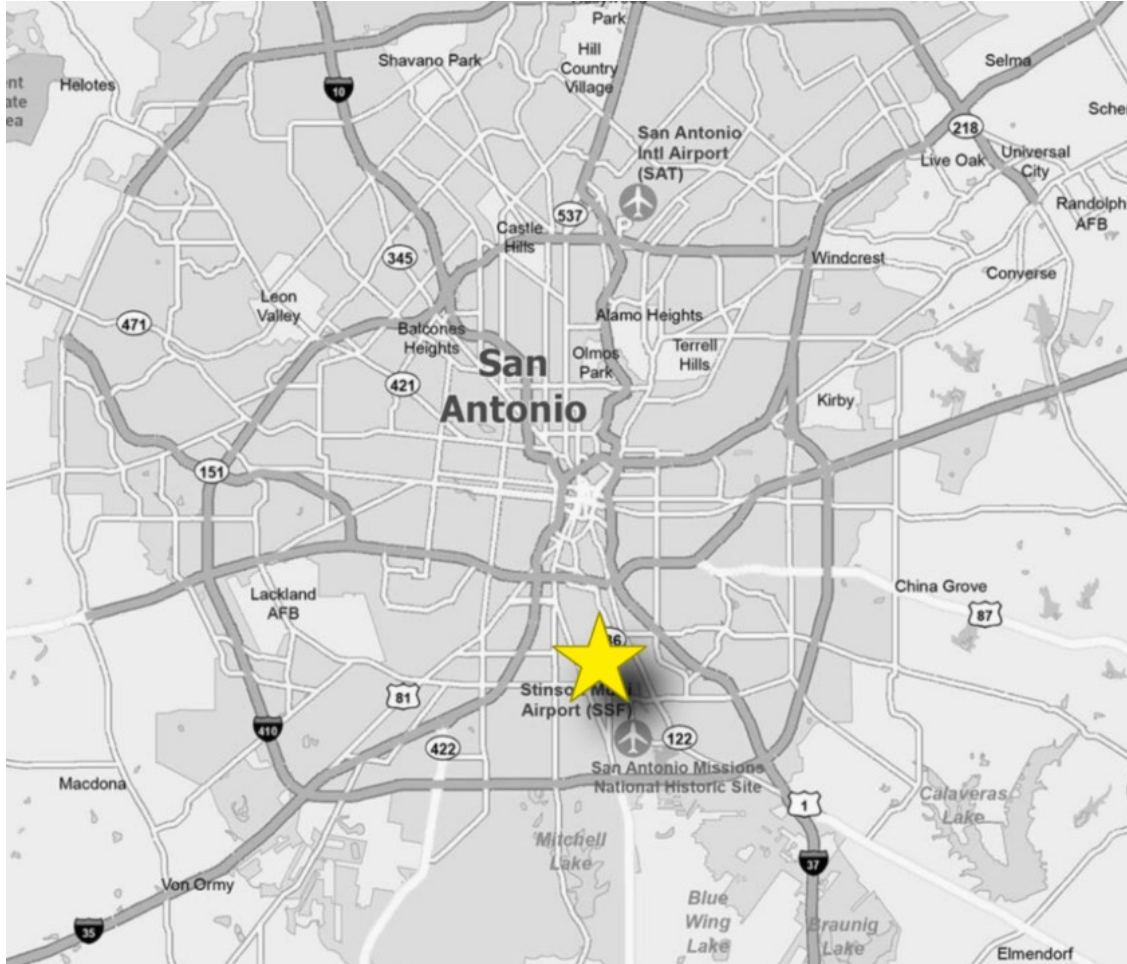
- **Construction Start:** Summer 2025
- **Construction End:** Winter 2026

Contact Information

SAWS Communications Representative - Byron Gipson: (210) 233-2977

Mark Ibarra - Project Manager, Pesado Construction, Co.- Contractor

Questions



June 24, 2025

HOT WELLS MISSION REACH- WATER MAIN REPLACEMENT

Mark Medina, P.E.

Project Engineer, CFM, MCI President

Alexander H. Manjarres, P.E.

Project Engineer I, SAWWS Sewer & Water Pipeline

