

Blanco Rd. to Orsinger Ln. Pressure Zone 1111 24-inch Water Main Project



Edgar Segovia, PE
WGI, Inc.

Sirahuen Guajardo, PE
San Antonio Water System

Aurelio Nigoche, PM
Qro Mex Construction Co., Inc.

PROJECT OVERVIEW AND OBJECTIVE

Purpose: Improve Water Pressure Consistency in Pressure Zone (PZ 1111)

- Proposed 24-Inch Waterline Segment Will Connect Bitters Road Pump Station to De Zavala Elevated Storage Tank
- 24-Inch Waterline Will Provide Water from Central San Antonio to the Northwest San Antonio Service Area
- Construction Start Date: August 2025



PROJECT SPECIFICS

- Approximately 2.6 miles (12,600 feet) of 24-inch waterline
- Construction to occur over a 2-year period
- Qro Mex Construction Co., Inc. (Contractor) is here for Q&A session and to communicate impact and timelines
- Extensive coordination with multiple entities
 - CoSA Public Works, CoSA Parks, Phil Hardberger Park Conservancy
 - Design coordination with upcoming CoSA George Rd. Low Water Crossing Project
 - CoSA Right-of-Way (Traffic control and restoration requirements)
 - Traffic control takes into account phased construction
 - CoSA Trees identification of trees to remain, protect, and remove (saving 95% of trees)



HARDBERGER PARK CONSTRUCTION

- Contractor will meet with Hardberger Park personnel prior to construction. Construction within Hardberger Park accounts for 19% of overall project.
- Monthly construction meetings with CoSA Parks staff will be required when Contractor is working within Hardberger Park3
 - Construction to occur at off-peak times of year
- Construction time within park has been defined with CoSA Parks and will be coordinated with the Contractor
- Hardberger Park trails to remain open to the public throughout construction
- Voelcker Trailhead will close during construction
 - Hardberger Park (East) Trailhead will remain open



AFFECTED HOMEOWNER ASSOCIATIONS

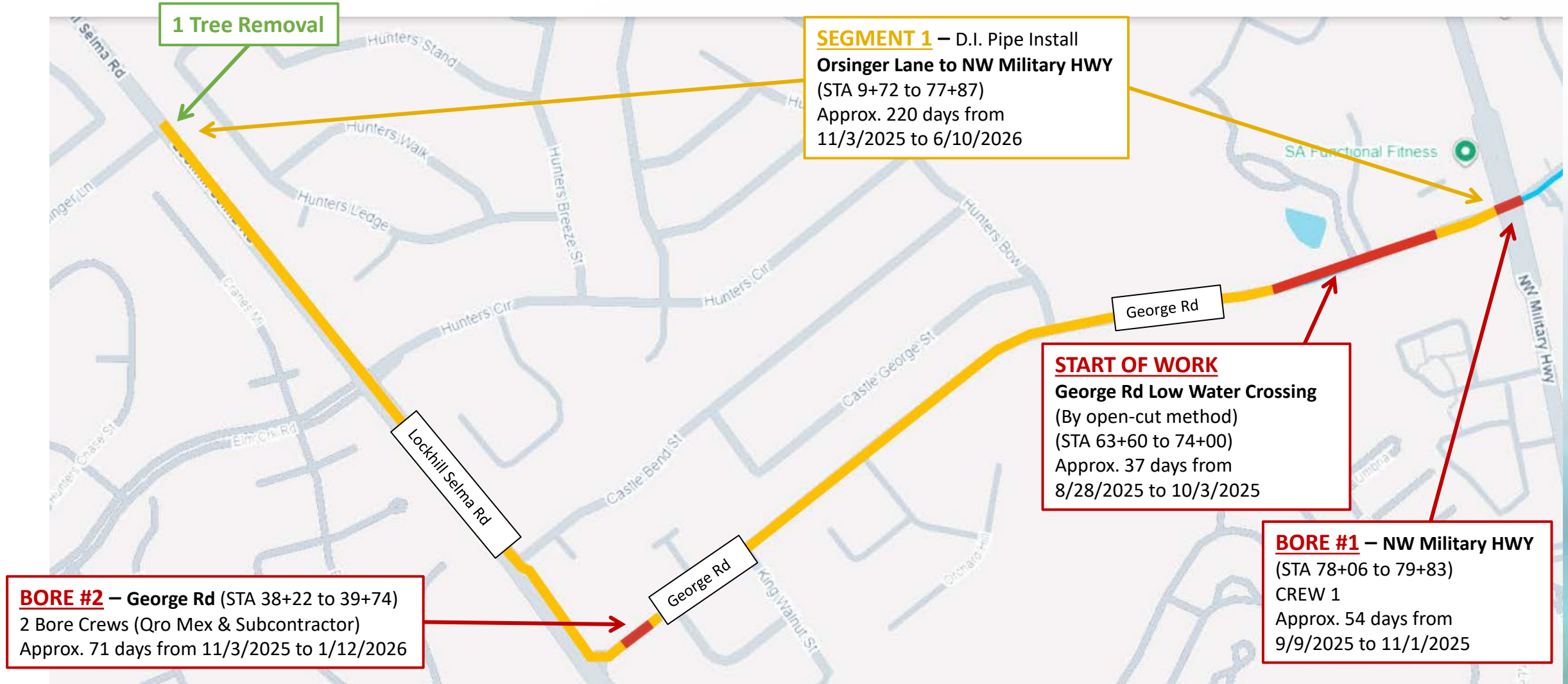


- Phases & Timeline
 - Anticipated start of construction by August 28th.
- Bore Construction
 - NW Military HWY
 - George Road
 - Fairfield Bend Drive
- Traffic Control
 - Road/Lane Closures
 - Detours
- Trees & Trimming
 - All subject to approval by COSA.



PHASING & TIMELINES

QRO MEX CONSTRUCTION

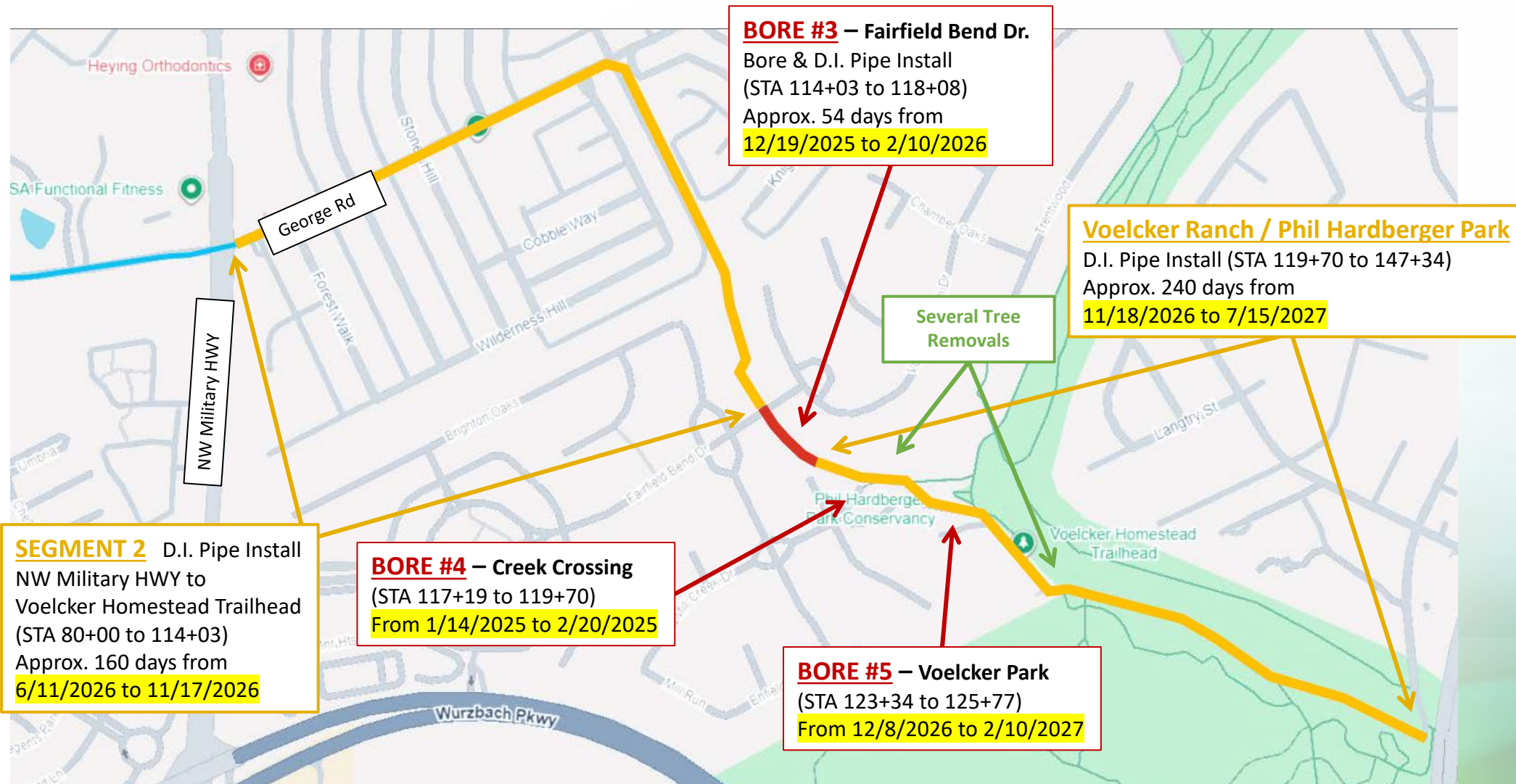


OVERALL DURATION SEG 1: Approx. 45 weeks (311 days)



PHASING & TIMELINES

QRO MEX CONSTRUCTION

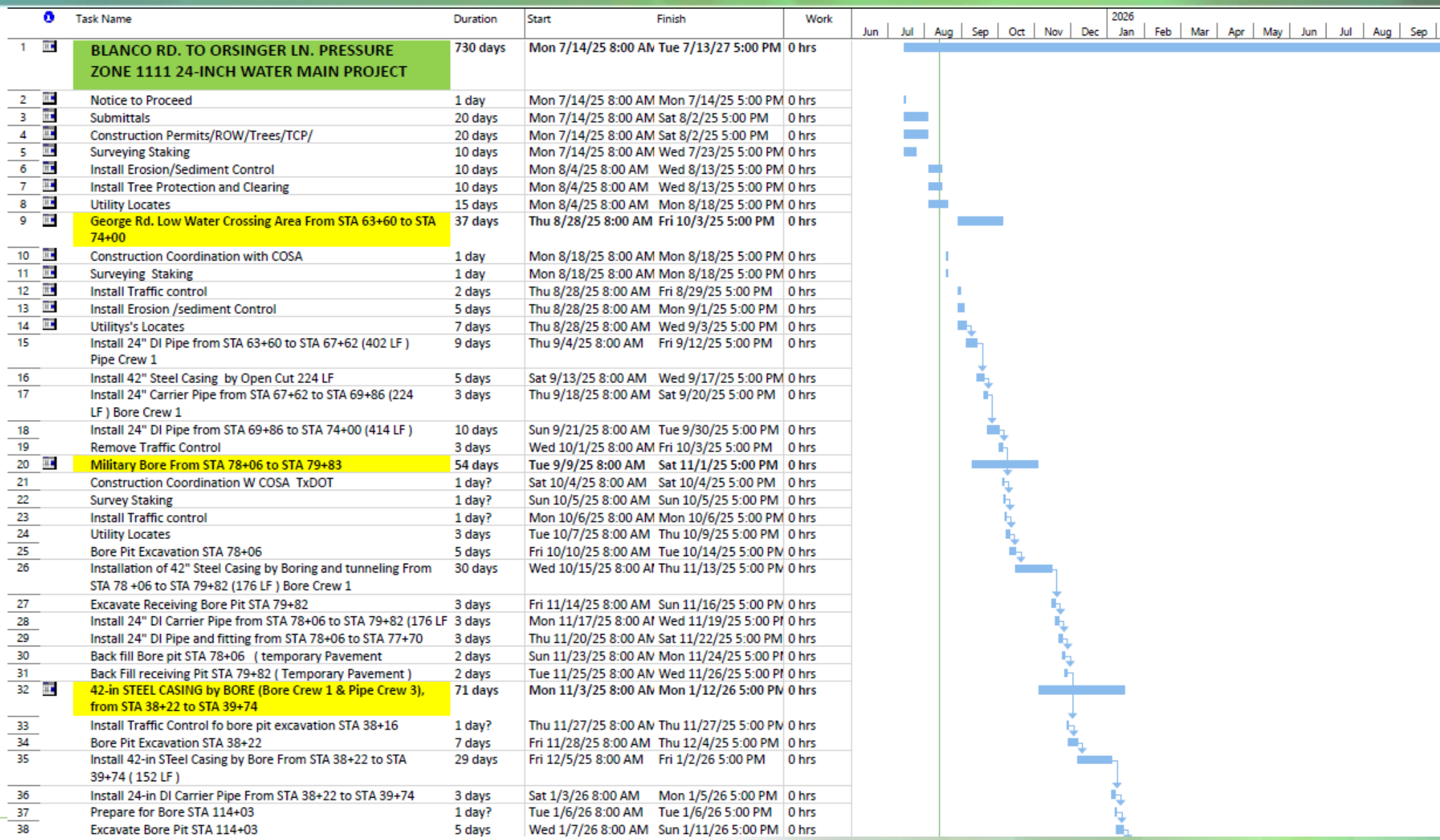


OVERALL DURATION SEG 2: Approx. 65 weeks (454 days)



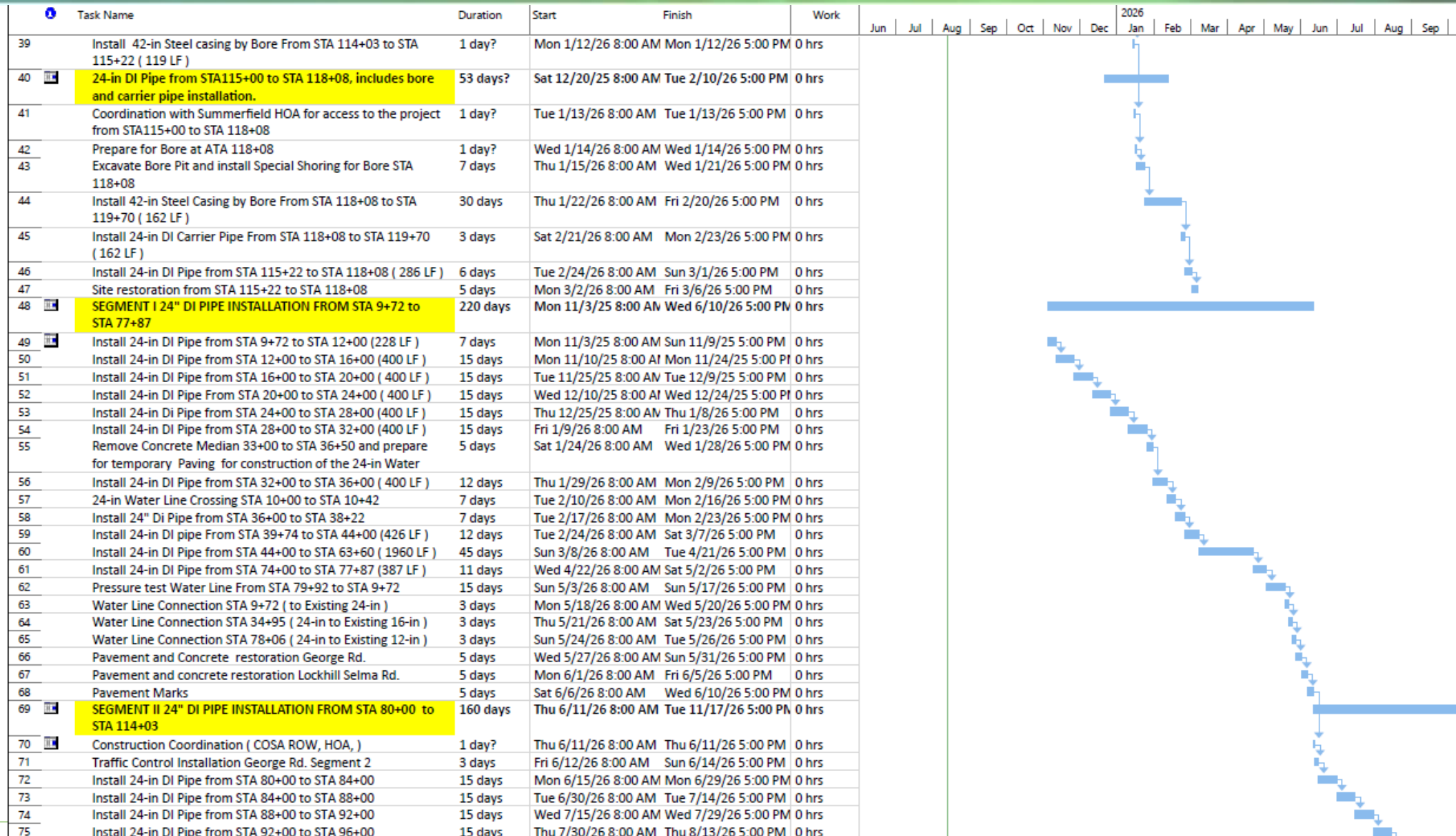
PHASING & TIMELINES

QRO MEX CONSTRUCTION



PHASING & TIMELINES

QRO MEX CONSTRUCTION



PHASING & TIMELINES

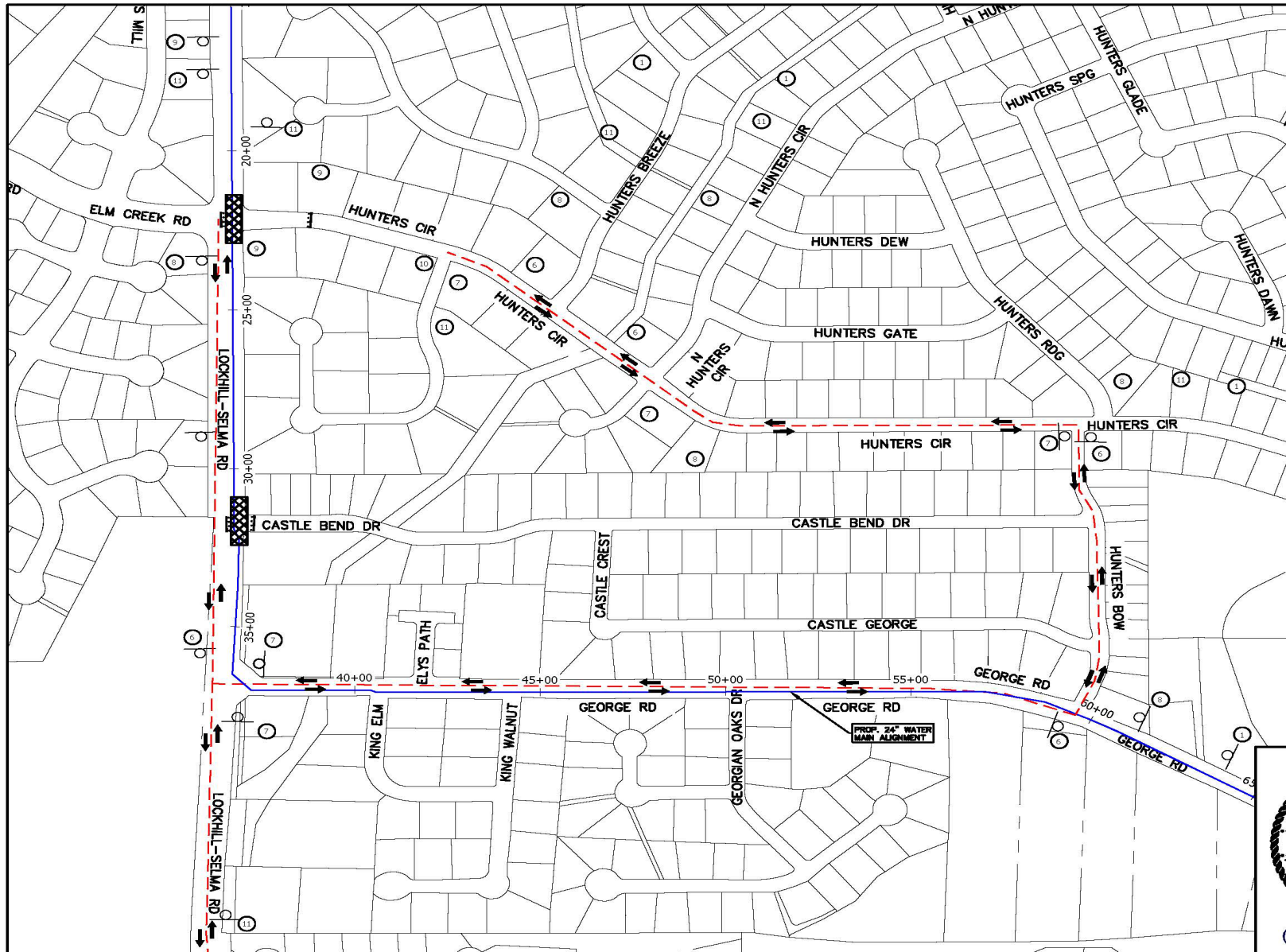
QRO MEX CONSTRUCTION

Task Name	Duration	Start	Finish	Work	2026															
					Jun	Jul	Aug	Sep	Oct	Nov	Dec	Jan	Feb	Mar	Apr	May	Jun	Jul	Aug	Sep
76	Install 24-in DI Pipe from STA 96+00 to STA 100+00	15 days	Fri 8/14/26 8:00 AM	Fri 8/28/26 5:00 PM	0 hrs															
77	Install 24-in DI Pipe from STA 10+00 to STA 104+00	15 days	Sat 8/29/26 8:00 AM	Sat 9/12/26 5:00 PM	0 hrs															
78	Install 24-in DI Pipe from STA 104+00 to STA 108+00	15 days	Sun 9/13/26 8:00 AM	Sun 9/27/26 5:00 PM	0 hrs															
79	Install 24-in DI Pipe from STA 108+00 to STA 112+00	15 days	Mon 9/28/26 8:00 AM	Mon 10/12/26 5:00 PM	0 hrs															
80	Install 24-in DI Pipe from STA 112+00 to STA 114+03	10 days	Tue 10/13/26 8:00 AM	Thu 10/22/26 5:00 PM	0 hrs															
81	Side restoration From STA 97+28 to STA 114+03 Revegetation Hydro Mulching	15 days	Fri 10/23/26 8:00 AM	Fri 11/6/26 5:00 PM	0 hrs															
82	Pavement and Concrete Restoration George Rd. From STA 97+28 to STA 80+00	11 days	Sat 11/7/26 8:00 AM	Tue 11/17/26 5:00 PM	0 hrs															
83	Voelcker Ranch / Hard Berger Park (119+70 to STA 147+34	240 days	Wed 11/18/26 8:00 A	Thu 7/15/27 5:00 PM	0 hrs															
84	Construction Coordination with COSA Parks, Voelcker Ranch, Park Conservancy	5 days	Wed 11/18/26 8:00 AM	Sun 11/22/26 5:00 PM	0 hrs															
85	Install Trees Protection	5 days	Mon 11/23/26 8:00 AM	Fri 11/27/26 5:00 PM	0 hrs															
86	Install Erosion Control	10 days	Sat 11/28/26 8:00 AM	Mon 12/7/26 5:00 PM	0 hrs															
87	Excavate Bore Pit STA 125+77 and Install Trench Protection	5 days	Tue 12/8/26 8:00 AM	Sat 12/12/26 5:00 PM	0 hrs															
88	Install 42-in Steel Casing From by Jack and Bore From STA 125+77 to STA 123+34(242 LF)	60 days	Sun 12/13/26 8:00 AM	Wed 2/10/27 5:00 PM	0 hrs															
89	Install 24-in Carrier from STA 125+77 to STA 123+34 (242+77)	4 days	Thu 2/11/27 8:00 AM	Sun 2/14/27 5:00 PM	0 hrs															
90	Install 24-in DI Pipe from STA 119+70 to STA 123+34 (364 LF)	9 days	Mon 2/15/27 8:00 AM	Tue 2/23/27 5:00 PM	0 hrs															
91	Install 24-in DI Pipe from STA 125+82 to STA 132+00 (618 LF)	14 days	Wed 2/24/27 8:00 AM	Tue 3/9/27 5:00 PM	0 hrs															
92	Install 24-in DI Pipe from STA 132+00 to STA 136+00 (400 LF)	12 days	Wed 3/10/27 8:00 AM	Sun 3/21/27 5:00 PM	0 hrs															
93	Install 24-in DI Pipe from STA 136+00 to STA 140+00 (400 LF)	12 days	Mon 3/22/27 8:00 AM	Fri 4/2/27 5:00 PM	0 hrs															
94	Install 24-in DI Pipe from STA 140+00 to STA 144+00 (400 LF)	12 days	Sat 4/3/27 8:00 AM	Wed 4/14/27 5:00 PM	0 hrs															
95	Install 24-in DI Pipe from STA 144+00 to STA 147+34 (334 LF)	12 days	Thu 4/15/27 8:00 AM	Mon 4/26/27 5:00 PM	0 hrs															
96	Install 20-in DI Pipe from STA 10+00 to 11+00 on the end of the line	10 days	Tue 4/27/27 8:00 AM	Thu 5/6/27 5:00 PM	0 hrs															
97	Pressure test from STA 147+34 to STA 80+00	15 days	Fri 5/7/27 8:00 AM	Fri 5/21/27 5:00 PM	0 hrs															
98	disinfection of the 24-in Water Line	9 days	Sat 5/22/27 8:00 AM	Sun 5/30/27 5:00 PM	0 hrs															
99	Water Line Connection STA 10+00 and STA 11+00 existing 20" & 16" Water Lines	5 days	Mon 5/31/27 8:00 AM	Fri 6/4/27 5:00 PM	0 hrs															
100	Site restoration From STA 125+77 to SAT 147+34 Revegetation, hydro Mulching	10 days	Sat 6/5/27 8:00 AM	Mon 6/14/27 5:00 PM	0 hrs															
101	Pavement and Concrete restoration Voelcker Ln.	10 days	Tue 6/15/27 8:00 AM	Thu 6/24/27 5:00 PM	0 hrs															
102	Punch List Item	15 days	Fri 6/25/27 8:00 AM	Fri 7/9/27 5:00 PM	0 hrs															
103	Final Inspection	2 days	Sat 7/10/27 8:00 AM	Sun 7/11/27 5:00 PM	0 hrs															
104	Demobilization	2 days	Mon 7/12/27 8:00 AM	Tue 7/13/27 5:00 PM	0 hrs															

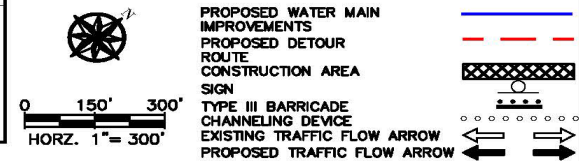


TRAFFIC CONTROL

QRO MEX CONSTRUCTION



1. Coordination with **Hunters Creek Neighborhood Assoc. & Elm Creek Neighborhood Assoc.** within 30 days prior to installation of TC equipment and detour to coordinate access to Hunters Circle through George Road during construction.
2. Detour duration will be limited to **waterline installation across Hunters Circle**. Will restore access to residents through Hunters Circle upon completion of waterline installation and restoration of work area, and will make every attempt to limit impact to neighborhood.
3. Will coordinate with COSA ROW within 60 days prior to construction to coordinate street closure and detour.



REV. NO.	DATE	DESCRIPTION	BY

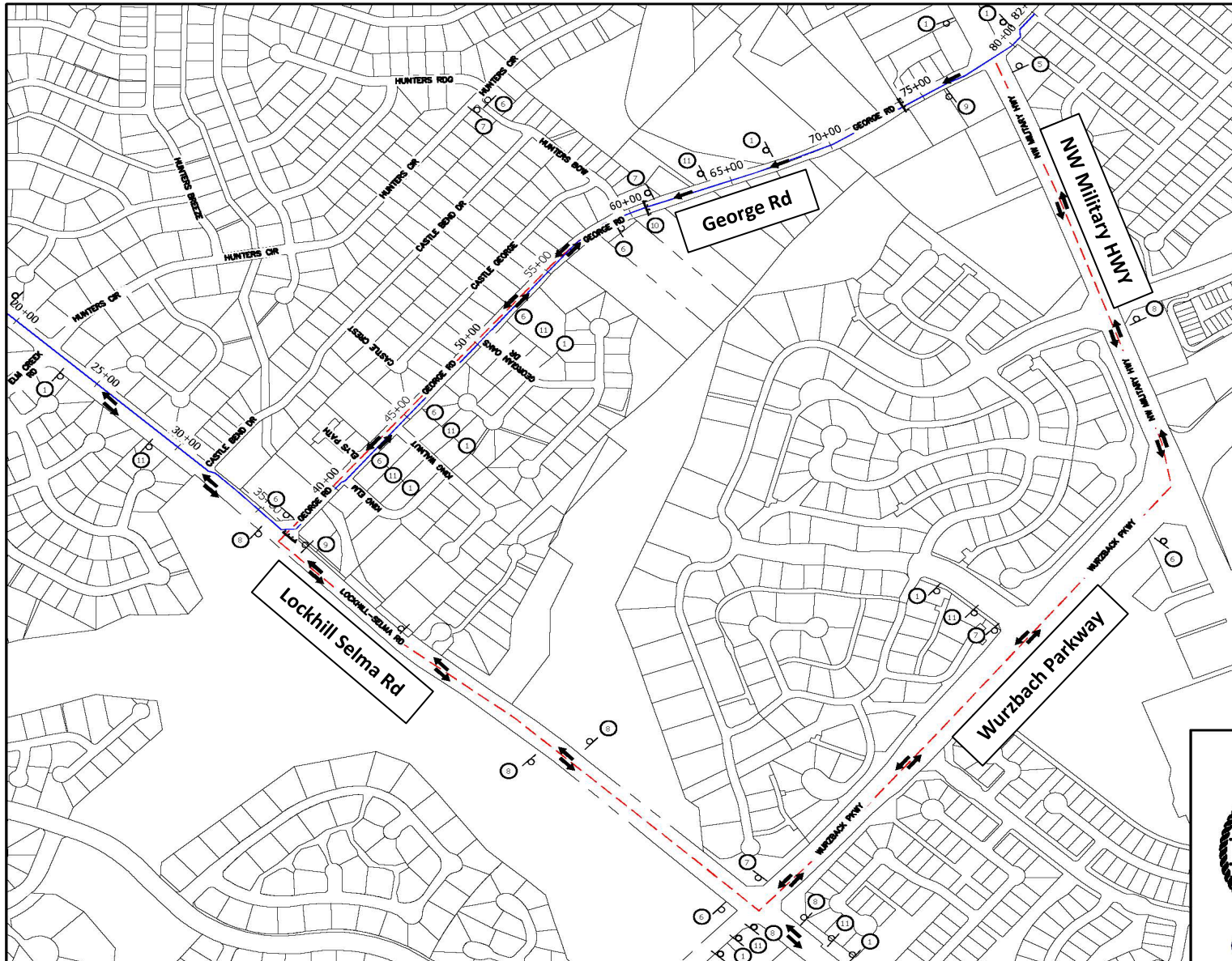
WGL
 WgInc.com
 755 E. MULBERRY AVE., SUITE 501
 SAN ANTONIO, TEXAS 78212
 PHONE: 210.665.9224
 FAX: 210.665.9224

BLANCO RD TO ORSINGER LN.
 PRESSURE ZONE 1111
 24-INCH WATER MAIN PROJECT
 HUNTERS CIR CLOSURE
 TRAFFIC DETOUR

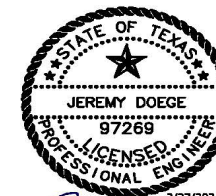
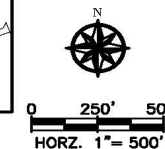
DWG: JA
 SUBMITTAL
 SAMS PROJECT NO.
 SHEET NO.

TRAFFIC CONTROL

QRO MEX CONSTRUCTION



1. Coordination with **Hunters Creek Neighborhood Assoc. & Castle Wood Forest HOA** within 60 days prior to installation of TC equipment and detour to coordinate resident access to **NW Military Road through Hunters Circle** during construction.
2. **Detour duration will be limited to waterline boring activities across NW Military Road.** Will restore access to residents through George Road upon completion of waterline and restoration of work area and will make every attempt to limit impact to neighborhood.
3. Will coordinate with COSA ROW a minimum of 60 days prior to construction to coordinate street closure and detour.
4. Proposed detour is intended to service residents along George Road for all **traffic along Lockhill Selma Road** intending to access NW Military Road shall be **routed through Wurzbach Parkway or Huebner Road** to minimize impact to Hunters Circle residents.



LEGEND

PROPOSED WATER MAIN IMPROVEMENTS	
PROPOSED DETOUR ROUTE	
CONSTRUCTION AREA	
TYPE III BARRICADE CHANNELING DEVICE	
EXISTING TRAFFIC FLOW ARROW	
PROPOSED TRAFFIC FLOW ARROW	

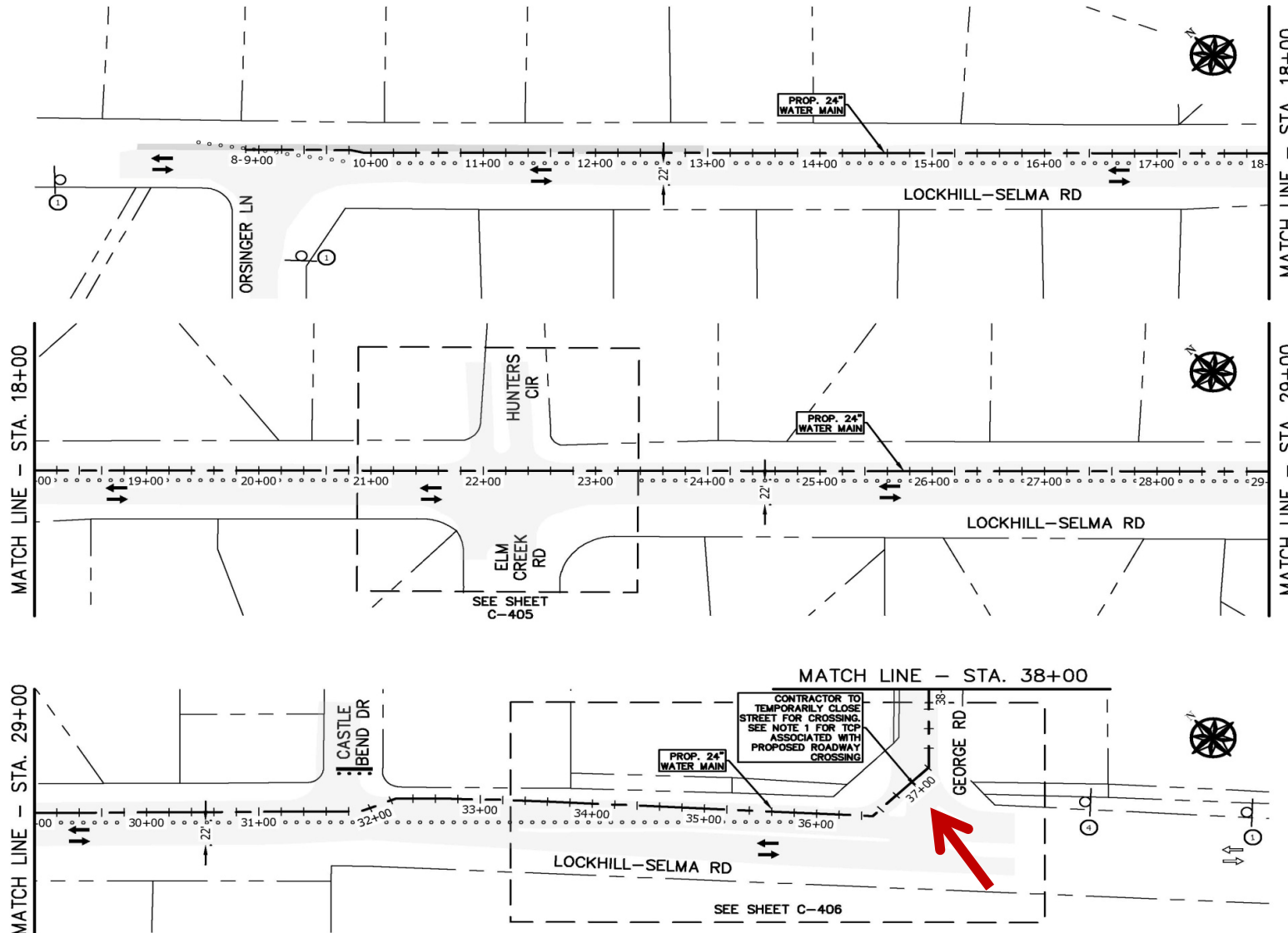
REV. NO.	DATE	DESCRIPTION	BY

755 E MULBERRY AVE., SUITE 501
SAN ANTONIO, TEXAS 78212
FIRM NO. F-15080
210.680.9224

BLANCO RD TO ORSINGER LN.
PRESSURE ZONE 1111
24-INCH WATER MAIN PROJECT
GEORGE ONE-WAY TRAFFIC DETOUR

TRAFFIC CONTROL

QRO MEX CONSTRUCTION



1. Will hire Police Officer for TC purposes when required by COSA ROW Department as part of permitting requirements and to facilitate flow of traffic at all times during construction.

LEGEND

CONSTRUCTION AREA
SIGN
PORTABLE MESSAGE BOARD SIGN
TYPE III BARRICADE
CHANNELING DEVICE
EXISTING TRAFFIC FLOW ARROW
PROPOSED TRAFFIC FLOW ARROW

0 50' 100'
HORZ. 1" = 100'

STATE OF TEXAS
JEREMY DOEGE
97269
LICENSED PROFESSIONAL ENGINEER
3/27/2025

705 E WALBERRY AVE.,
SUITE 501
SAN ANTONIO, TEXAS 78212
FIRM NO. F-15085
210.860.9224

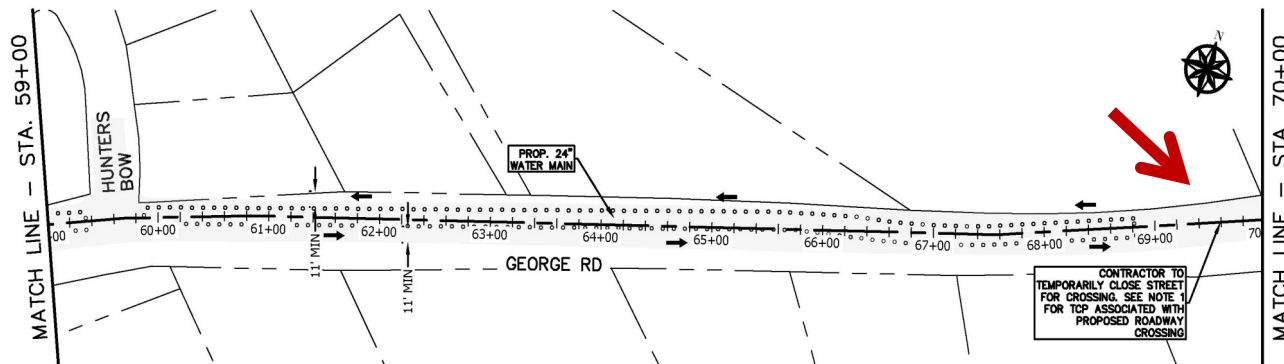
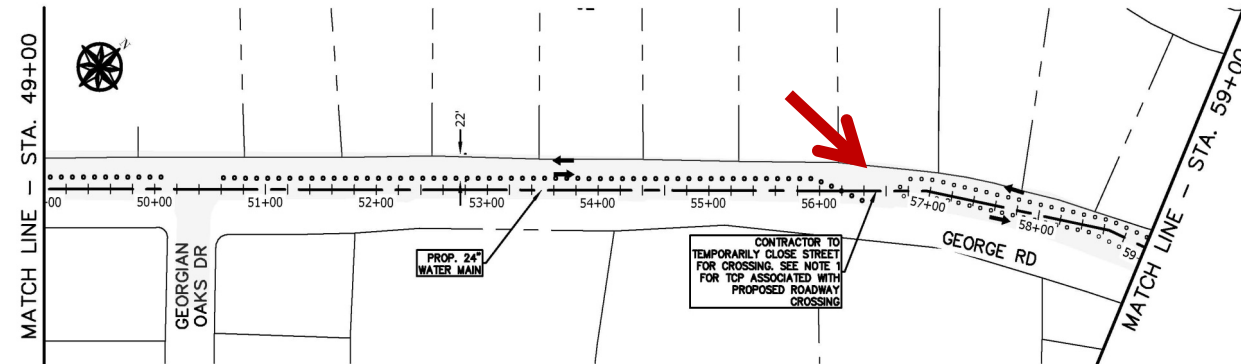
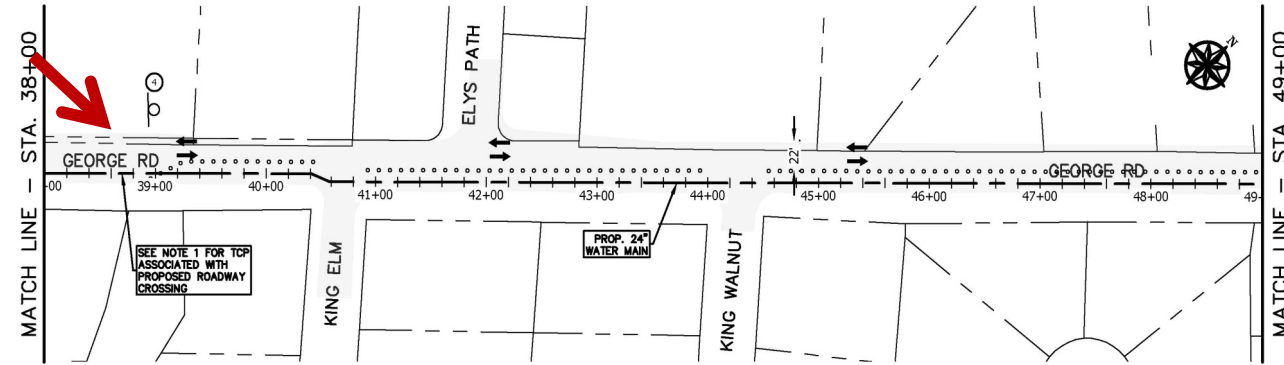
BLANCO RD. TO ORSINGER LN.
PRESSURE ZONE 1111
24-INCH WATER MAIN PROJECT
LOCKHILL-SELMA TCP LAYOUT

REV. NO.	DATE	DESCRIPTION	BY

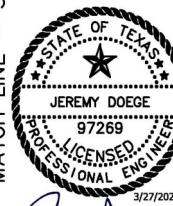
DWG. JA SUBMITTAL SANS PROJECT NO. SHEET NO.
CHK DWG. JES 100% SUBMITTAL 21-7008 C-401

TRAFFIC CONTROL

QRO MEX CONSTRUCTION



1. Will hire **Police Officer for TC purposes** when required by COSA ROW Department as part of permitting requirements and to facilitate flow of traffic at all times during construction.
2. Will sequence construction so that no more than 2 neighborhood cross streets are closed at a time.
3. **Police Officer/Flagger** will be necessary to direct **Northbound traffic on King Elm, Elys Path, King Walnut, Georgian Oaks Drive, and Hunters Bow.** Will maintain entry/exit for residents accessing their homes.
4. Shall install steel plates or backfill trenches at all street intersections at the end of each workday to maintain access to **George Road** when construction is not occurring.



LEGEND

CONSTRUCTION AREA
SIGN
PORTABLE MESSAGE BOARD SIGN
TYPE III BARRICADE
CHANNELING DEVICE
EXISTING TRAFFIC FLOW ARROW
PROPOSED TRAFFIC FLOW ARROW

REV NO.	DATE	DESCRIPTION	BY

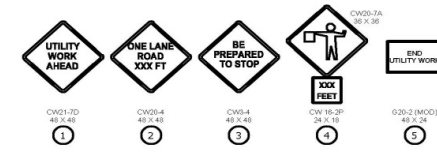
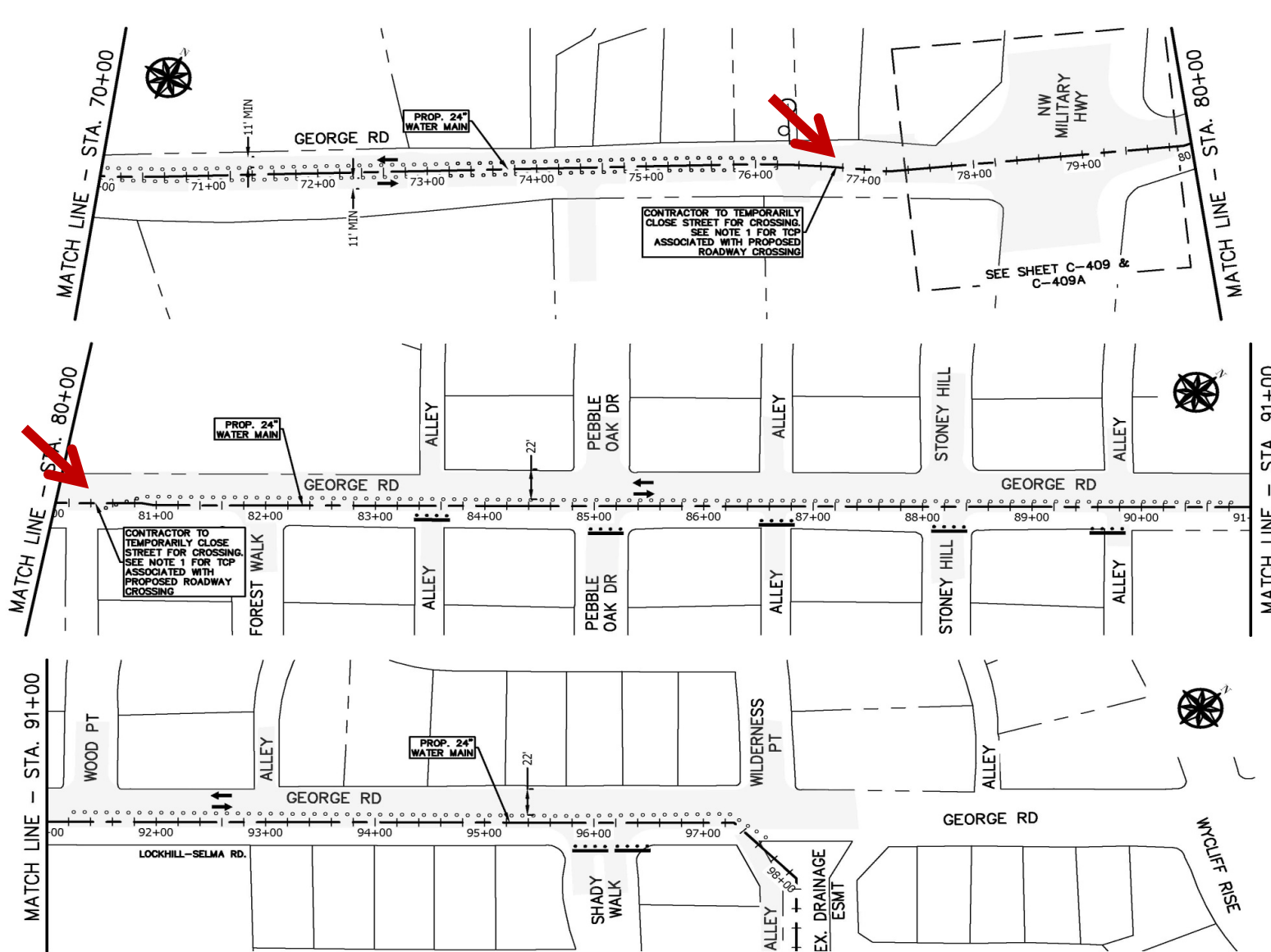
WGI
WGI Inc.
755 E. MILLBERRY AVE.,
SUITE 501
SAN ANTONIO, TEXAS 78212
PHONE 210.860.9224
FAX 210.860.9224

BLANCO RD. TO ORSINGER LN.
PRESSURE ZONE 1111
24-INCH WATER MAIN PROJECT
GEORGE RD TCP LAYOUT 1

DWG: JA SUBMITTAL SANS PROJECT NO. SHEET NO.

TRAFFIC CONTROL

QRO MEX CONSTRUCTION



1. Will hire Police Officer for TC purposes when required by COSA ROW Department as part of permitting requirements and to facilitate flow of traffic at all times during construction.
2. Will sequence construction so that no more than 2 neighborhood cross streets are closed at a time.

LEGEND

CONSTRUCTION AREA
SIGN
PORTABLE MESSAGE BOARD SIGN
TYPE III BARRICADE
CHANNELING DEVICE
EXISTING TRAFFIC FLOW ARROW
PROPOSED TRAFFIC FLOW ARROW

0 50' 100'
HORZ. 1" = 100'

STATE OF TEXAS
JEREMY DOEGE
97269
LICENSED PROFESSIONAL ENGINEER
3/27/2025

WGL
WGLinc.com
755 E MALBERRY AVE., SUITE 501
SAN ANTONIO, TEXAS 78212
FIRM NO. F-15035
210.860.9224

BLANCO RD. TO ORSINGER LN.
PRESSURE ZONE 1111
24-INCH WATER MAIN PROJECT
GEORGE RD TCP LAYOUT 2

REV. NO.	DATE	DESCRIPTION	BY

TRAFFIC CONTROL

QRO MEX CONSTRUCTION



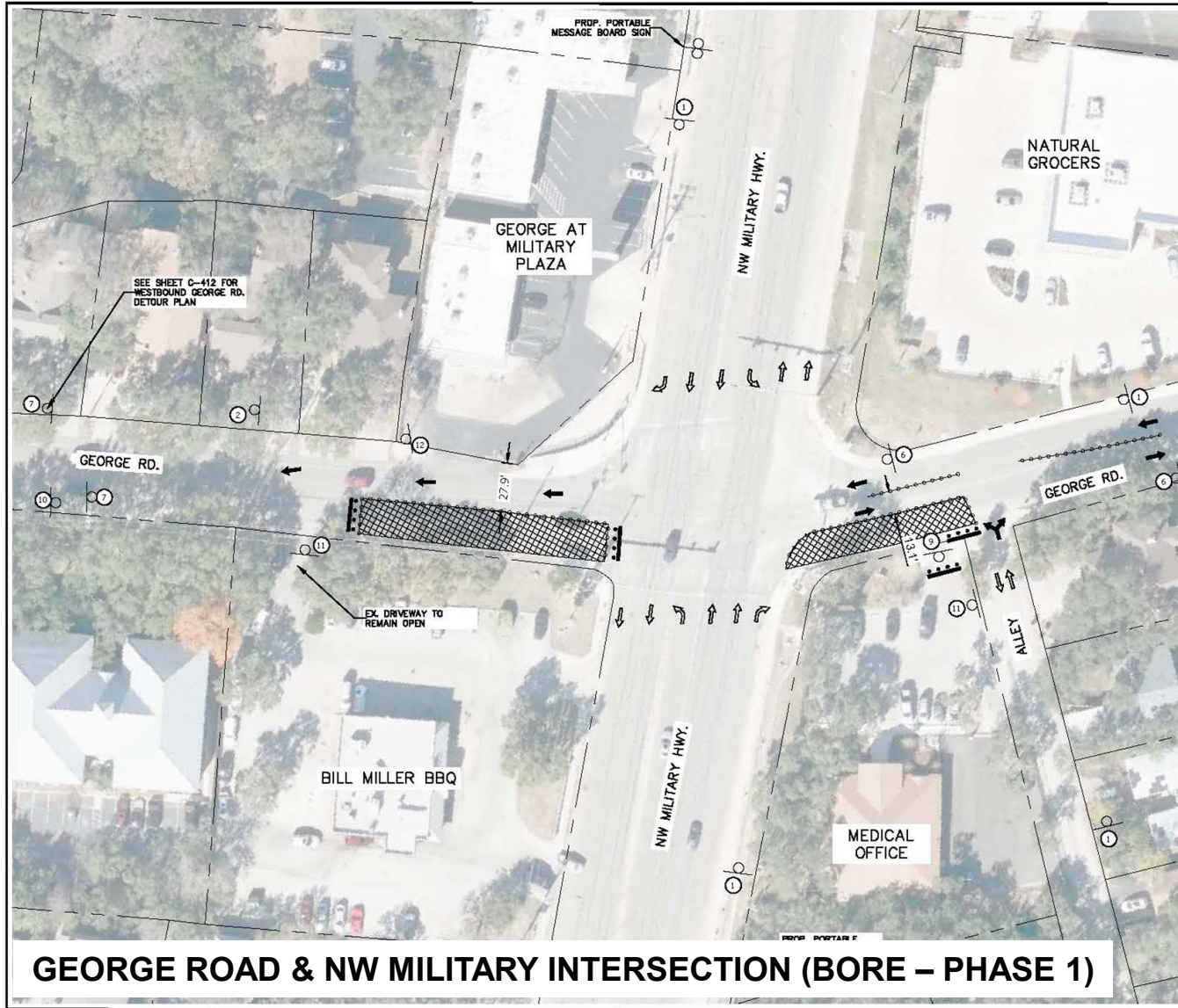
LOCKHILL SELMA & GEORGE ROAD INTERSECTION (PHASE 3)

1. Will coordinate with COSA ROW at least 30 days prior to construction to coordinate **removal/replacement of existing concrete median and install of temporary pavement to maintain two lane traffic at all times.**
2. Will allow at least one entry/exit for property owner at [3351 Lockhill Selma Road](#) at all times. Will coordinate with property owner at least 14 days prior to construction regarding access.
3. **Police Officer for TC when required** by COSA ROW Department.
4. Coordinate with City traffic operations one week before beginning any work, involving **traffic signals.**
5. For **closure of pedestrian crossings,** will provide signage and barricades to indicate closure and bag applicable heads for duration of closures.



TRAFFIC CONTROL

QRO MEX CONSTRUCTION

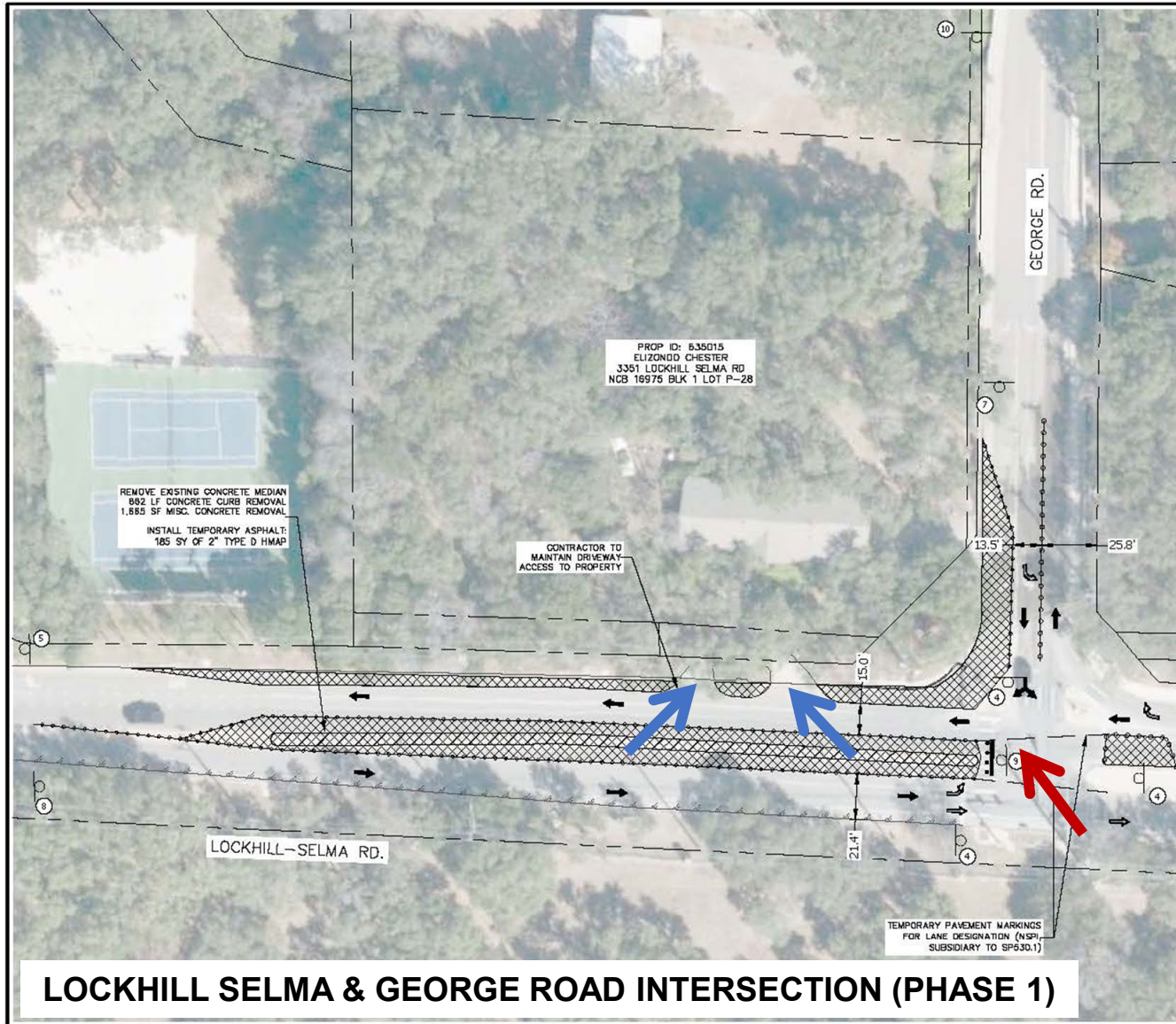


1. Residents living East of NW Military HWY are limited to one entry/exit through George Road. Will allow for two lanes of traffic at all times along George Road during construction.
2. Will coordinate with **Bill Millers BBQ, Natural Grocers, and business associated with strip mall** within 60 days prior to construction and TC, allowing at least one entry/exit to business at all times.
3. **Precision Sport & Spine** is limited to one entry/exit of George Road, with an alley East of the property; will allow entry at all times and will coordinate a minimum of 60 days prior to construction and TC.
4. **Eastbound traffic along George Road, West of NW Military, will require a detour through Lockhill Selma Road.**
5. TC plan is intended to allow continuous access to Westbound traffic through George Road across NW Military through construction.
6. Coordination with City on traffic signals.
7. For **closure of pedestrian crossings**, will provide signage and barricades to indicate closure and bag applicable heads for duration of closures.



TRAFFIC CONTROL

QRO MEX CONSTRUCTION

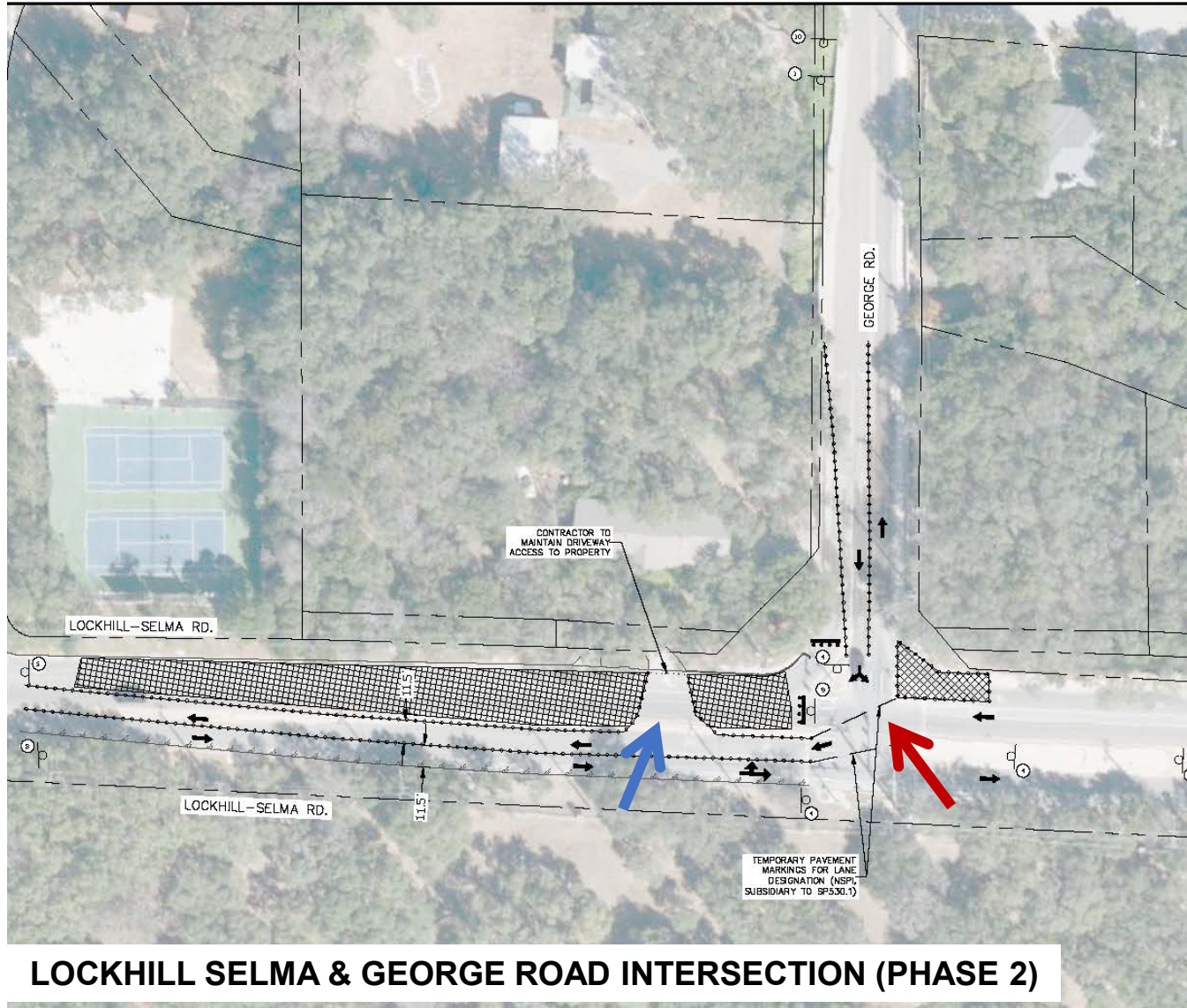


1. Will coordinate with COSA ROW at least 30 days prior to construction to coordinate **removal/replacement of existing concrete median and install of temporary pavement to maintain two lane traffic at all times.**
2. Will allow at least one entry/exit for property owner at [3351 Lockhill Selma Road](#) at all times. Will coordinate with property owner at least 14 days prior to construction regarding access.
3. **Police Officer for TC when required** by COSA ROW Department.
4. Coordinate with City traffic operations one week before beginning any work, involving **traffic signals.**
5. For **closure of pedestrian crossings**, will provide signage and barricades to indicate closure and bag applicable heads for duration of closures.



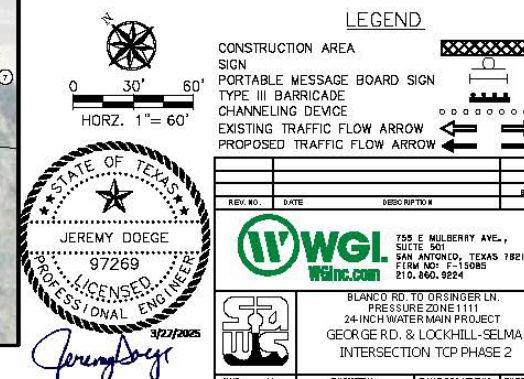
TRAFFIC CONTROL

QRO MEX CONSTRUCTION



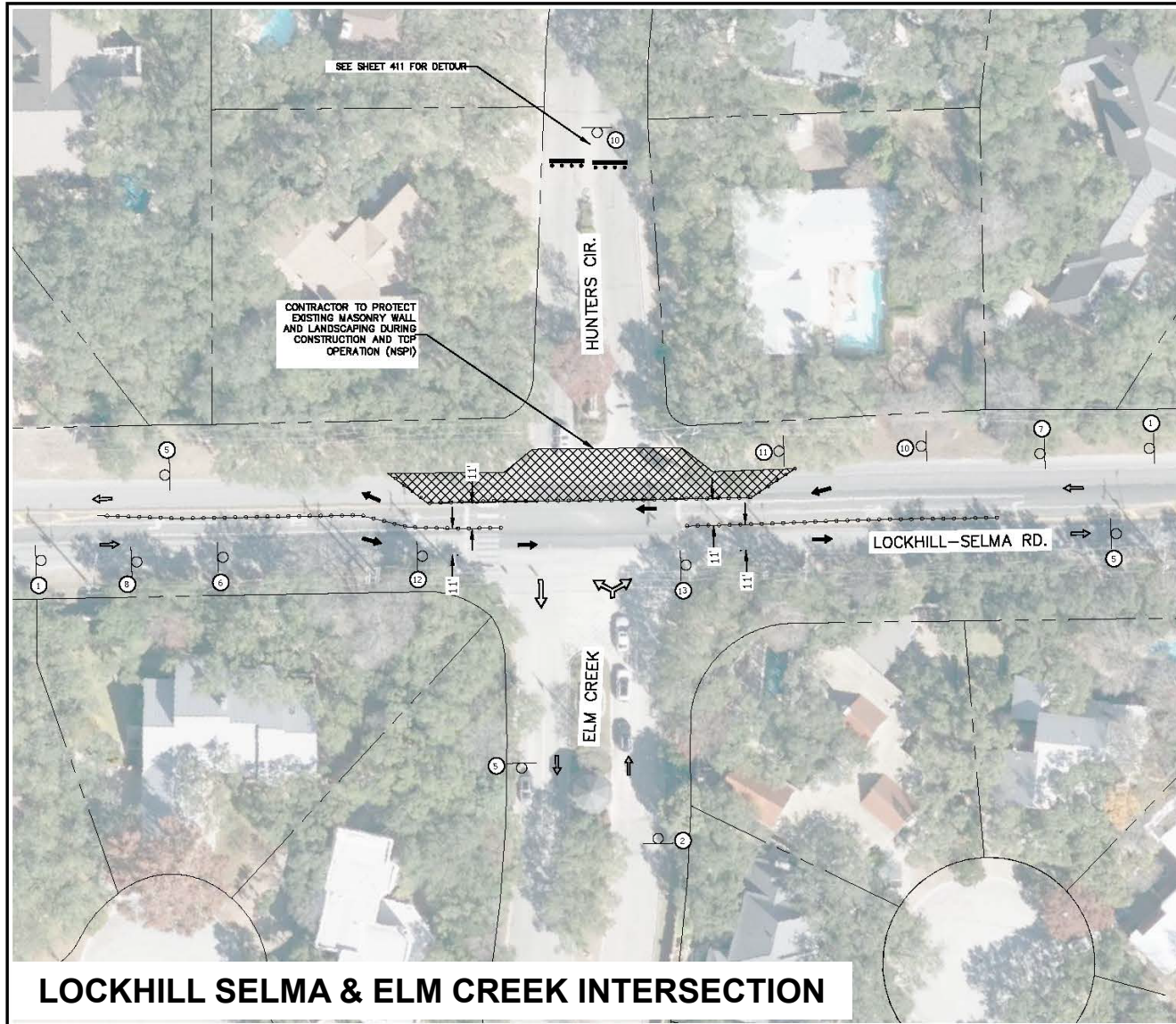
LOCKHILL SELMA & GEORGE ROAD INTERSECTION (PHASE 2)

1. Will coordinate with COSA ROW at least 30 days prior to construction to coordinate **removal/replacement of existing concrete median and install of temporary pavement to maintain two lane traffic at all times.**
2. Will allow at least one entry/exit for property owner at [3351 Lockhill Selma Road](#) at all times. Will coordinate with property owner at least 14 days prior to construction regarding access.
3. **Police Officer for TC when required** by COSA ROW Department.
4. Coordinate with City traffic operations one week before beginning any work, involving **traffic signals.**
5. For **closure of pedestrian crossings,** will provide signage and barricades to indicate closure and bag applicable heads for duration of closures.

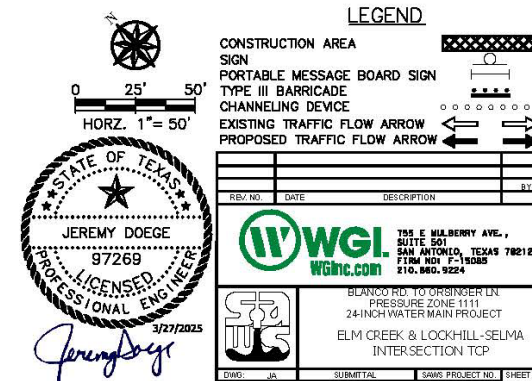


TRAFFIC CONTROL

QRO MEX CONSTRUCTION

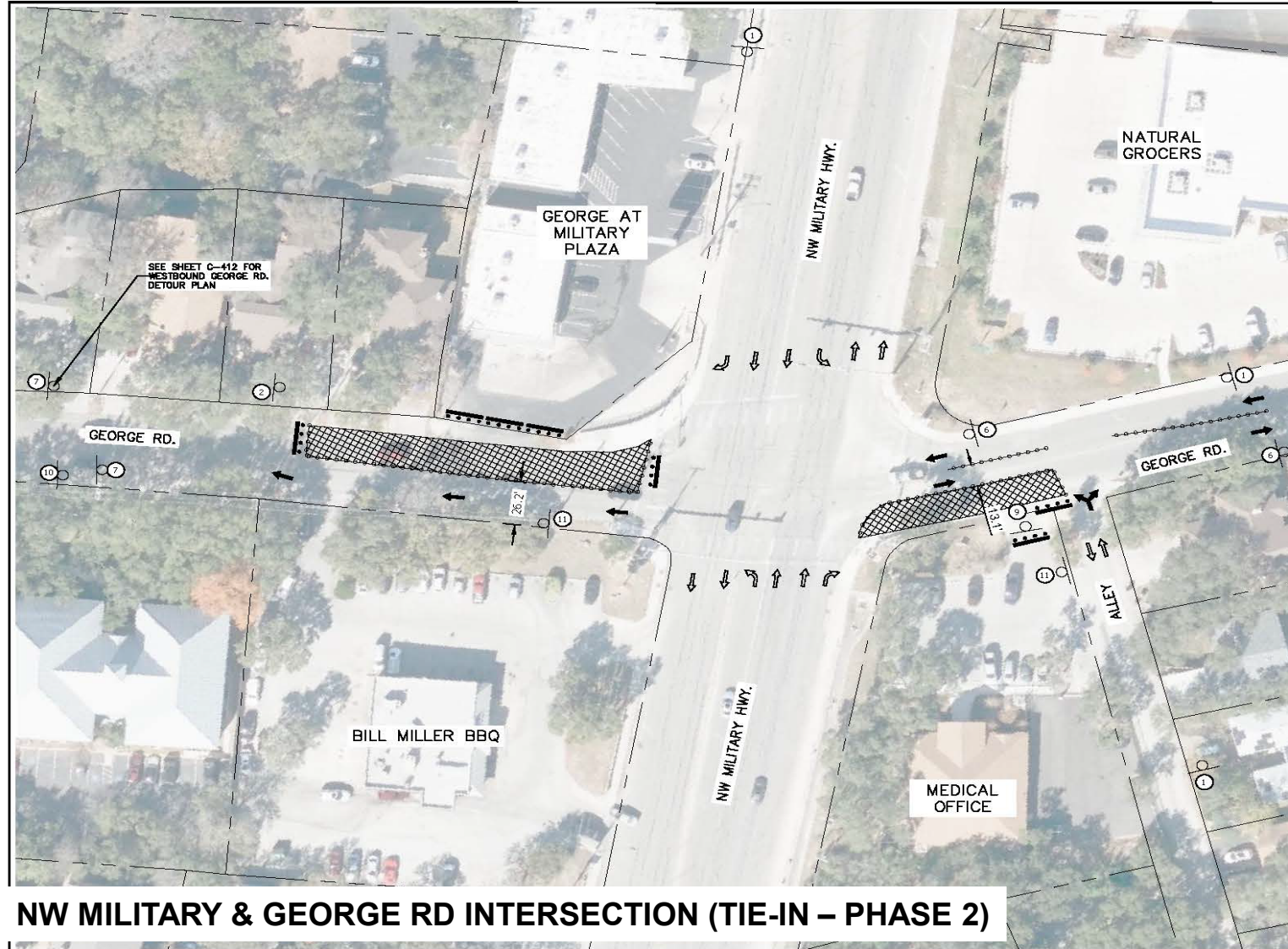


1. Will allow for two lanes of traffic at all times at Hunters Circle waterline crossing.
2. Will coordinate with Hunter Circle HOA at least 30 days in advance prior to construction and TC.
3. Traffic accessing Lockhill Selma Road off of Hunters Circle will need to be detoured through George Road for the duration of construction across the road.
4. Coordinate with City traffic operations one week before beginning any work, involving traffic signals.
5. For closure of pedestrian crossings, will provide signage and barricades to indicate closure and bag applicable heads for duration of closures.



TRAFFIC CONTROL

QRO MEX CONSTRUCTION



1. Residents living East of NW Military HWY are limited to one entry/exit through George Road. Will allow for two lanes of traffic at all times along George Road during construction.
2. Will coordinate with **Bill Millers BBQ, Natural Grocers, and business associated with strip mall** within 60 days prior to construction and TC, allowing at least one entry/exit to business at all times.
3. **Precision Sport & Spine is limited to one entry/exit of George Road, with an alley East of the property;** will allow entry at all times and will coordinate a minimum of 60 days prior to construction and TC.
4. **Eastbound traffic along George Road, West of NW Military, will require a detour through Lockhill Selma Road.**
5. TC plan is intended to allow continuous access to Westbound traffic through George Road across NW Military through construction.
6. Coordination with City on traffic signals.
7. For **closure of pedestrian crossings**, will provide signage and barricades to indicate closure and bag applicable heads for duration of closures.

SIGN
PORTABLE MESSAGE BOARD SIGN
TYPE III BARRICADE
CHANNELING DEVICE
EXISTING TRAFFIC FLOW ARROW
PROPOSED TRAFFIC FLOW ARROW

REV. NO.	DATE	DESCRIPTION	BY

755 E. MILDENBERG AVE.,
SUITE 501
SAN ANTONIO, TEXAS 78212
PHONE 210.866.9224
FAX 210.866.9224

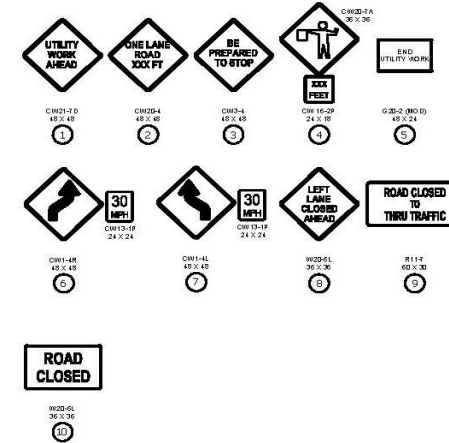
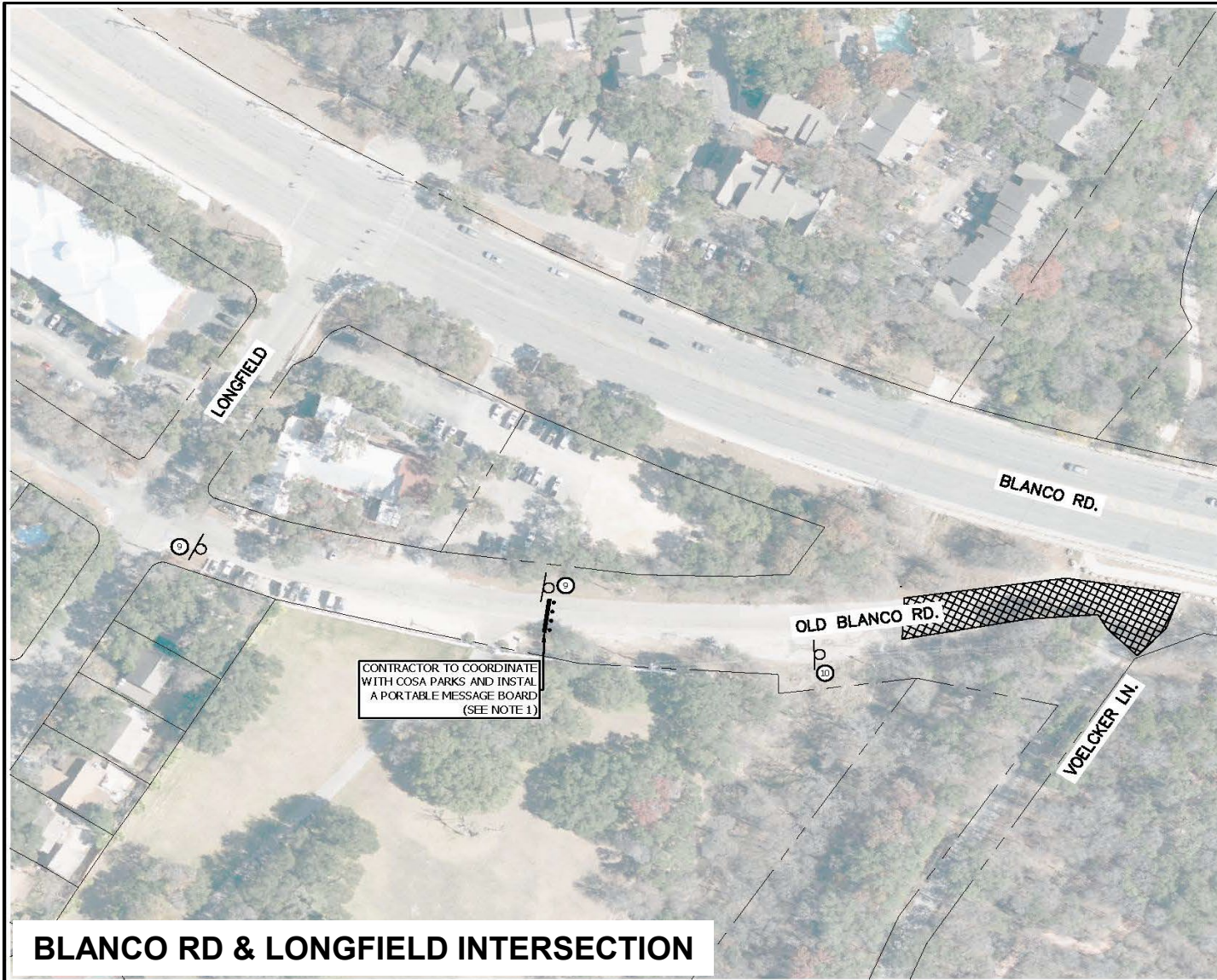
BLANCO RD. TO ORSINGER LN.
PRESSURE ZONE 1111
24-INCH WATER MAIN PROJECT
NW MILITARY & GEORGE RD.
INTERSECTION TCP PHASE 2 (TIE-IN)

DWG: JA	SUBMITTAL	SAMS PROJECT NO.	SHEET NO.
CHK: DWG. JES	100% SUBMITTAL	21-7006	C-409A

NW MILITARY & GEORGE RD INTERSECTION (TIE-IN – PHASE 2)

TRAFFIC CONTROL

QRO MEX CONSTRUCTION



1. Access to **Phil Hardberger Park Trailhead** will be restricted during construction; will coordinate with COSA Parks a minimum of 90 days prior to construction to coordinate **Voelcker Lane and Trailhead closure**.
2. Will ensure TC setup allows access to properties North of Voelcker Lane at all times.
3. Will coordinate with Blanco BBQ a minimum of 60 days prior to construction and TC setup. Will allow for commercial truck access to Blanco BBQ for deliveries at all times.

LEGEND

CONSTRUCTION AREA SIGN
PORTABLE MESSAGE BOARD SIGN
TYPE III BARRICADE
CHANNELING DEVICE
EXISTING TRAFFIC FLOW ARROW
PROPOSED TRAFFIC FLOW ARROW

0 50' 100'
HORZ. 1" = 100'

STATE OF TEXAS
JEREMY DOEGE
97269
LICENSED PROFESSIONAL ENGINEER
3/27/2025

WGL
wglinc.com
785 E MALBERRY AVE.,
SUITE 501
SAN ANTONIO, TEXAS 78212
PHONE 210-580-1500
210-580-0224

BLANCO RD. TO ORSINGER LN.
PRESSURE ZONE 1111
24-INCH WATER MAIN PROJECT
OLD BLANCO & LONGFIELD
INTERSECTION TCP

REV. NO.	DATE	DESCRIPTION	BY

DWG: JA SUBMITTAL SAMS PROJECT NO. SHEET NO.



Edgar Segovia, P.E.

Edgar.Segovia@WGInc.com



Sirahuen Guajardo, P.E.

Sirahuen.Guajardo@SAWS.org



Aurelio Nigoche, PM

Anigoche.QroMex@gmail.com

