

January 20, 2026

2026 Capital Improvement Program

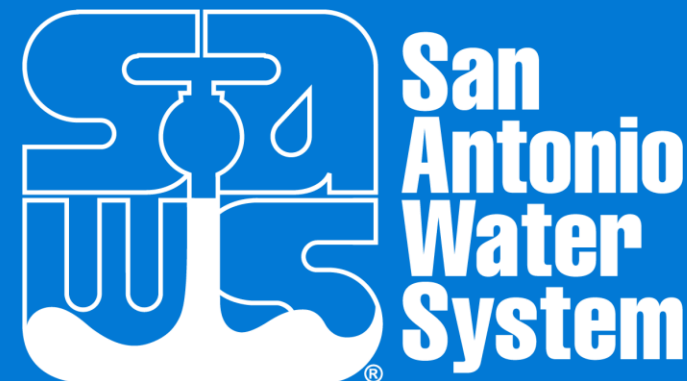
Thomas Graham

Manager – Project Controls

Marisol Robles

Director – Business Engagement and Contract Compliance

2026 Capital Improvement Program



Safety

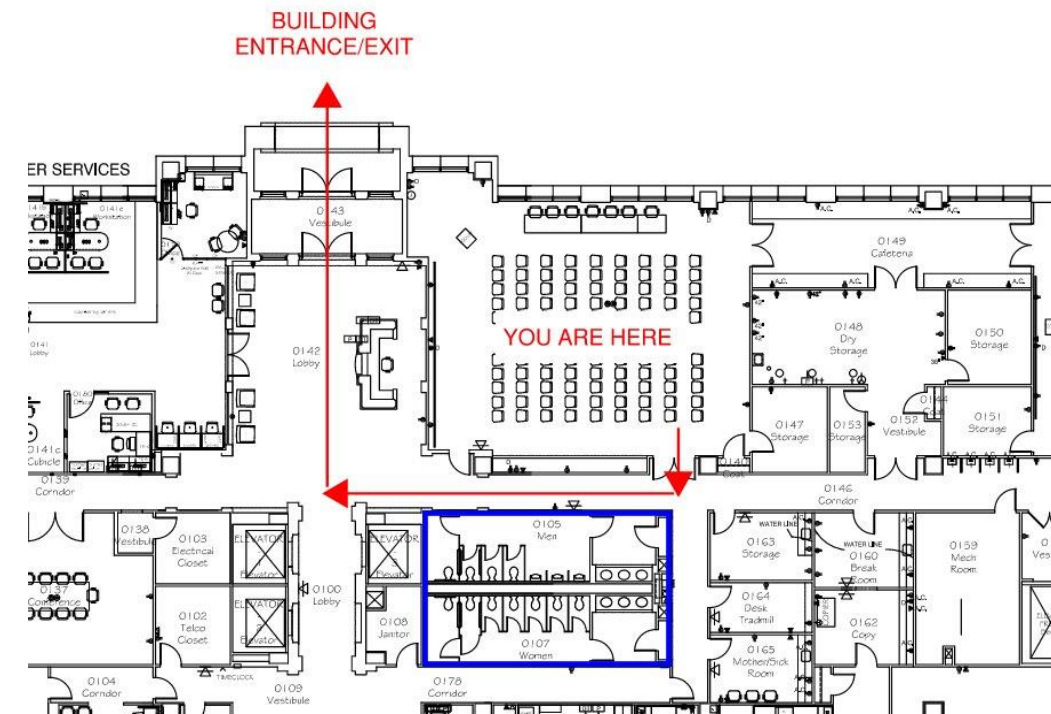
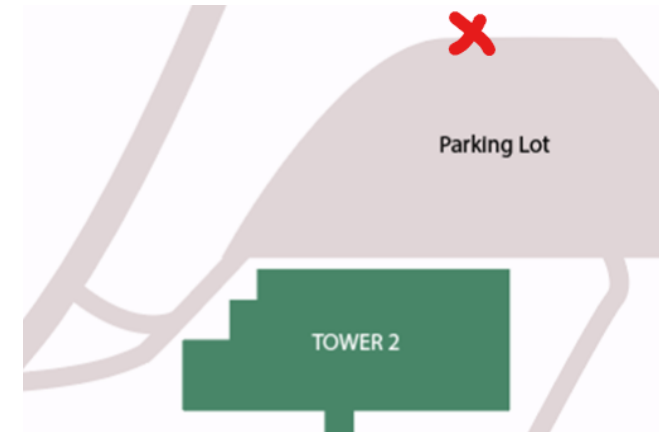
Housekeeping

- Tower 2 Emergency Egress
- Restrooms
- Phones on silent

Safety Culture

If you **see something** you think looks unsafe, **say something!**

- Our goal is for everyone to go home safely each day!

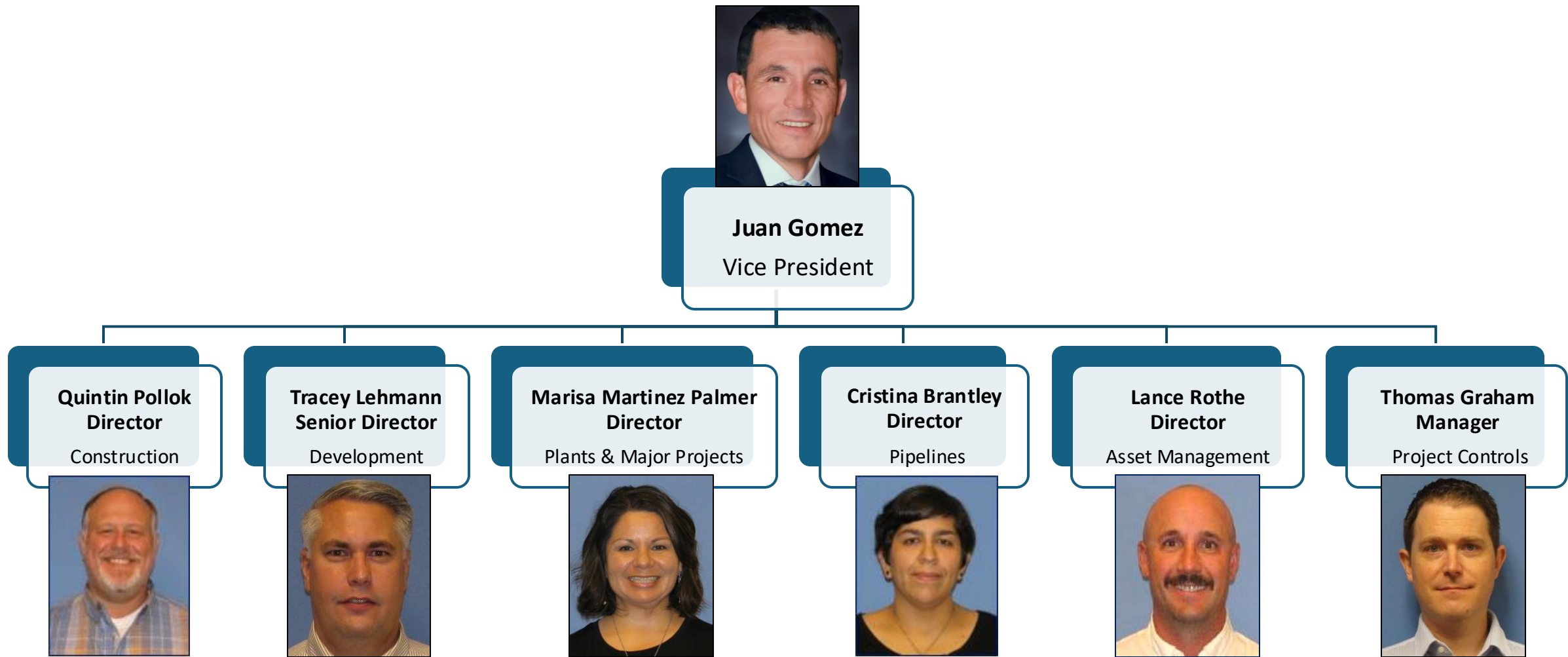


2026 Capital Improvement Program

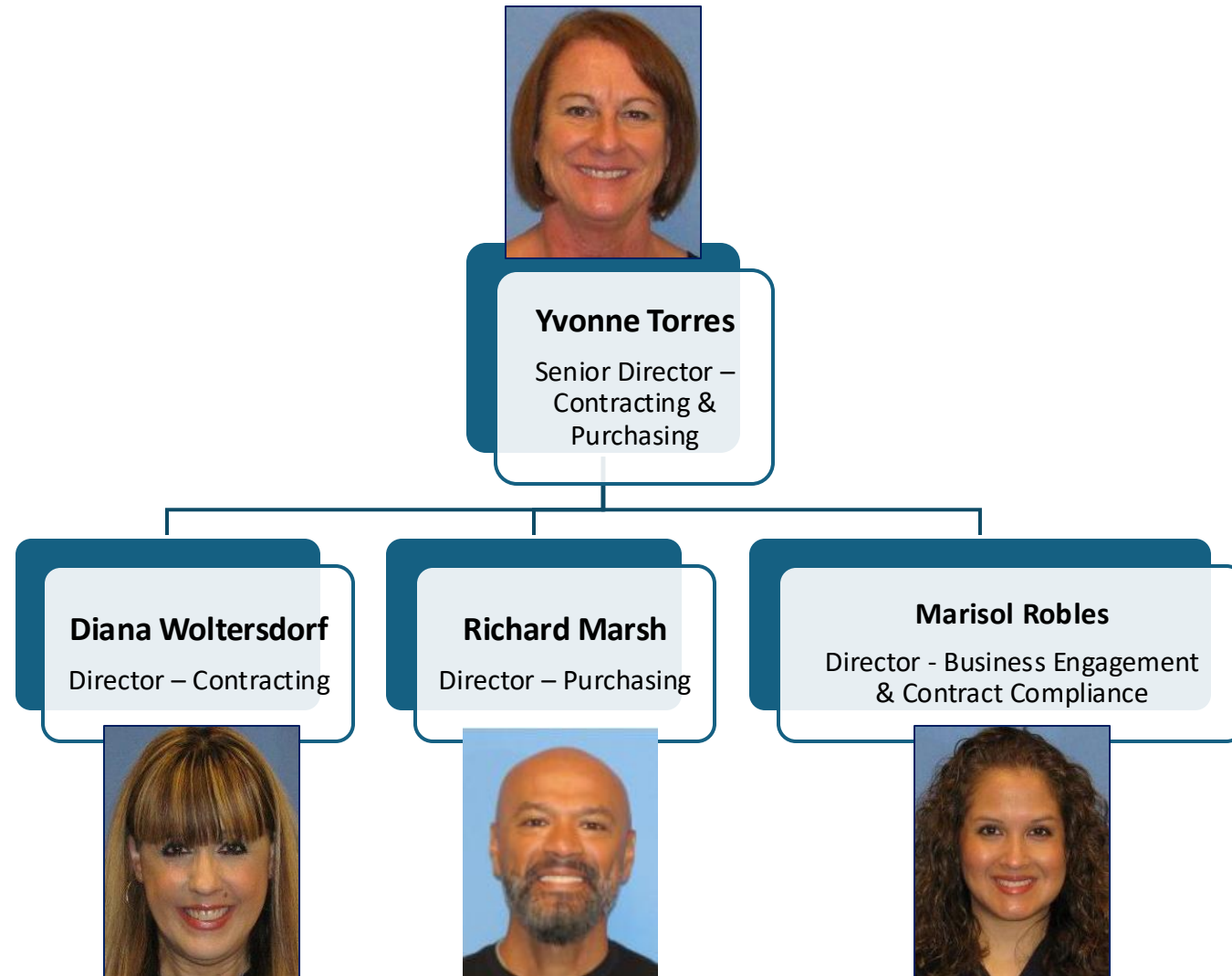
Today's Agenda

- SAWS Teams
- CIP Planning
- 2026 CIP
 - Interim Budget
 - Proposed Budget Amendment
- Key Projects and Programs
- Growing SAWS-Consultant Partnership
- Small Business Opportunities Program

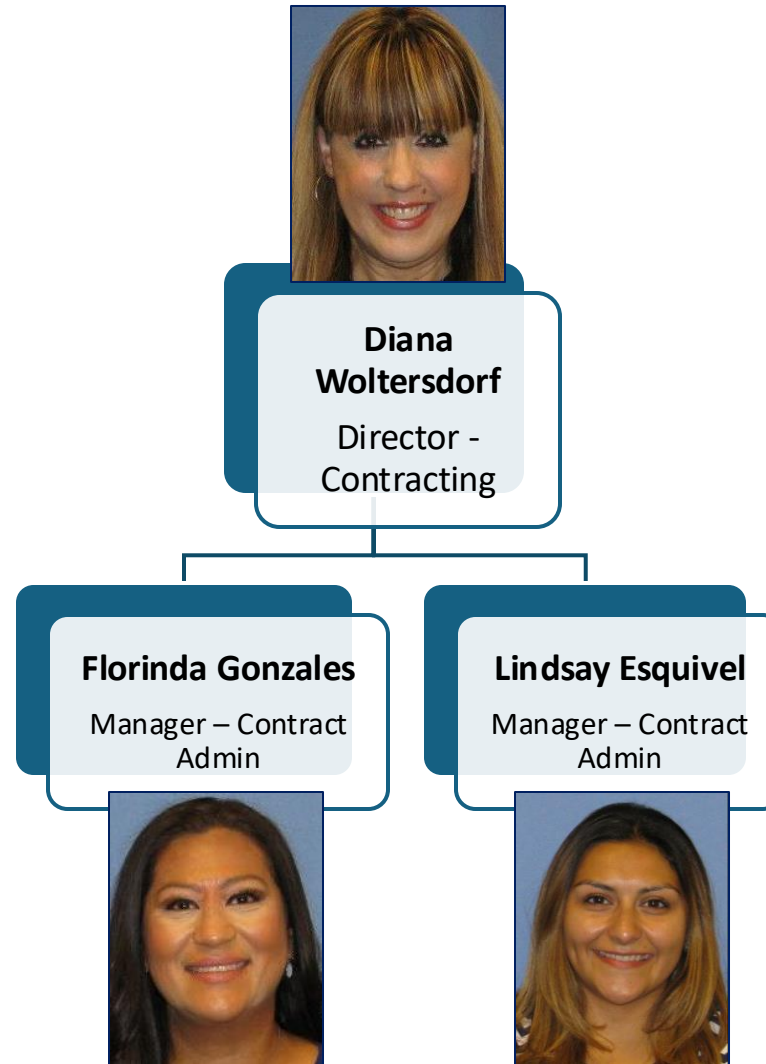
Engineering and Construction Group



Contracting & Purchasing Department



Contracting Department



Capital Improvement Program Planning

Our Mission

Sustainable, **Affordable Water Services**

Planning Documents & Master Plans

- Assist in identification of:
 - Infrastructure needs
 - Critical scope
 - Projects
 - Timelines / Sequencing
 - Constructability
 - Budgets (Five-Year plan, 10-Year plan)



Driving Successful Outcomes

Assets in Service for our Community

Scope → Define and maintain

Schedule → Deadlines matter

Budget → Maintain during design

Quality → Attention to detail

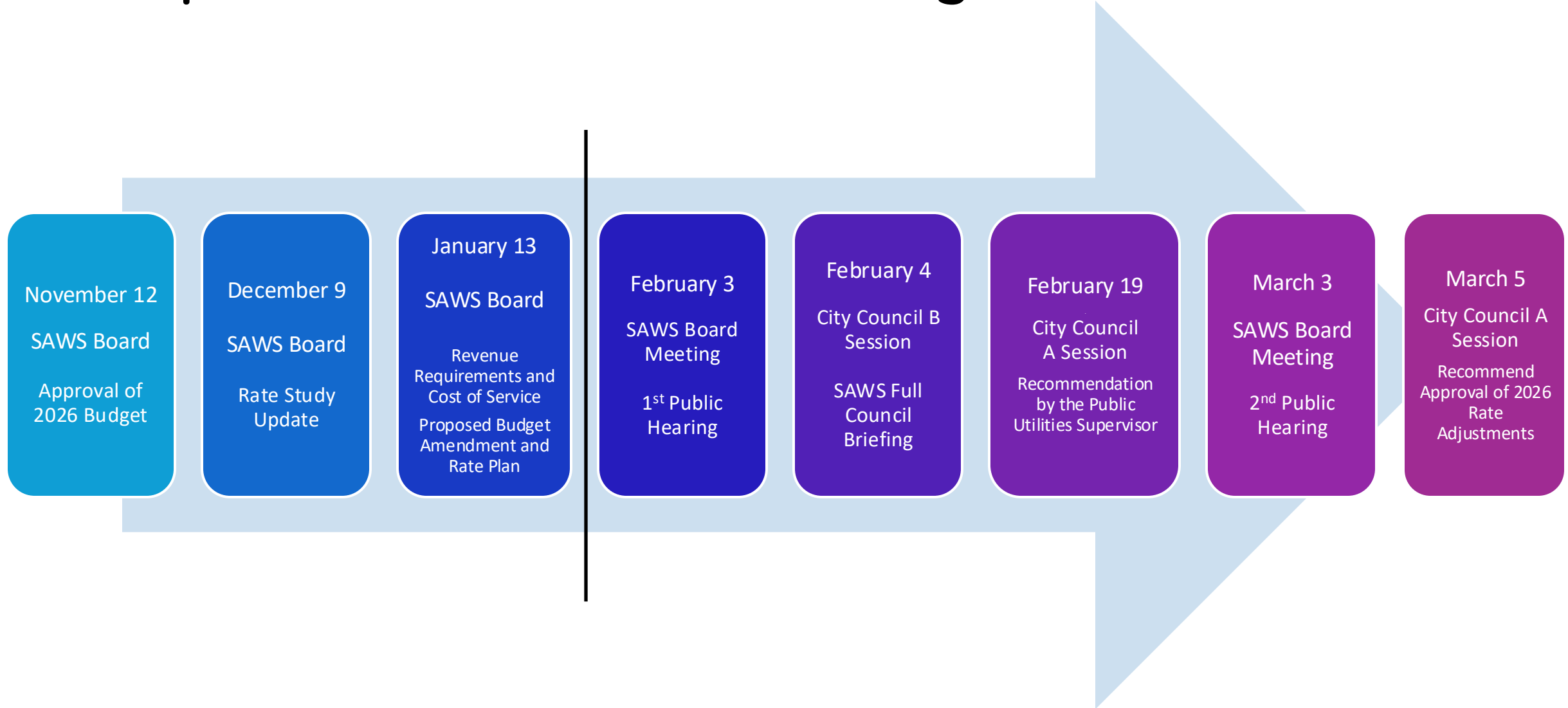


2026 Capital Improvement Program

Planning and Budgeting

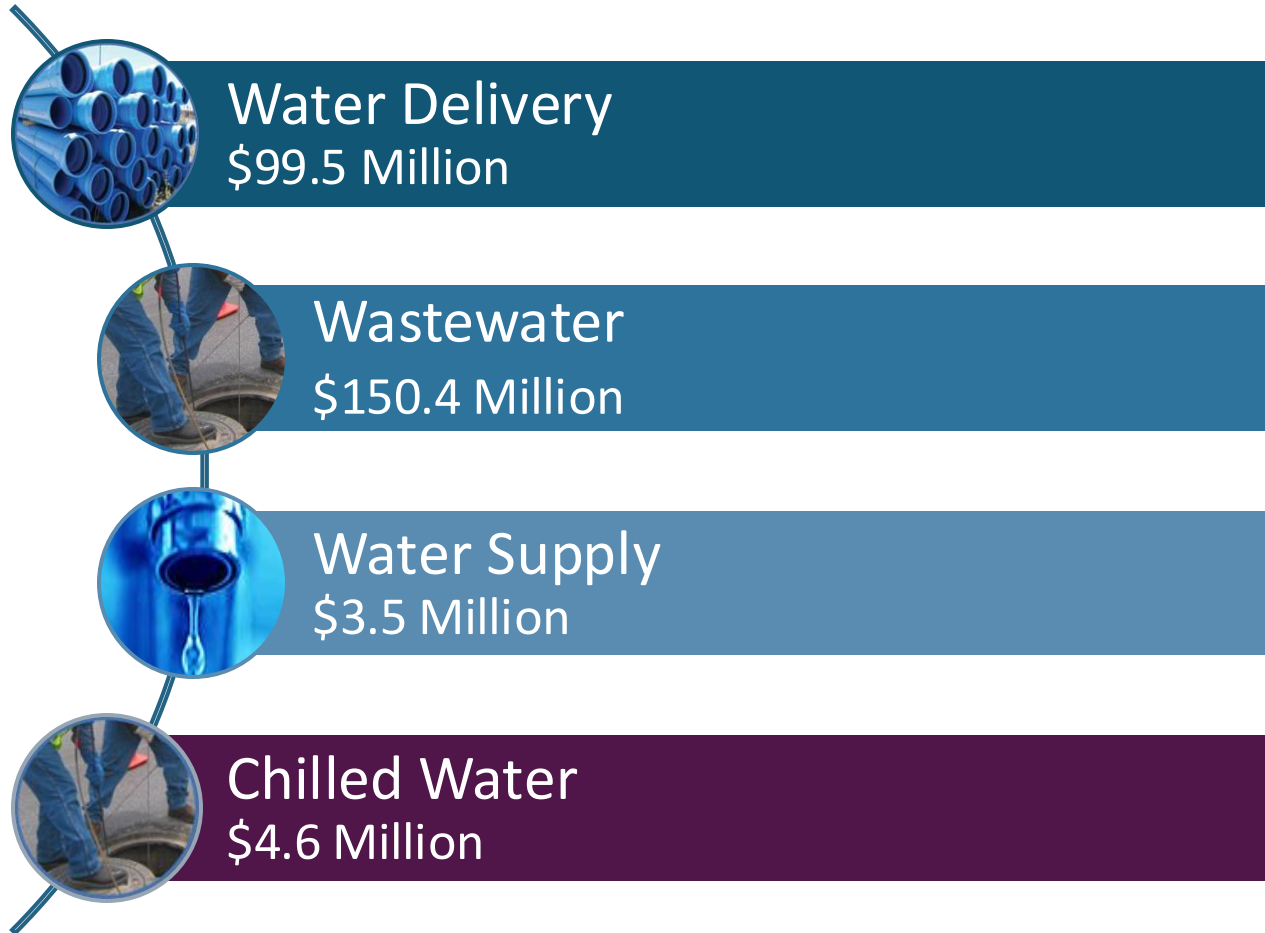
- Planning began early 2025
- Align with SAWS Strategic Goals and Executive Priorities
- Risk and consequence of failure evaluated
- Proposed 2026 CIP budget of \$607M
 - Interim Budget approved by the Board in November 2025
 - Contemplates partially funded 2026 CIP
 - Rate study and rate case to fully fund 2026 CIP budget

Proposed 2026 Amended Budget Timeline



2026 CIP – Interim Budget

By Core Business

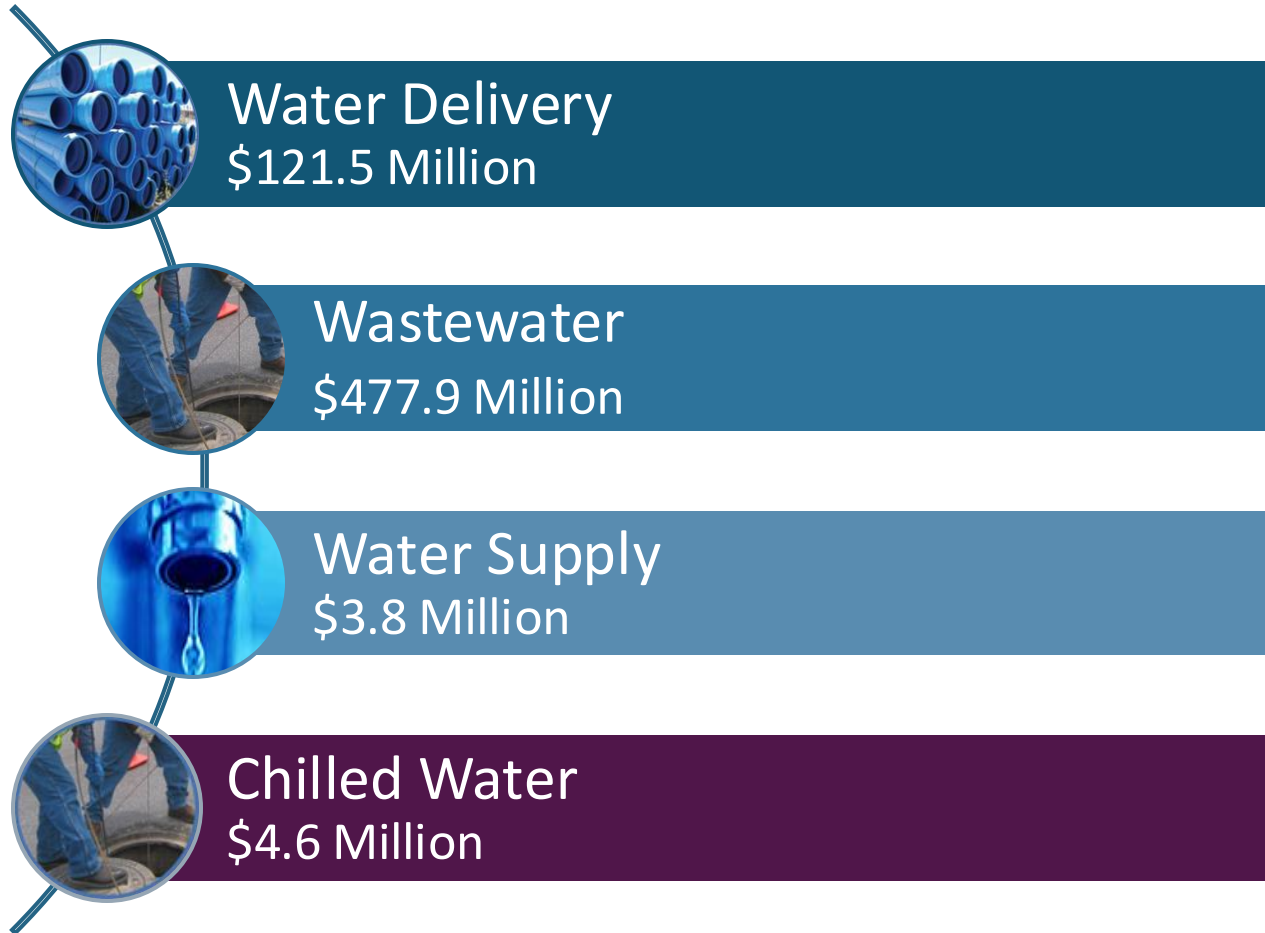


TOTAL
\$258.0M

Adopted November 2025

2026 CIP – Proposed Budget

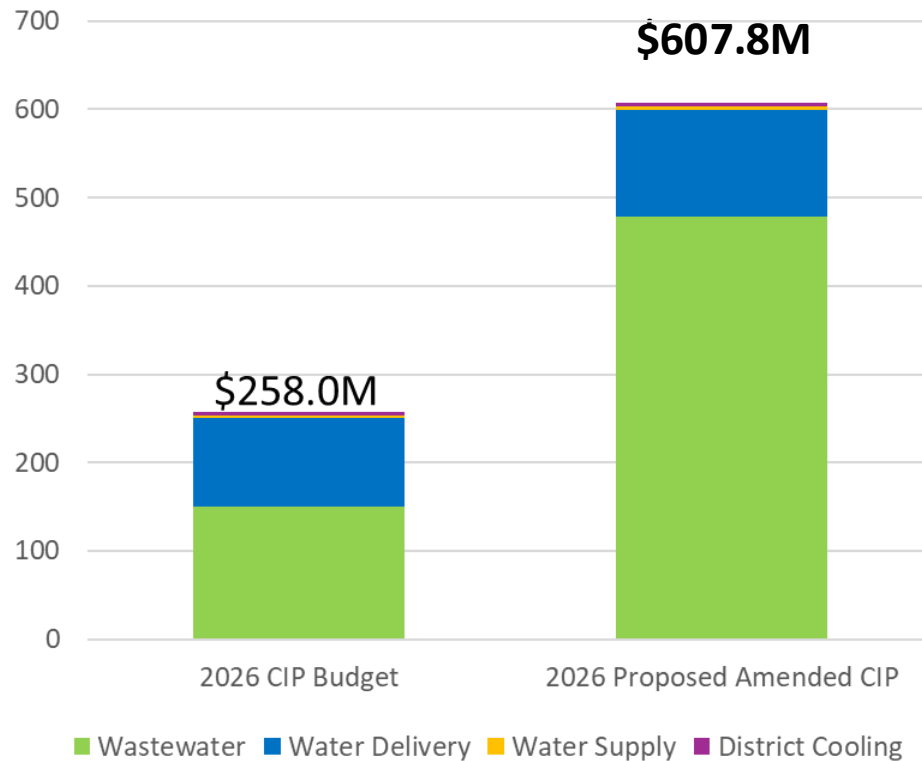
By Core Business



TOTAL
\$607.8M*

*Proposed budget

2026 CIP Proposed Budget Amendment



Wastewater Additions – \$327.5M

- Treatment Rehab Projects – \$254.1M
- Main Replacements Including Governmental – \$38.7M
- Inflow & Infiltration – \$20.7M
- New Mains, Corporate & Other – \$14.0M

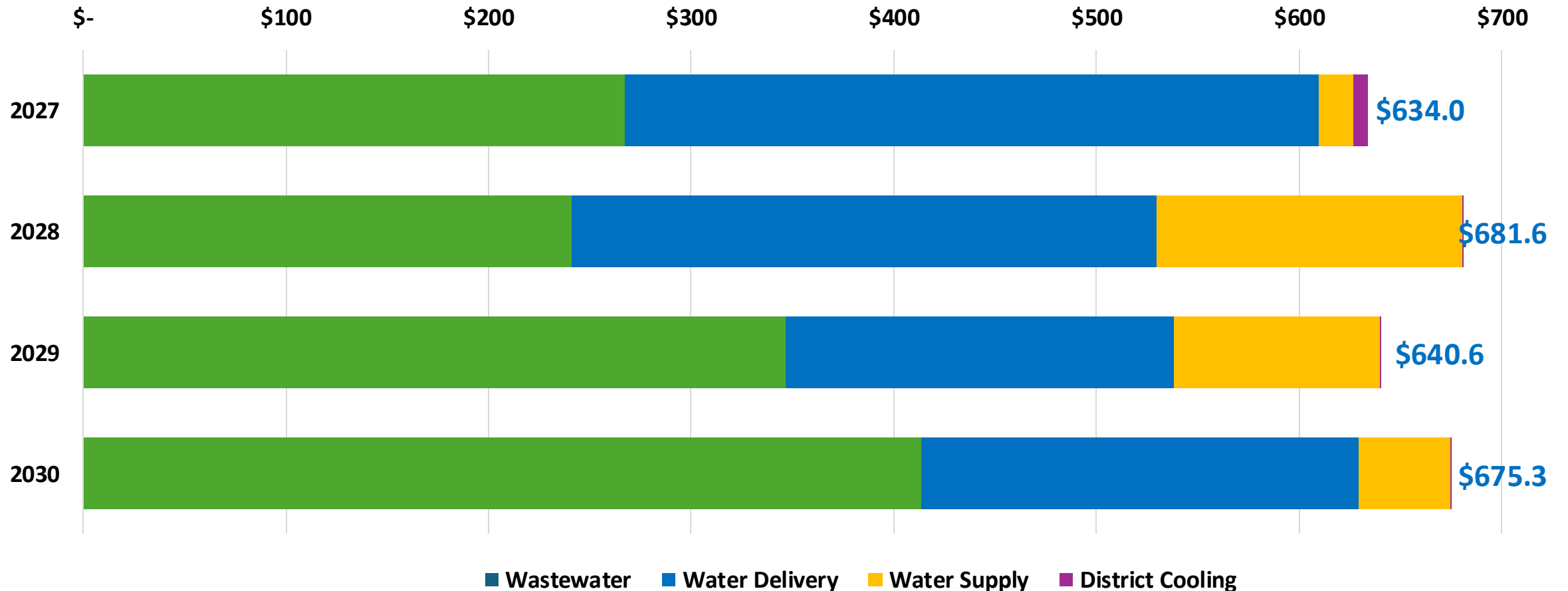
Water Delivery Additions – \$22.0M

- Governmental Water Mains & Other – \$22.0M

2027 - 2030 CIP Forecast*

\$2.6 Billion

\$ in millions



* Does not include any District Cooling expenditures to relocate and expand Commerce plant in support of Project Marvel

2026 CIP – Interim Budget

Design

- Redland Rd New Water Transmission Main

SAWS Corporate

- Distribution & Collection Operations
 - Water and Sewer Main Replacement
 - Valves, Services and Meter Replacement
 - Sewer Laterals
- Overhead, OCCC, and Legal Services

Construction

- Leon Creek WRC Hydraulic and Solid Improvement
- Water Main Replacement Program
 - Projects designed in 2024
- 2023 Sewer Main Replacement Project 2 (Awarded 12/2025)
- Governmental Sewer, Water and Recycled Water
- Chilled Water Projects

2026 CIP Proposed Budget Amendment

Projected Board Approval in Q2 2026

Design

- Water Main Replacement Engineering Contracts
- Cibolo Canyon LS Elimination and Relief Line
- Inflow and Infiltration Reduction
- Lift Station Rehabilitation Phase 6
- Acequia Lift Station Rehabilitation

Construction

- Steven M. Clouse WRC Projects
 - Rehabilitation Phase 1
 - Biosolids System Upgrades
- 2023 Sewer Main Replacement Project 1A and Project 2A
- 2022 Inflow Reduction Project 2A and Project 2B
- Fully fund Governmental Sewer, Water and Recycled Water



Design - Pipelines

Water Delivery

- Redland Rd Water Main (New Main)
 - Targeting advertisement Q2
- Water Main Replacement Engineering Contracts *
 - RFQ award Q3/Q4

Wastewater

- Cibolo Canyon LS Elimination and Relief Line (E-54 Phase 2)*
- Inflow and Infiltration Reduction*

*Proposed Budget Amendment

Redland Rd. – New Water Transmission Main

Design



- Upsize approximately 12,000 feet of 24-inch transmission main
- Connecting the existing 24-in main on Encino Ledge to the existing 48-inch main on Bulverde Rd.
- Provides redundancy to the area

Engineering Work Order Contracts

- 2026 Governmental Engineering Design Service Contracts
 - Projects with Bexar County & other cities, CoSA, TxDOT and other agencies
 - Budget includes Water Mains, Sewer Mains, and Recycled Water
- Inflow and Infiltration (I/I) Reduction





Design – Plants and Major Projects

Water Delivery

- Production Facilities Engineering Work Order Contracts
 - Considered in Budget Amendment

Wastewater

- Lift Station Rehabilitation Phase 6
- Acequia Lift Station Rehabilitation
- SMCWRC Rehab Phase 2
- Treatment Facilities Engineering Work Order Contracts
 - Considered in Budget Amendment

How can you as a Consultant or Subconsultant help?

Plants and Major Projects

- Use SAWS Div 1/1000 Specs – tailored to project
- Use SAWS Standard CSI Spec List, beyond Div 1/1000
- Front Ends – SAWS PM with input from Consultant
- Updates to Lift Station Guidelines – Developer Projects
- Developing Electrical Standards
- Updates to SAWS website – guidelines, details, etc.
- Equipment List and “approved” vendors
- Leveraging 30% Design – PER contents, evaluation of alternatives, cost, risk, lead times, permits, contractor pool, special inspections

Plants and Major Projects

- Outreach to contractors during design – multiple times for various reasons, more detailed earlier in design
- Emphasis on “Assets in Service”
- Problem solving approach
- Construction support – intentional in-person progress meetings, critical submittals, attention to schedule, visual monitoring of progress, field presence, commissioning and testing
- Support contractors – critical equipment, submittal process, RFIs and decision making, solve problems, sense of urgency

Construction

- Initiation of Division 1/1000 Specifications for pipeline projects
- Initiation of Substantial Completion milestone for pipeline projects
- Sense of urgency and problem solving – time is of the essence
- Clear direction/expectations of contractor in Contract Documents
- Remove “generic” and “catch all” type of notes from plan sheets
- Intentional construction progress meetings - meaningful conversations
- Separate Liquidated Damages for Substantial and Final Completion
- Accurate pay applications, redlines and schedule reviews

Pipelines

- Inclusion of Substantial Completion milestone for Pipeline projects
- Separate Liquidated Damages for Substantial and Final Completion
- Understanding impact of projects to System Operations
 - Shutdowns
 - Planning ahead: Valves, temp. water mains, addition of line items, etc.
- Early coordination for project overlaps (internal and external – CoSA, County, TxDOT, etc.)
- Project specific Contractor Outreach – early and often
- Community outreach/Council coordination
- Focus on Budget and financial impact of design decisions

Asset Management

Asset Data File Format Requirements

- Asset data for projects are required to be submitted in a GIS file format
- Data requirements and standards for submittals will be posted on SAWS website
- Conformed drawings and As-builts will need to be submitted in the following formats
 - CAD Format: AutoCAD (.dwg) or MicroStation (.dgn). CAD files must be compatible with both AutoCAD and MicroStation.
 - GIS format: Esri File Geodatabase (FGDB) or Shapefile (.shp)
 - PDF

Asset Management

CSI Format for Construction Specifications – Vertical Assets

- SAWS developed a naming convention guideline
- Follows the Construction Specification Institute (CSI) number
- Consultants will be required to use the ***SAWS Specific*** CSI numbering for vertical assets
- Language will be included in the Consultants Scope
- The CSI naming and numbering guideline will be posted on the SAWS website

Asset Management

Spatial Requirements

- Overall utility layout plan must be in real world (ground) coordinates
- Horizontal control points shall be provided
- A minimum of two (x,y) coordinates will be required on all jobs

Project Controls

- Communicate anticipated changes to scope, schedule and budget early
- Project budget – CIP Plan
- Ensure field conditions align with design plans and scope
- Schedule adherence and recovery schedules – design phase
- Identify project risks and challenges and ensure team is aligned – solutions?
- Avoid deviating from scope during construction
- Timely responses to RFIs and Submittals to maintain schedule
- Help facilitate timely project close out
 - Fast turn around on Final As-Builts and final invoicing
 - Record Asset IDs and Compkeys on all 100% Design Plans and Final As-Builts
 - Confirm Post-Con CCTV is reviewed and that it conforms to SAWS specifications

SAWS CIP – Additional Resources

- General information on doing business with SAWS
 - <https://www.saws.org/business-center/>

SAWS Contract Opportunities

Contract Solicitations

Business Center

Contract Solicitations

Login

Update Your Account

Archive

Bid Opening Results

Bid Tabs

Forms

Contract & Project Management System

Future Contract Opportunities

Procurement Bids

Construction & Materials

Contract Solicitations

Vendors are invited to submit proposals for various contracts seeking goods and services, and view current invitations to bid. Register for access to new contract opportunities, planholders lists, and more.

[Register Now >](#)

San Antonio Water System is accepting submissions until the closing date:

Results **1 - 18** of **18**

Type	Solicitation No.	Job No.	Project Name	Due Date	Update	Details
------	------------------	---------	--------------	----------	--------	---------

Vendors & Contractors Login

Email

Password

[Forgot Password](#)

Sign In

Contact Information

Name	Title	Department	E-mail	Phone
Quintin Pollok	Director	Construction	Quintin.Pollok@saws.org	210-233-3677
Carlos Fermaintt	Manager	Construction Administration	Carlos.Fermaintt@saws.org	210-233-3611
Kurtis Anderwald	Manager	Construction Administration	Kurtis.Anderwald@saws.org	210-233-2416
Angel Morales	Manager	Construction Administration	Angel.Morales-Vazquez@saws.org	210-233-3754
Uma Ande	Manager	Construction Administration	Uma.Ande@saws.org	210-233-3828
Richard Ker	Manager	Construction Inspections	Richard.Ker@saws.org	210-233-3584
Michael Villanueva	Manager	Construction Inspections	Michael.Villanueva@saws.org	210-233-3604
William Guzman	Manager	Construction Inspections	William.GuzmanJr@saws.org	210-233-3084
Cristina Brantley	Director	Pipelines	Cristina.Brantley@saws.org	210-233-3865
Nina Bittle	Manager	Pipelines	Nina.Bittle@saws.org	210-233-3461
Ann Peche	Manager	Pipelines	Ann.Peche@saws.org	210-233-3891
Joshua Garcia	Manager	Pipelines	Joshua.Garcia@saws.org	210-233-3693

Contact Information

Name	Title	Department	E-mail	Phone
Marisa Palmer	Director	Plants and Major Projects	Marisa.Palmer@saws.org	210-233-3695
Ismael Rosales	Manager	Plants and Major Projects	Ismael.Rosales@saws.org	210-233-3705
Hari Ponnekanti	Manager	Plants and Major Projects	Hari.Ponnekanti@saws.org	210-233-2352
Saqib Shirazi	Manager	Plants and Major Projects	Saqib.Shirazi@saws.org	210-233-3840
Lance Rothe	Director	Asset Management	Lance.Rothe@saws.org	210-233-3607
Kathleen Price	Manager	Asset Management	Kathleen.Price@saws.org	210-233-3446
Tracey Lehmann	Director	Development	Tracey.Lehmann@saws.org	210-233-3492
David Garcia	Manager	Development	David.Garcia2@saws.org	210-233-3288
Thomas Graham	Manager	Project Controls	Thomas.Graham@saws.org	210-233-3321
Diana Woltersdorf	Director	Contracting	Diana.Woltersdorf@saws.org	210-233-3372
Lindsay Esquivel	Manager	Contracting	Lindsay.Esquivel@saws.org	210-233-3409
Florinda Gonzales	Manager	Contracting	Florinda.Gonzales@saws.org	210-233-3914

January 20, 2026

2026 Capital Improvement Program

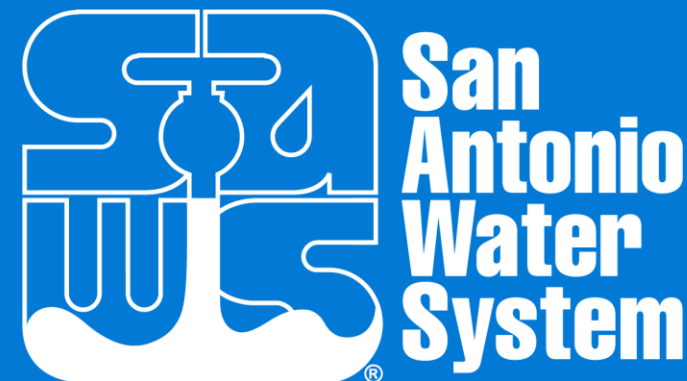
Thomas Graham

Manager – Project Controls

Marisol Robles

Director – Business Engagement and Contract Compliance

2026 Capital Improvement Program



January 20, 2026

Small Business Opportunities Program (SBOP)

Marisol V. Robles

Director of Business Engagement and Contract Compliance

2026 Capital Improvement Program Kickoff Meeting



SBOP Eligibility

- Relevant Marketplace:
 1. Bexar, Comal, Guadalupe, Hays, Kendall, Travis, and Williamson
- Certification:
 1. Small Business Enterprise Certification (SBE)
 2. SCTRCA dba Supply SA (www.sctrca.org)
- Eligible companies must be certified prior to participating in the Program

Aspirational SBOP Goal

- Up to 15 Points
- Must meet SBOP eligibility criteria
- SBE-certified consultants: Firm's own participation
- Non-SBE consultants: Sub-consulting

Post-Award Compliance: Construction

Subcontractor Payment and Utilization Reporting (SPUR) System

SPUR System: Payment reporting for all subconsultants

1. Post-award additions or replacements
2. All tiers of subconsultants
3. Consistent payment reporting & communication

SBOP Support

Roxanne Eguia	Marisol V. Robles	Susan M. Rodriquez
SBOP Specialist	Dir., Business Engagement & Contract Compliance	Senior SBOP Specialist
Roxanne.Eguia@saws.org 210-233-3980	Marisol.Robles@saws.org 210-233-3420	Susan.Rodriquez@saws.org 210-233-3070

Call or email anytime during business hours with questions or meeting/training requests

Standing SBOP Support Hour on the last Tuesday of each month at 2:30 p.m. Contact SBOP staff to join

January 20, 2026

Small Business Opportunities Program (SBOP)

Marisol V. Robles

Director of Business Engagement and Contract Compliance

2026 Capital Improvement Program Kickoff Meeting



Thank you for your attendance!

