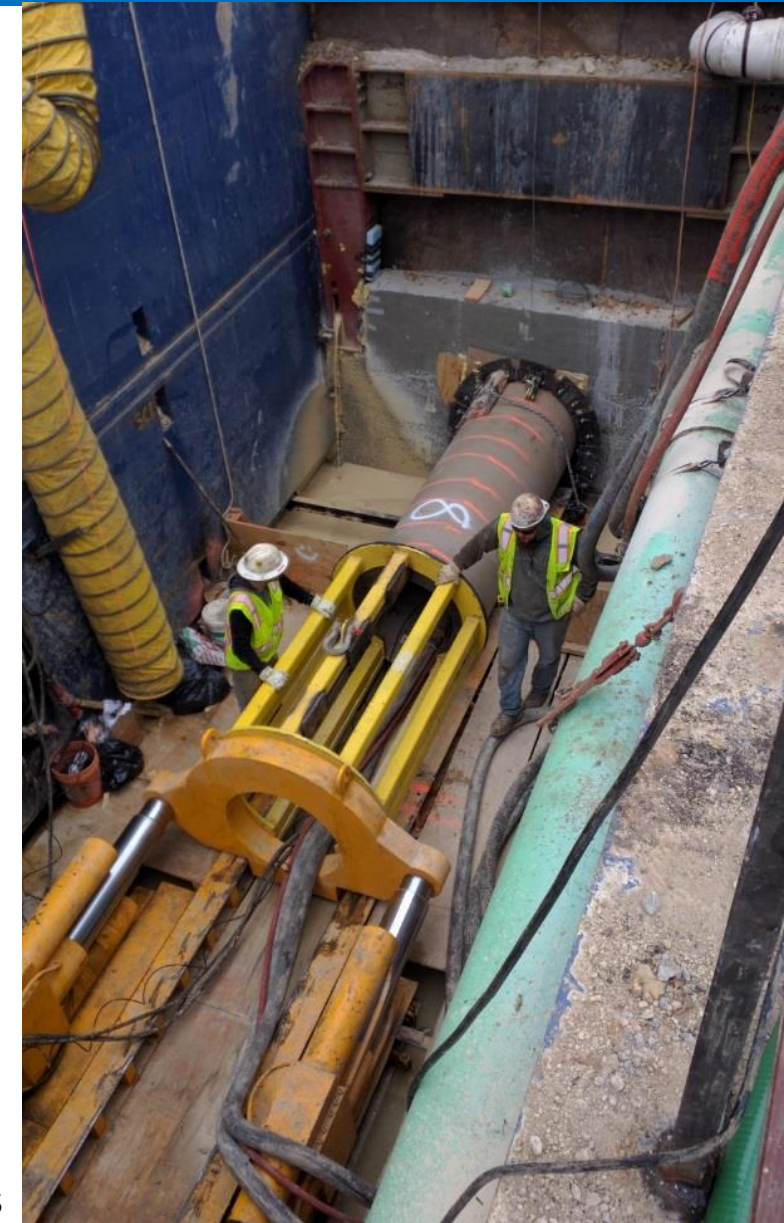


District 1

2026-2030 CIP Projects*

Project Name	Total (\$ in millions)
2022 Inflow Reduction Package 2A	\$12.4
2022 Inflow Reduction Package 2B	\$9.2
Alazan Creek Sewer Main Replacement	\$4.9
Santa Paula Sewer Main Replacement	\$5.4
Total	\$31.9



* Does not include system wide projects

District 2

2026-2030 CIP Projects*

Project Name	Total (\$ in millions)
Pump Station Rehab Phase 27 – East Houston Booster Station (Recycle)	\$10.4
Artesia Ground Storage Tank No. 2	\$2.1
Seale Pump Station Improvements (Phase 12)	\$2.6
Total	\$15.1

* Does not include system wide projects



District 3

2026-2030 CIP Projects*

Project Name	Total (\$ in millions)
Acequia Lift Station Rehabilitation	\$12.1
Pump Station Rehabilitation Phase 27 – East Houston Booster Station (Recycle)	\$10.4
Riverside Golf Course Pump Station Rehab	\$3.4
Salado Creek Sewer Main Replacement	\$66.6
Leon Creek WRC to SMC WRC Recycled Water Interconnect	\$37.7
Salado Creek WRC Flow Management Upgrades	\$31.4
El Camino Recycled Water Pump Station	\$2.1
Mitchell Lake Constructed Wetlands and Dam Spillway Modifications	\$66.6
Mission Del Lago Elevated Storage Tank	\$2.9
C-67 Central Stem Reroute and Replacement - South-North	\$200.9
Total	\$434.1

* Does not include system wide projects



District 4

2026-2030 CIP Projects*

Project Name	Total (\$ in millions)
2023 Sewer Main Replacement Project 2	\$33.0
Pump Station Rehabilitation Phase 28 – Old Pearsall Booster Station (Recycled)	\$10.4
Leon Creek WRC Electrical System Improvements Phase 2	\$37.7
Medio Creek WRC Rehabilitation Improvements Phase 1	\$46.0
SW Loop 410 24-inch WL	\$0.8
Medio Creek WRC Hydraulic Capacity and Space Management Improvements	\$3.3
Medio Creek WRC Process Capacity Improvements (Package A)	\$2.4
Pump Station Rehabilitation Phase 26 – Golden Booster Station	\$2.6
Total	\$136.2

* Does not include system wide projects

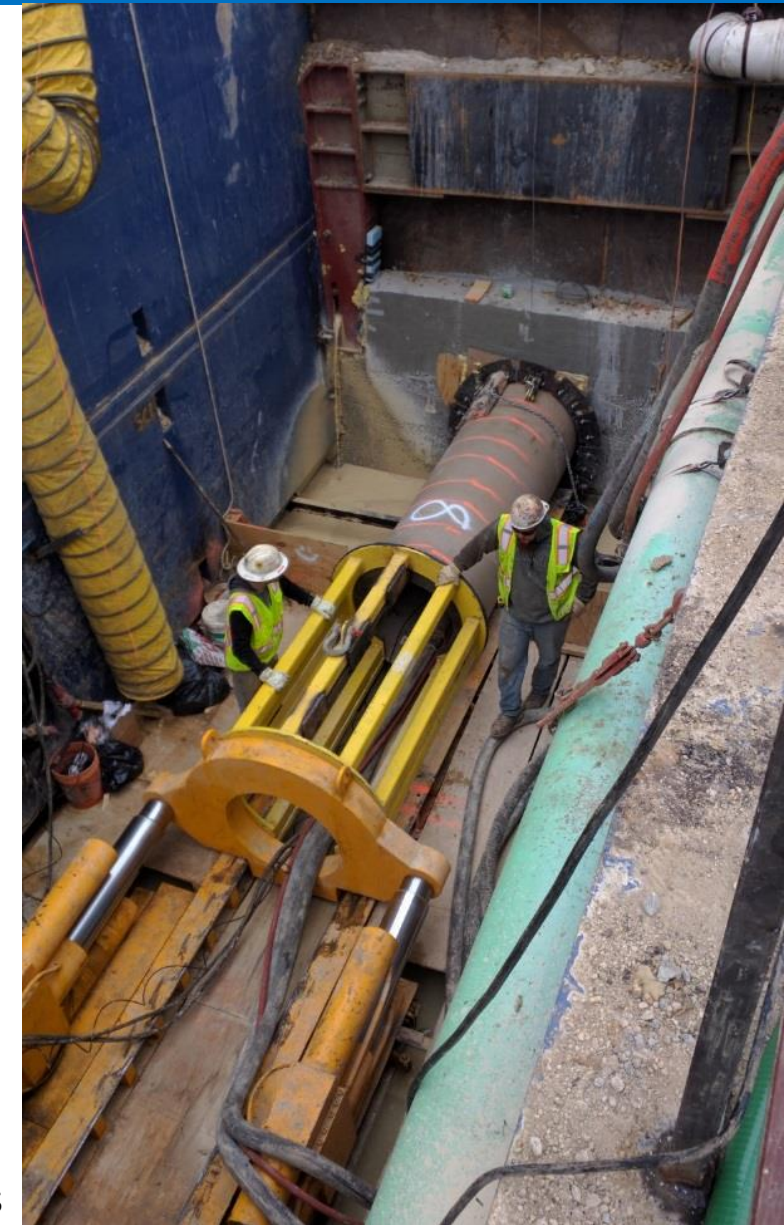


District 5

2026-2030 CIP Projects*

Project Name	Total (\$ in millions)
2022 Inflow Reduction Package 2A	\$12.4
2022 Inflow Reduction Package 2B	\$9.2
Alazan Creek Sewer Main Replacement	\$4.9
C5/C28 Future Extension through Our Lady of the Lake	\$4.7
Patton Elevated Storage Tank	\$22.4
Patton Elevated Storage Tank (EST) Transmission Main	\$2.1
C-67 Central Stem Reroute and Replacement - South- North	\$200.9
21st Street Pump Station Improvements	\$4.4
Fleet Garage Expansion	\$2.6
Mission Road Expansion	\$3.9
Total	\$267.5

* Does not include system wide projects



District 6

2026-2030 CIP Projects*

Project Name	Total (\$ in millions)
Pinn Road Pump Station Electrical System (Recycled)	\$6.5
48-inch Water Main - Micron to Anderson Tank Phase II	\$1.5
Total	\$8.0



* Does not include system wide projects

District 7

2026-2030 CIP Projects*

Project Name	Total (\$ in millions)
2022 Inflow Reduction Package 2A	\$12.4
2022 Inflow Reduction Package 2B	\$9.2
Ligustrum Sewer Main Replacement	\$2.2
Bandera Road 24-inch Water Main	\$1.2
Total	\$25.0



* Does not include system wide projects

District 8

2026-2030 CIP Projects*

Project Name	Total (\$ in millions)
Walden Heights Booster Station Rehab Project	\$4.2
IH-10 42-inch Water Line	\$19.0
Hills Pump Station Altitude	\$0.4
Pump Station Rehabilitation Phase 16 & 17 – Medical Booster Station & Lackland City #3	\$0.7
Total	\$24.3

* Does not include system wide projects



District 9

2026-2030 CIP Projects*

Project Name	Total (\$ in millions)
Inwood Pump Station and Tank Improvements	\$17.2
Agua Vista Dewatering	\$13.1
E-20 Wurzbach Parkway: Jones Maltsberger to Nacogdoches	\$74.2
Pressure Zone 1295/1400E Facility	\$49.8
Pressure Zone 1295/1400E Facility Water Main	\$12.5
Marshall Tank Replacement	\$0.7
Total	\$167.5

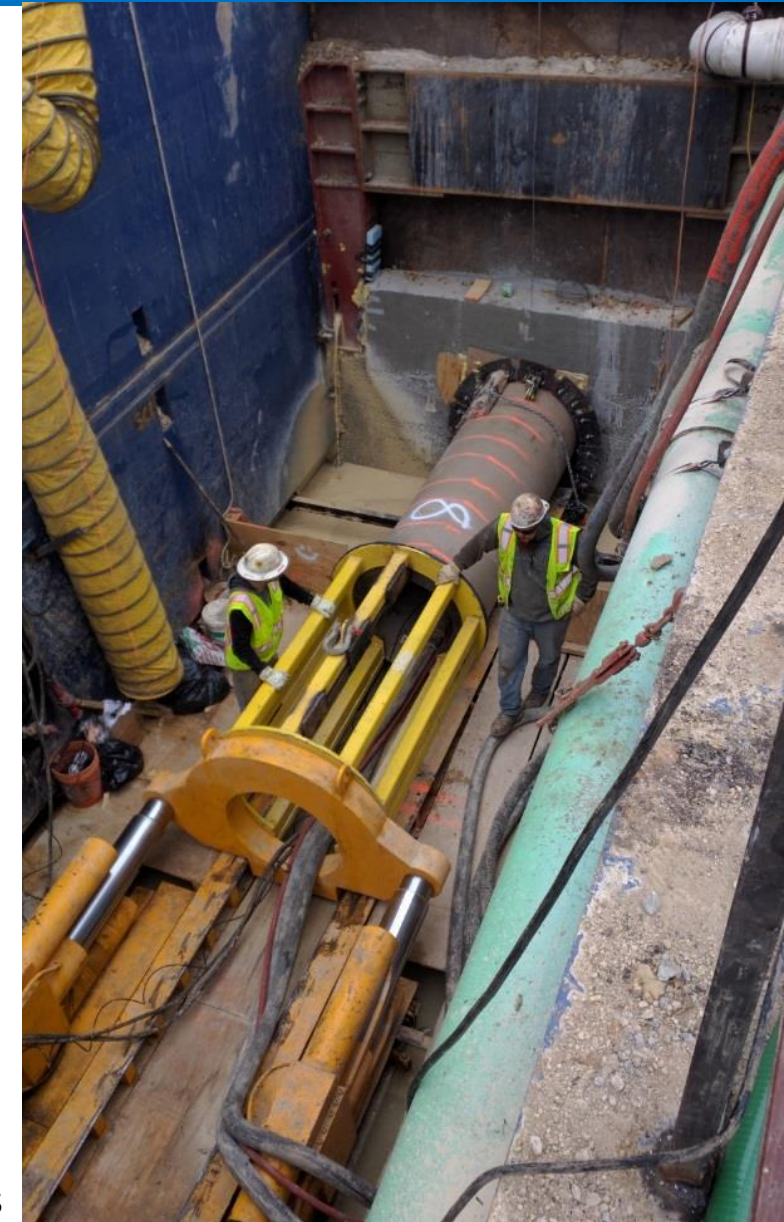
* Does not include system wide projects



District 10

2026-2030 CIP Projects*

Project Name	Total (\$ in millions)
Cibolo Canyon Lift Station Elimination and Relief Line (E-54 Phase 2)	\$37.5
Redland Road - New Water Transmission Main	\$11.1
E-20 Wurzbach Parkway: Jones Maltsberger to Nacogdoches	\$74.2
Total	\$122.8



* Does not include system wide projects

Outside City Limits

2026-2030 CIP Projects*

Project Name	Total (\$ in millions)
Cibolo Canyon Lift Station Elimination and Relief Line (E-54 Phase 2)	\$37.5
Brackish Groundwater Desalination Injection Well No. 3 Drilling	\$14.8
West Grosenbacher Road Pressure Reducing Valve	\$1.4
Aquifer Storage and Recovery Plant Expansion	\$158.7
Desalination Injection Well #3 - Fitout	\$9.5
Pump Station Rehabilitation Phase 32 – Lemonwood	\$10.7
Pressure Zone 10B 16-inch WL along FM 1283 from FM 471 to CR 371	\$1.2
SH-16 12-inch Water Line	\$0.6
Total	\$234.4

* Does not include system wide projects



System Wide Projects*

2026-2030 CIP Projects

Project Name	Total (\$ in millions)
Chilled Water Projects*	\$13.7
Acquisition and Legal Services	\$3.1
Dead End Main Elimination	\$7.8
Engineering Work Order Contracts	\$81.3
Governmental Projects	\$333.0
Program Management	\$130.3
Pump Station Generators & Resiliency Measures	\$117.1
Sewer Main Replacement	\$175.9
Water and Sewer Main Oversizing	\$117.7
Water Main Replacement	\$421.9
Total	\$1,398.7

*Provides benefit to entire service area



System Wide Projects

2026-2030 CIP Projects at Steven M. Clouse WRC*

Project Name	Total (\$ in millions)
Biosolids System Upgrades	\$182.9
Rehabilitation Improvements Phase 1	\$89.8
Anaerobic Digestion Facility Expansion (Package A)	\$23.4
Biological Nutrient Removal Upgrades	\$26.0
Flow Management Upgrades	\$29.4
Primary Treatment Expansion (Package B)	\$85.0
Sidestream Phosphate Harvesting	\$68.1
Tertiary Hydraulic and Process Capacity Improvements (Package C)	\$29.1
Enhanced Energy Recovery – Biosolids Improvements Phase	\$4.7
Rehabilitation Improvements Phase 2	\$5.5
Total	\$543.9

* Located in District 3 but provides benefit to entire service area



System Wide Projects

2026-2030 CIP Projects at Leon Creek WRC*

Project Name	Total (\$ in millions)
Aeration Process Expansion and Improvements (Package B)	\$8.0
Primary Process Capacity and Hydraulic Improvements (Package C)	\$4.7
Total	\$12.7

* Located in District 3 but provides benefit to entire service area

