

SAWS Oak Park Northwood Water Main Replacement Project

CO-00903 – Job # 24-4010

Oak Park Northwood Neighbor Association
Public Meeting

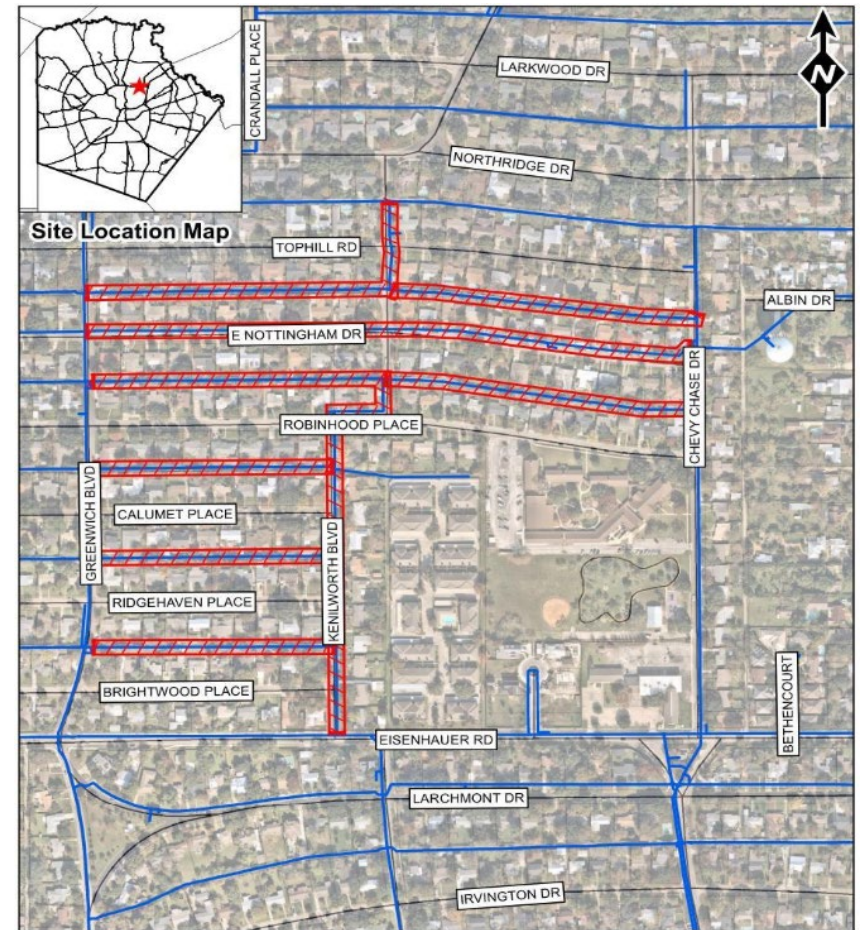
Lee Bausinger P.E.
Project Engineer, SAWS

Tyler Mohre, P.E.
Project Manager, LAN



Project Purpose

- Replace deteriorating water mains that have a history of multiple failures and have a high probability of failure in the future.
- By completing this project, the area will have a significant improvement in the level of service regarding main breaks and prevent the disruption of service to customers.



Project Scope

- Replacement of 8 new water main segments (**Approx. 10,200 LF**) using open cut trench and pipe-burst method.
- Open Cut: Approx. 9,400 feet of 8-inch to 24-inch water lines.
- Pipe-Burst: Approx. 725 feet of 8-inch water lines.
- Temporary water main proposed to maintain service during construction.
- Replacement of valves, hydrants and services

Note: Construction activities may overlap with **SAWS 2025 WMR PKG 5 Project** near E Nottingham Dr Alley and Greenwich Blvd.



*TO BE COMPLETED BY OTHERS AS PART OF SAWS 2025 WMR PKG 5 (JOB NO. 25-4010)

Project Scope

- Construction to remain within City of San Antonio right-of-way or easements.
- Pavement restoration to be in accordance with City of San Antonio Standards.
 - Majority standard pavement repair
 - Overlay at intersections with water main connections
- Concrete Pavement restoration in Ridgehaven Pl alley.
- Construction Duration – 450 Days



*TO BE COMPLETED BY OTHERS AS PART OF SAWS 2025 WMR PKG 5 (JOB NO. 25-4010)

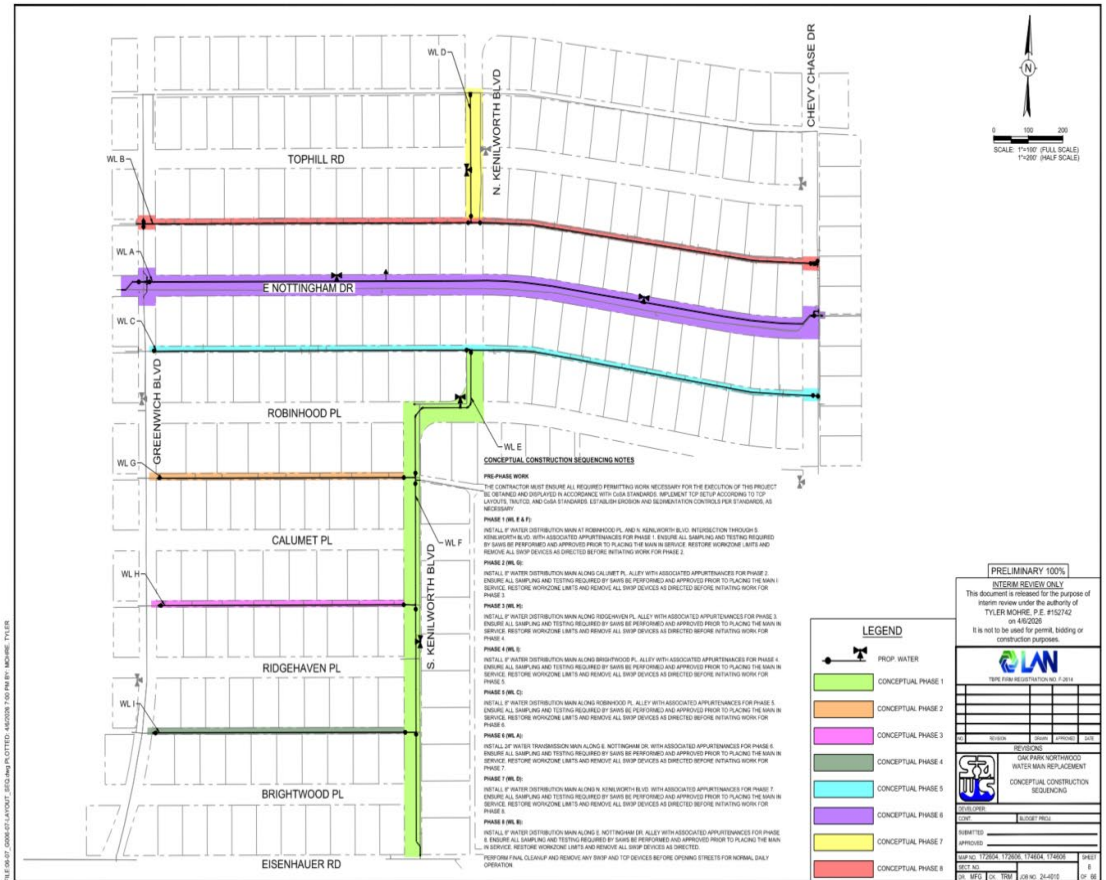
CO-00903 – Oak Park Northwood Water Main Replacement



Construction Schedule and Sequencing

- Anticipated Start: January 2027
- Anticipated Completion: May 2028

- Phase 1: S Kenilworth Blvd.
- Phase 2: Calumet Pl Alley
- Phase 3: Ridgehaven Pl Alley
- Phase 4: Brightwood Pl Alley
- Phase 5: Robinhood Pl Alley
- Phase 6: E Nottingham Dr
- Phase 7: N Kenilworth Blvd
- Phase 8: E Nottingham Dr Alley



CO-0903 – Oak Park Northwood Water Main Replacement



NOTE: CONSTRUCTION SEQUENCING: IT IS THE CONTRACTOR'S SOLE RESPONSIBILITY TO SCHEDULE SEQUENCING FOR REMOVAL AND INSTALLATION OF EXISTING AND PROPOSED SAWS UTILITIES IN CONJUNCTION WITH GENERAL PROJECT CONSTRUCTION. SEQUENCE OF CONSTRUCTION ACTIVITIES SHALL BE CONSIDERED IN ORDER TO MINIMIZE THE EXTENT AND DURATION OF DISTURBANCES.

Traffic Control Plan

Construction Phase 1:

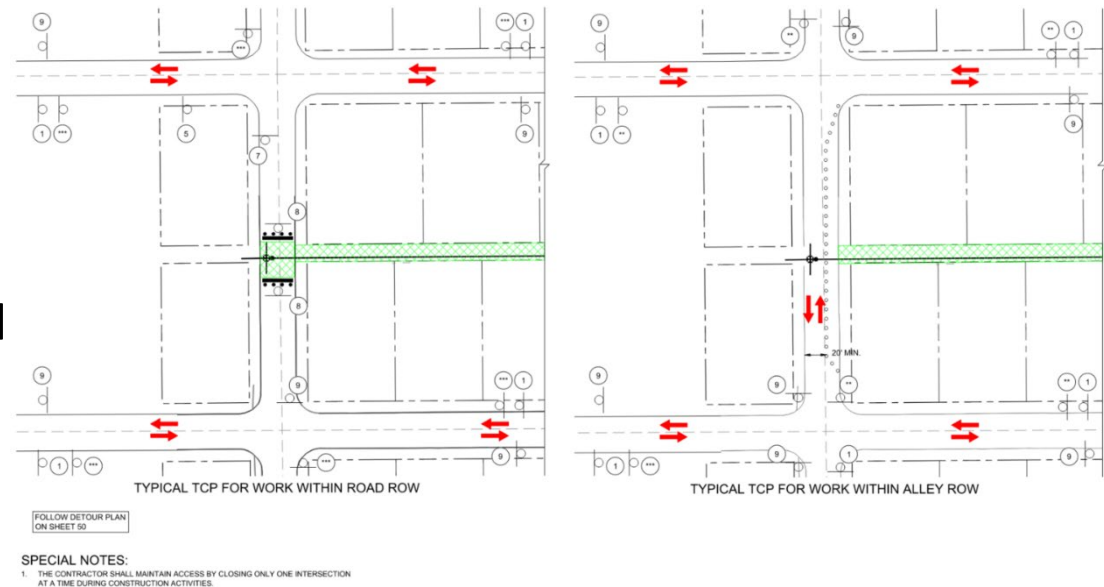
- Kenilworth Blvd and Robinhood Pl will be reduced to one lane, with flaggers.
- Kenilworth Blvd & Robinhood Pl intersection will be closed.
- Kenilworth Blvd will be reduced to one lane, with flaggers.



Traffic Control Plan

Construction Phase 2-5 & 8:

- During water tie-in activities, traffic will be closed at intersection with alley.
- During work in Alleys, typical traffic control will maintain two-way traffic with channeling devices for safety.
- Alley access will not be permitted during construction operations.



Traffic Control Plan

Construction Phase 6: E Nottingham Dr

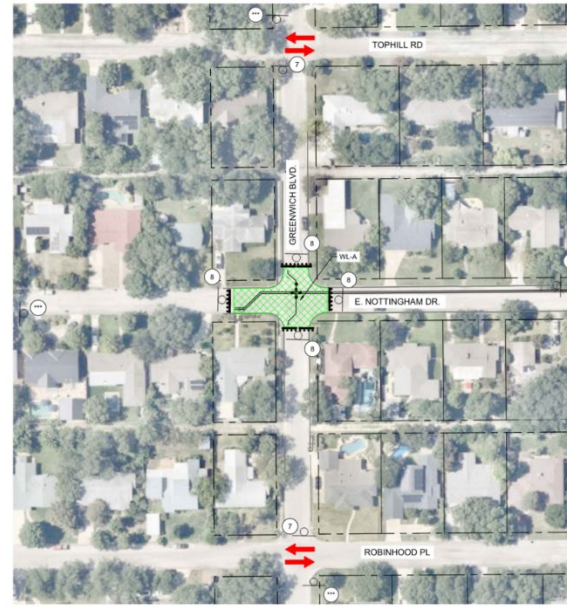
- 24-inch water line installation, E. Nottingham Dr. will be reduced to a single lane, with flaggers directing traffic at intersections.
- Kenilworth Blvd intersection will be closed temporarily for crossing only.



Traffic Control Plan

Construction Phase 6: E Nottingham Dr

- Intersections at Greenwich and Chevy Chase will be temporarily closed to traffic at separate times.
- Work within intersections:
 - Water main installation
 - Tie-ins
 - Pavement restoration
- Only one intersection closed at a time

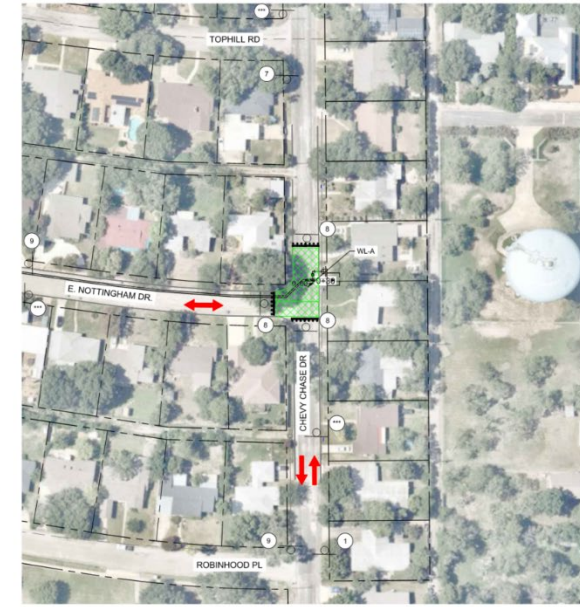


FOLLOW DETOUR PLAN
ON SHEET 51 AND 52

PHASE 1 STEP 2

SPECIAL NOTES:

1. THE CONTRACTOR SHALL MAINTAIN ACCESS BY CLOSING ONLY ONE INTERSECTION AT A TIME DURING CONSTRUCTION ACTIVITIES.



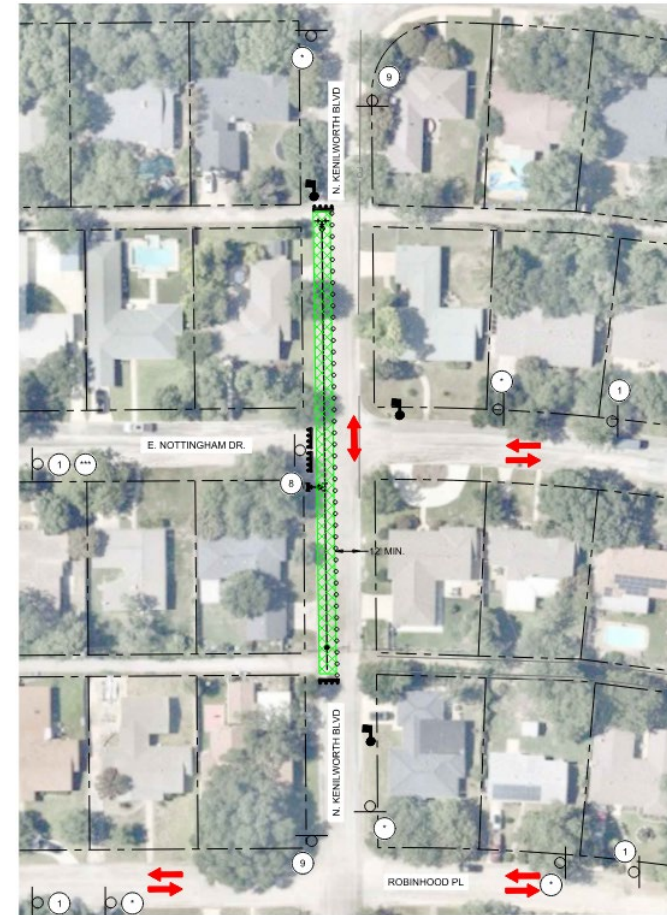
PHASE 1 STEP 3

0 50 100
SCALE: 1"=50' (FULL SCALE)
1"=100' (HALF SCALE)

Traffic Control Plan

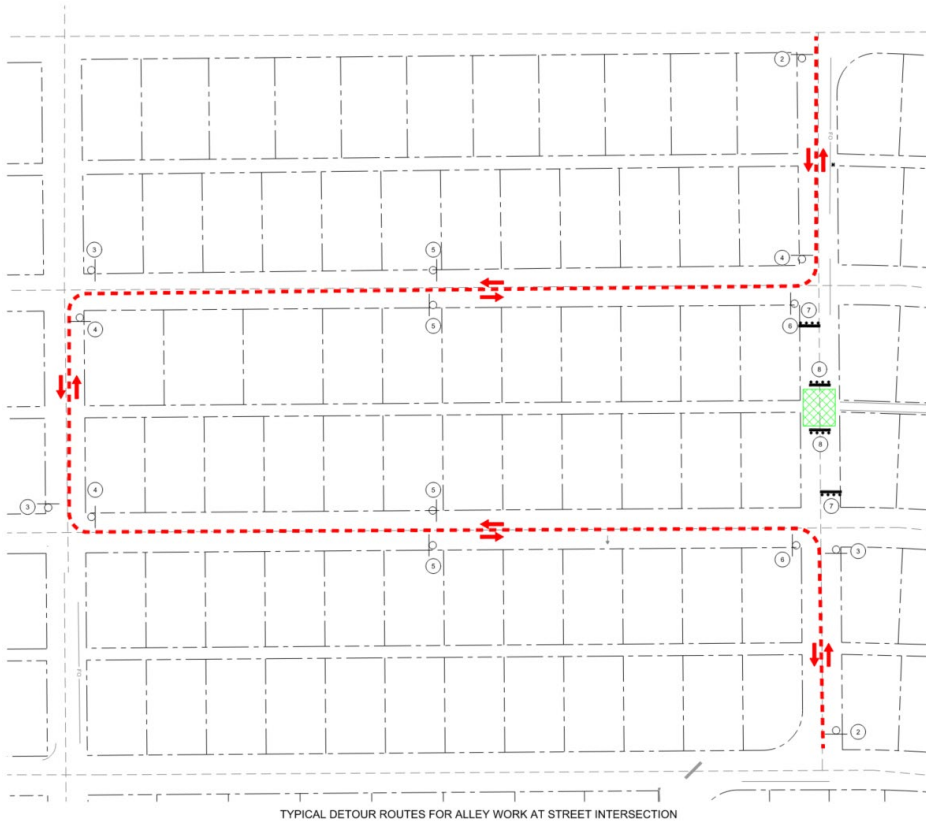
Construction Phase 7: N Kenilworth Blvd

- Kenilworth Blvd will be reduced to one lane, with flaggers directing traffic.
- During this phase, E Nottingham Dr will be closed to crossing traffic temporarily with a detour.



Detours

Work in alleys at street crossings:



Detours for work at intersections:



Project Special Conditions:

- Contractor shall backfill or cover open trenches to allow full traffic access at the end of each workday.
- Construction on adjacent streets may not begin until previous closure has been reopened
- Google Fiber Optic relocations to begin soon and completed before water installation.
- The Contractor will coordinate with CoSA Solid Waste Management to minimize disrupting trash collection.
- Brush and shrub clearing in Robinhood Place Alley.

QUESTIONS?